



| Watermillock | Penrith | CA11 0JN

Guide Price £1,295,000



david britton
ESTATES

Key features

- Three spacious letting bedrooms with en-suite bathrooms
- Warm and inviting decor for guest comfort
- Owner's flat with two/three bedrooms and stylish kitchen
- Large windows provide natural light and tranquility
- Attached two-bedroom holiday let with vaulted ceiling
- South-facing patio with mountain views
- Five-bay oak frame garage for parking and storage
- Ample additional parking available
- 1.5-acre estate with mature gardens and woodland
- Versatile property for holiday let, B&B, or residence

Description

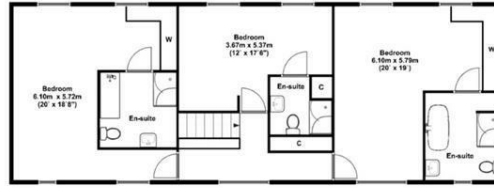
Knotts Mill Country Lodge is an exceptional seven-bedroom, seven-bathroom property, perfectly positioned in the highly desirable Watermillock area. This property offers a rare combination of modern comfort and natural beauty, making it an ideal choice for a hospitality business or a serene countryside retreat (subject to planning).

Directions

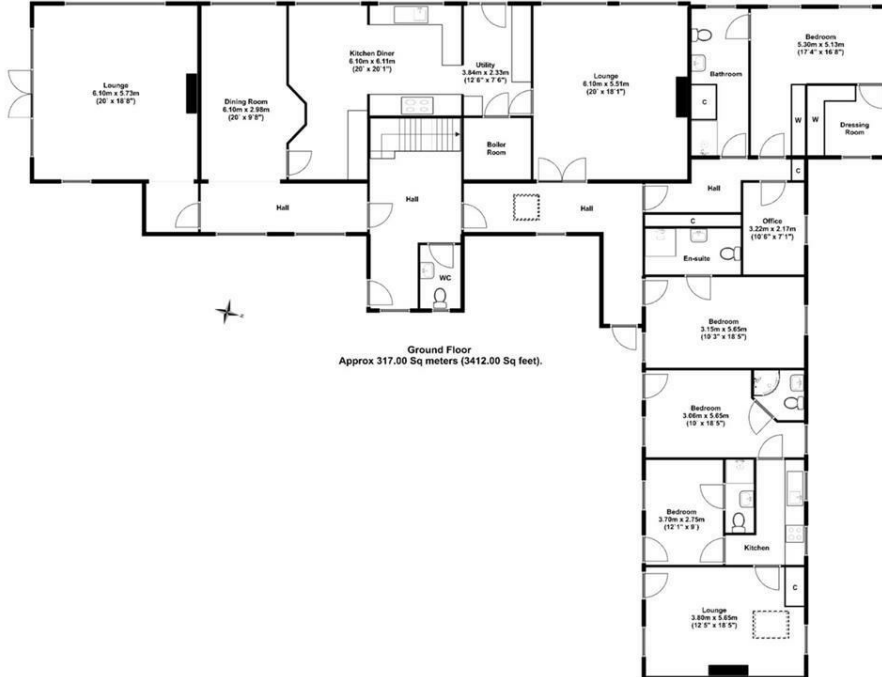




Floor plans



First Floor
Approx 105.00 Sq meters (1130.00 Sq feet).



Ground Floor
Approx 317.00 Sq meters (3412.00 Sq feet).

Energy Efficiency Rating		
	Current	Potential
Very energy efficient - lower running costs		
(92 plus) A		
(81-91) B		
(69-80) C		
(55-68) D	55	60
(39-54) E		
(21-38) F		
(1-20) G		
Not energy efficient - higher running costs		
England & Wales	EU Directive 2002/91/EC	



Unit 3 Mason Court Gillan Way, Penrith 40 Business Park
Penrith
Cumbria
CA11 9GR
01768881111
Sales@brittonestates.co.uk
www.brittonestates.co.uk