



Church Meadow | | Nenthead | CA9 3PZ

£350,000



david britton
ESTATES

Key features

- Detached Bungalow
- Three bedrooms
- Living room
- Kitchen diner
- Sunroom
- Large garden
- Stunning Views
- Village location
- Optional 1.74 acre paddock available by separate negotiation

Description

A gorgeous detached bungalow sitting at the foot of the Pennines in just under half an acre with an optional 1.74 acre paddock available by separate negotiation.

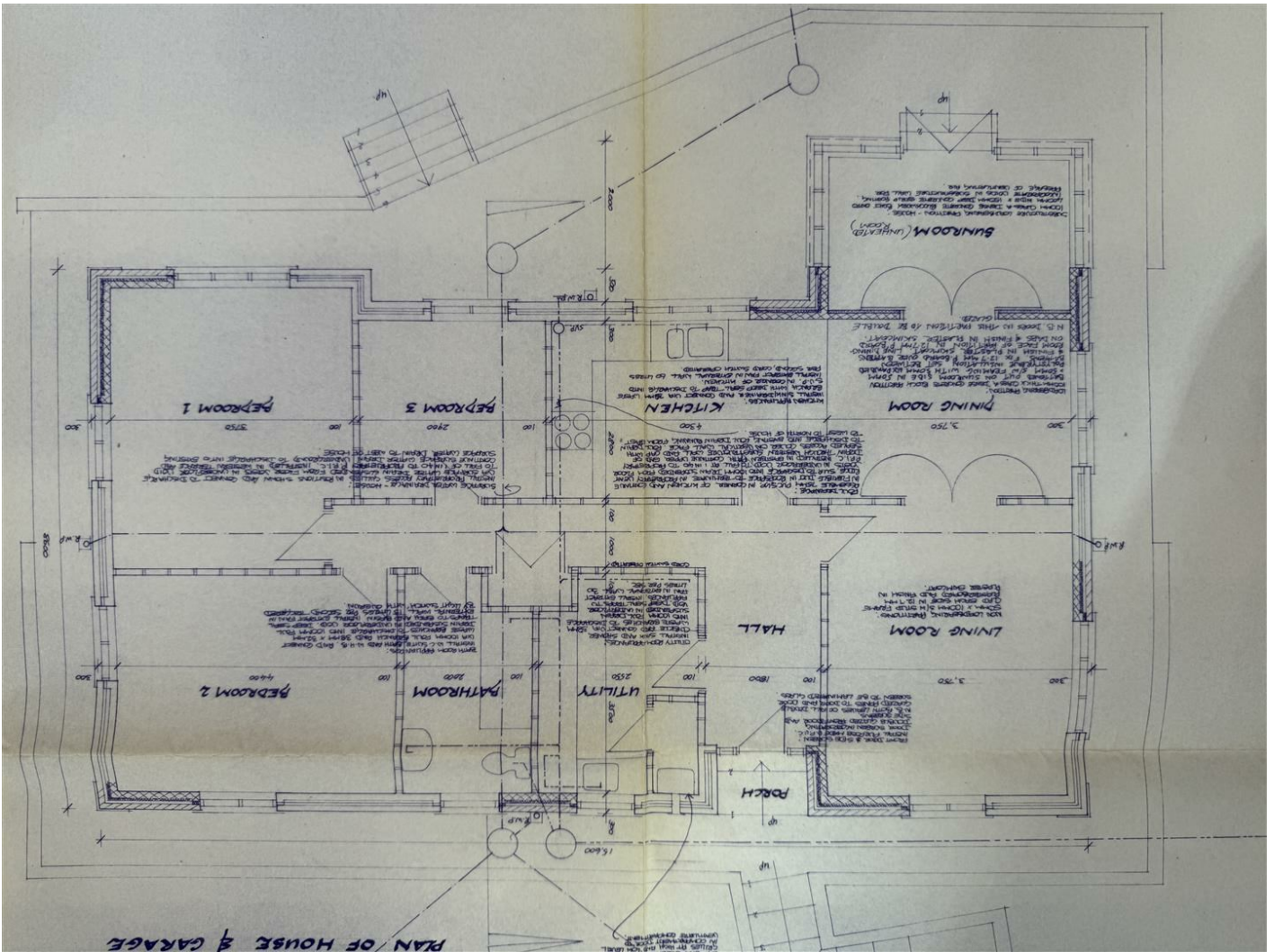


Directions





Floor plans



Energy Efficiency Rating		
	Current	Potential
Very energy efficient - lower running costs		
(92 plus) A		97
(81-91) B		
(69-80) C	68	
(55-68) D		
(39-54) E		
(21-38) F		
(1-20) G		
Not energy efficient - higher running costs		
England & Wales	EU Directive 2002/91/EC	



Unit 3 Mason Court Gillan Way, Penrith 40 Business Park
 Penrith
 Cumbria
 CA11 9GR
 01768881111
 Sales@brittonstates.co.uk
 www.brittonstates.co.uk