



Church Meadow | | Nenthead | CA9 3PZ

£350,000



**david britton**  
ESTATES

## Key features

- Detached Bungalow
- Three bedrooms
- Living room
- Kitchen diner
- Sunroom
- Large garden
- Stunning Views
- Village location
- Optional 1.74 acre paddock available by separate negotiation

## Description

A gorgeous detached bungalow sitting at the foot of the Pennines in just under half an acre with an optional 1.74 acre paddock available by separate negotiation.

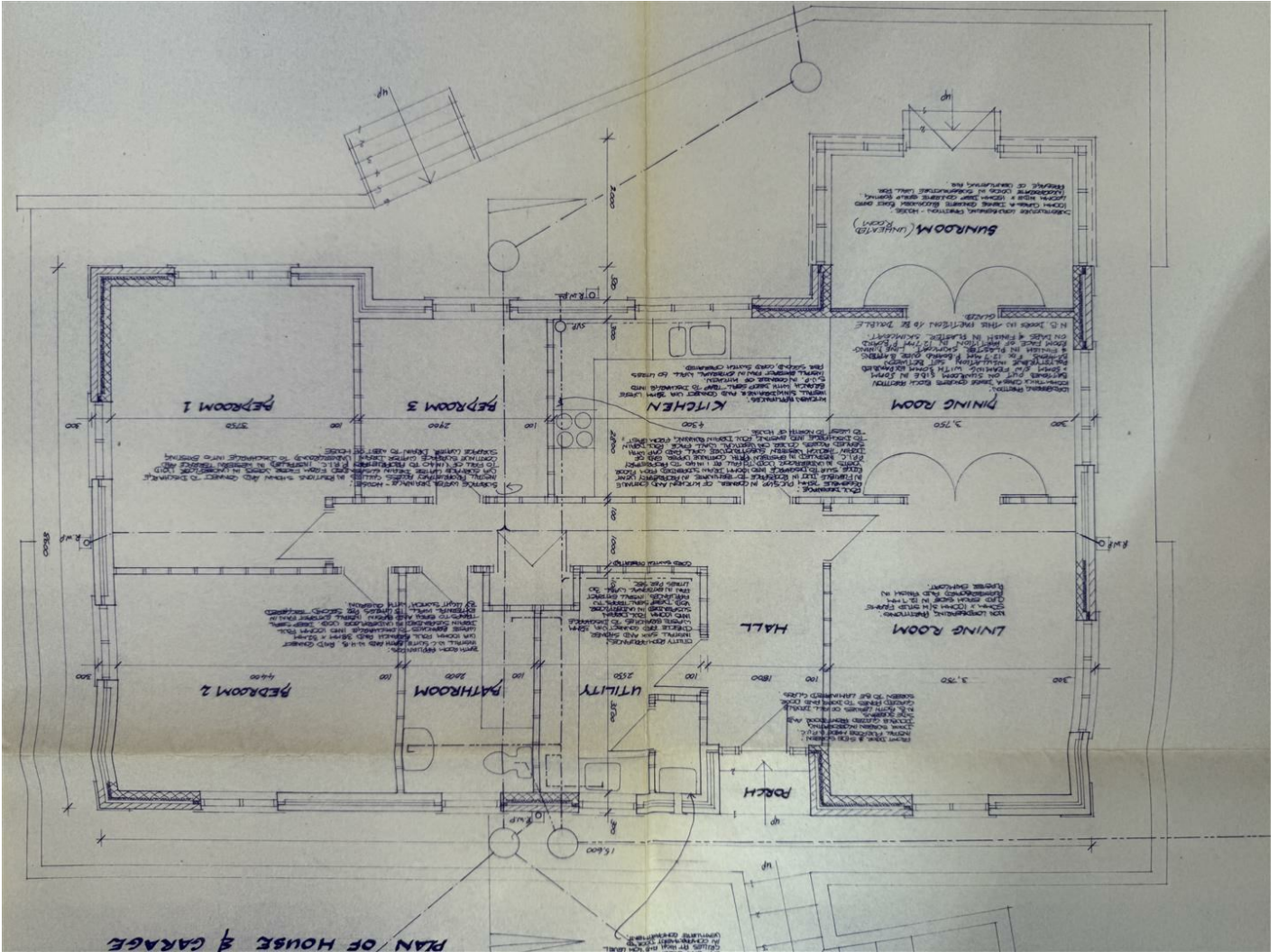


## Directions





# Floor plans



Energy Efficiency Rating		
	Current	Potential
Very energy efficient - lower running costs		
(92 plus) <b>A</b>		<b>97</b>
(81-91) <b>B</b>		
(69-80) <b>C</b>	<b>68</b>	
(55-68) <b>D</b>		
(39-54) <b>E</b>		
(21-38) <b>F</b>		
(1-20) <b>G</b>		
Not energy efficient - higher running costs		
<b>England &amp; Wales</b>	EU Directive 2002/91/EC	



Unit 3 Mason Court Gillan Way, Penrith 40 Business Park  
 Penrith  
 Cumbria  
 CA11 9GR  
 01768881111  
 Sales@brittonstates.co.uk  
 www.brittonstates.co.uk