



| Oughterby | Carlisle | CA5 6JH

Guide Price £399,000



**david britton**  
ESTATES



## Key features

- Spacious 4 bedroom detached home
- Large, private plot
- Views to the Solway Coast
- Two reception rooms
- Kitchen diner with Boot room and Utility
- Four double bedrooms, all with fitted wardrobes
- Bathroom and ensuite shower room
- Integral garage
- Shed/workshop to the rear
- Ample parking for a large number of vehicles

## Description

Enjoying wonderful views across to the Solway Coast, this spacious 4 bedroom detached home sits in a large plot with ample gated parking and a garage!



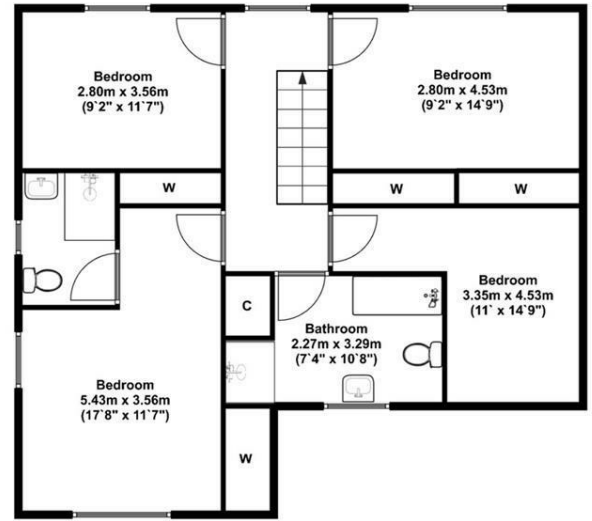
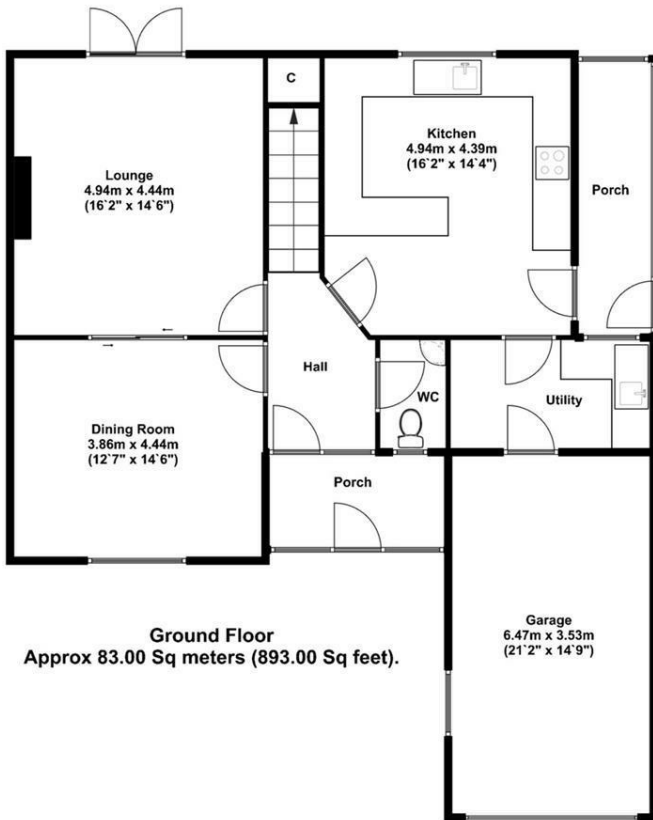
## Directions







# Floor plans



Energy Efficiency Rating		
	Current	Potential
Very energy efficient - lower running costs		
(92 plus) <b>A</b>		
(81-91) <b>B</b>		
(69-80) <b>C</b>		
(55-68) <b>D</b>	60	75
(39-54) <b>E</b>		
(21-38) <b>F</b>		
(1-20) <b>G</b>		
Not energy efficient - higher running costs		
<b>England &amp; Wales</b>	EU Directive 2002/91/EC	



Unit 3 Mason Court Gillan Way, Penrith 40 Business Park  
 Penrith  
 Cumbria  
 CA11 9GR  
 01768881111  
 Sales@brittonestates.co.uk  
 www.brittonestates.co.uk