



Pategill Square | | Penrith | CA11 8LB

Guide Price £180,000



**david britton**  
ESTATES

## Key features

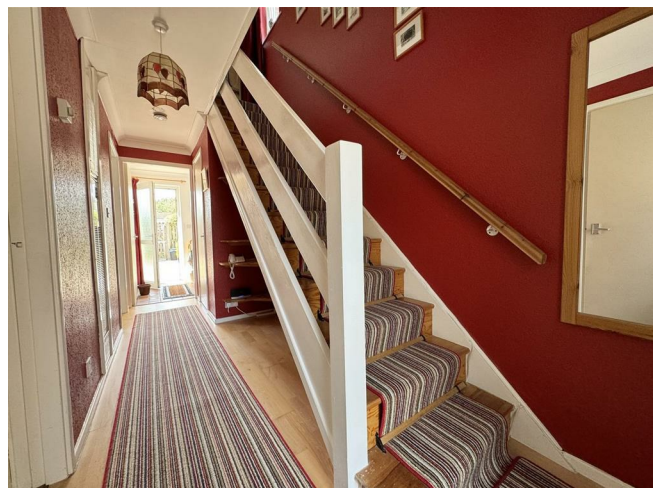
- End terraced house
- Three bedrooms
- Living room
- Kitchen diner
- Bathroom
- Low maintenance garden
- Communal parking
- Pedestrian front square

## Description

A superb modern end terrace home with pedestrian square to the front in the popular Pategill area in Penrith.

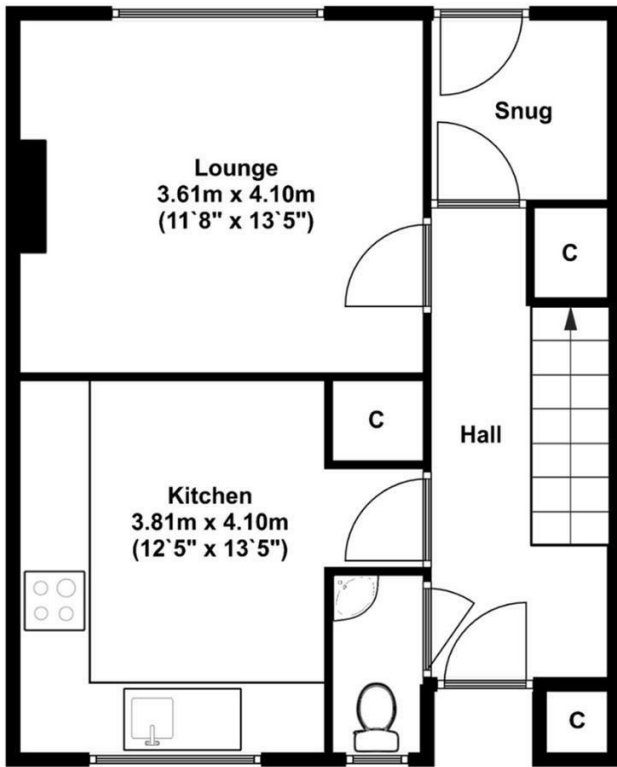


## Directions

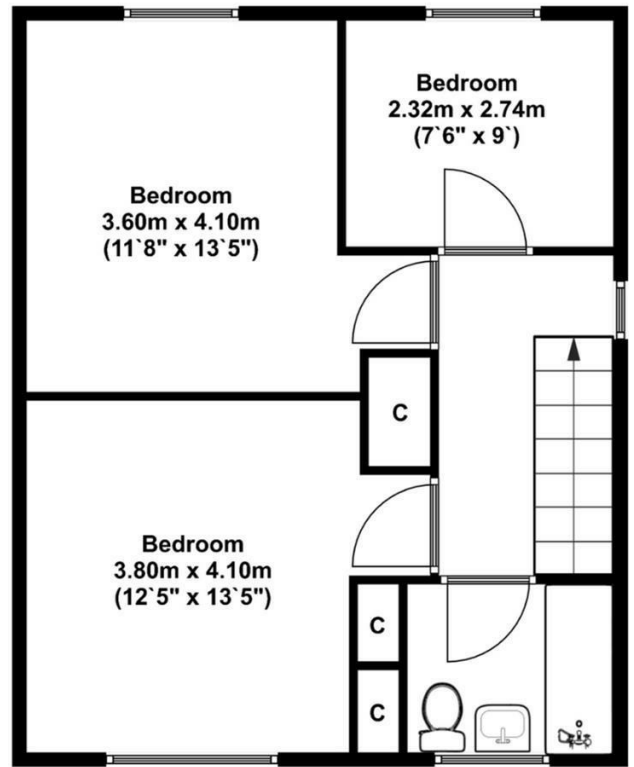




# Floor plans



**Ground Floor**  
Approx 47.00 Sq meters (506.00 Sq feet).



**First Floor**  
Approx 49.00 Sq meters (527.00 Sq feet).

Energy Efficiency Rating		Current	Potential
Very energy efficient - lower running costs			
(92 plus) <b>A</b>			
(81-91) <b>B</b>			<b>83</b>
(69-80) <b>C</b>		<b>67</b>	
(55-68) <b>D</b>			
(39-54) <b>E</b>			
(21-38) <b>F</b>			
(1-20) <b>G</b>			
Not energy efficient - higher running costs			
<b>England &amp; Wales</b>		EU Directive 2002/91/EC	



Unit 3 Mason Court Gillan Way, Penrith 40 Business Park  
 Penrith  
 Cumbria  
 CA11 9GR  
 01768881111  
 Sales@brittonestates.co.uk  
 www.brittonestates.co.uk