



| Soulby | Kirkby Stephen | CA17 4PL

Guide Price £870,000



david britton
ESTATES

Key features

- Stunning Period Home in popular village
- Sitting in around 1 acre plot
- 6 bedrooms arranged over 3 floors
- Immaculately presented throughout
- Retaining original features and character
- Further development potential on second floor STP
- Stone outbuildings, garage and ample parking
- Close to Kirkby Stephen, Appleby
- On the edge of Yorkshire Dales National Park
- Standalone position

Description

ELEVATED 6 BEDROOM VICARAGE WITH AN ACRE OF GROUNDS ON THE EDGE OF DESIRABLE VILLAGE!

This magnificent and imposing period residence is a home filled with grandeur and charming original features, all sitting within a private plot of around 1 acre. Extensively renovated in 2013 and offering around 2700 sq ft of accommodation, this impressive and imposing 6 bedroom family home has a sweeping private driveway and sits in a standalone position on the edge of the desirable village of Soulby and enjoys superb countryside and far reaching fell views towards the Yorkshire Dales National Park.

Directions

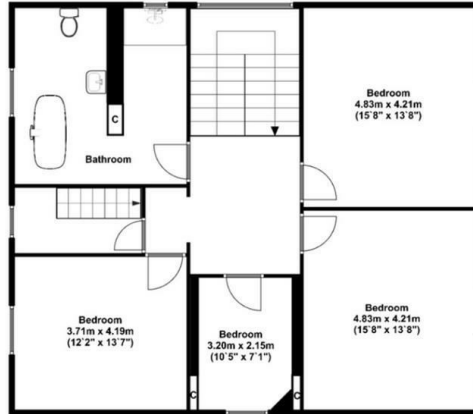




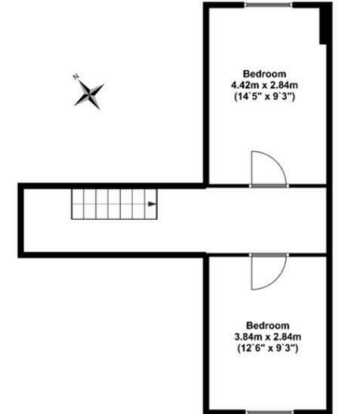
Floor plans



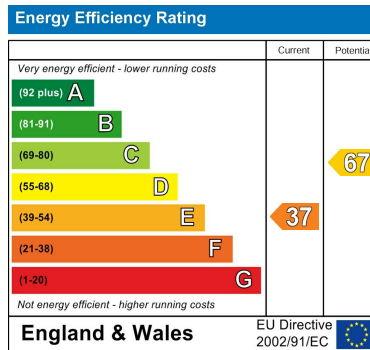
Ground Floor
Approx 129.00 Sq feet (1389.00 Sq feet).



First Floor
Approx 118.00 Sq meters (1270.00 Sq feet).



Second Floor
Approx 35.00 Sq meters (377.00 Sq feet).



Unit 3 Mason Court Gillan Way, Penrith 40 Business Park
 Penrith
 Cumbria
 CA11 9GR
 01768881111
 Sales@brittonestates.co.uk
 www.brittonestates.co.uk