



| | Ainstable | CA4 9QN

Price Guide £495,000



david britton
ESTATES

Key features

- Modern detached home
- Eden Valley village setting
- 4 double bedrooms, master with en-suite
- Large living dining room
- Family room / study / fifth bedroom
- Stylish breakfast kitchen
- Large utility
- Integral garage with driveway parking
- Parking for caravan/motorhome
- Attractive gardens, private rural aspect to rear

Description

An imposing detached family home located in the picturesque village of Ainstable in the heart of the beautiful Eden Valley. This property boasts a generous 1,862 sq ft of living space, offering ample room for a growing family with its four/five bedrooms and two bathrooms.

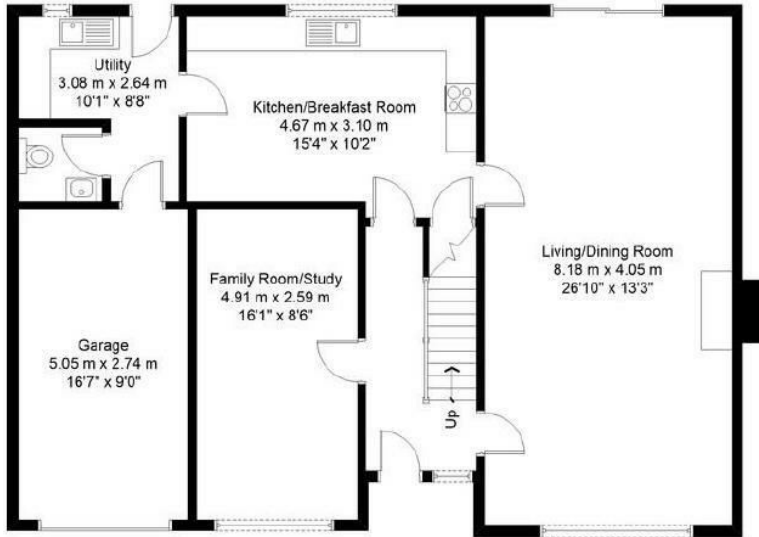


Directions





Floor plans



Ground Floor



First Floor

Energy Efficiency Rating		
	Current	Potential
<i>Very energy efficient - lower running costs</i>		
(92 plus) A		
(81-91) B		
(69-80) C		69
(55-68) D	58	
(39-54) E		
(21-38) F		
(1-20) G		
<i>Not energy efficient - higher running costs</i>		
England & Wales	EU Directive 2002/91/EC	



Unit 3 Mason Court Gillan Way, Penrith 40 Business Park
 Penrith
 Cumbria
 CA11 9GR
 01768881111
 Sales@brittonestates.co.uk
 www.brittonestates.co.uk