



Bruntley Meadows | | Alston | CA9 3UX

Guide Price £255,000



david britton
ESTATES

Key features

- Enjoying elevated open views
- 3 Bedroom detached bungalow
- Large plot
- Dining kitchen
- Lounge with sun room overlooking the fells
- Three bedrooms, one used as a dressing room
- Stylish bathroom
- Large gardens and ample gated parking
- Integral garage
- Close to local amenities in town centre

Description

Found in the popular Bruntley area of Alston, this is a elevated and generous size plot which has a 3 bedroom detached bungalow with integral garage, ample parking and beautiful gardens all enjoying wonderful views across rooftops to the far reaching fells. Internally the property is presented to an immaculate standard, there is a large dining kitchen lounge with adjoining sunroom, 3 bedrooms, 2 double and 1 single and a family bathroom. A doorway leads into the integral garage. The property has recently been redecorated along with new carpets and flooring throughout.

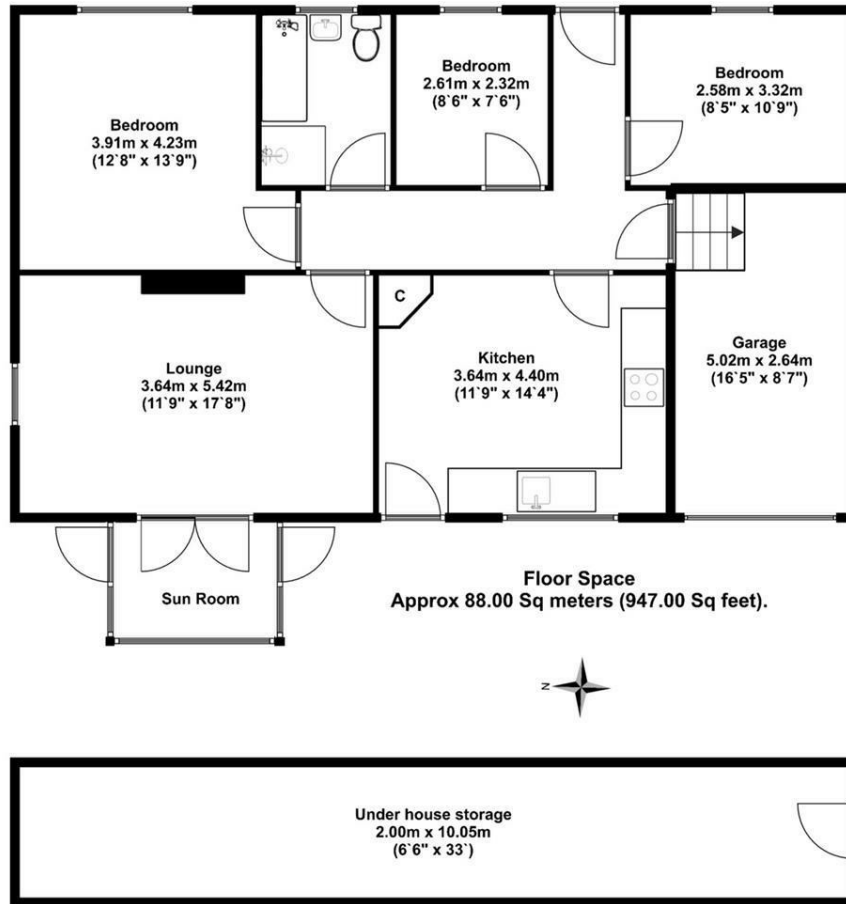
This is a fantastic opportunity to own a bungalow in the desirable market town of Alston which is within walking distance of a whole host of amenities, shops and schools. This home has unique views with it being in an elevated position, the perfect place to enjoy the everchanging countryside surroundings.

Directions





Floor plans



Floor Space
Approx 20.00 Sq meters (215.00 Sq feet).

Energy Efficiency Rating		
	Current	Potential
<i>Very energy efficient - lower running costs</i>		
(92 plus) A		
(81-91) B		82
(69-80) C		
(55-68) D	57	
(39-54) E		
(21-38) F		
(1-20) G		
<i>Not energy efficient - higher running costs</i>		
England & Wales	EU Directive 2002/91/EC	



Unit 3 Mason Court Gillan Way, Penrith 40 Business Park
 Penrith
 Cumbria
 CA11 9GR
 01768881111
 Sales@brittonestates.co.uk
 www.brittonestates.co.uk