



Berrier Road | | Greystoke | CA11 0UB

Guide Price £220,000



david britton
ESTATES

Key features

- Wonderful 2 bedroom cottage
- Lovely gardens to the rear
- Mid-terraced
- Lots of original features
- Lounge/Dining room
- Bathroom on Ground Floor
- Kitchen
- Two bedrooms
- Desirable village location
- Close to Lake District National Park

Description

Found in the popular village of Greystoke, this attractive mid-terrace 2 bedroom cottage is filled with original charm and character. Enjoying a pretty garden to the rear, this is a hidden gem in a desirable location. Internally this is a spacious cottage with a lounge with feature fireplace, dining kitchen and bathroom on the ground floor and two double bedrooms, one with shower room on the first floor. Externally there is also an outhouse with space for white goods and storage. There is a pretty terrace and lawned garden to the rear with two sheds, making this a lovely cottage ideal for a home, rental opportunity or a second home.

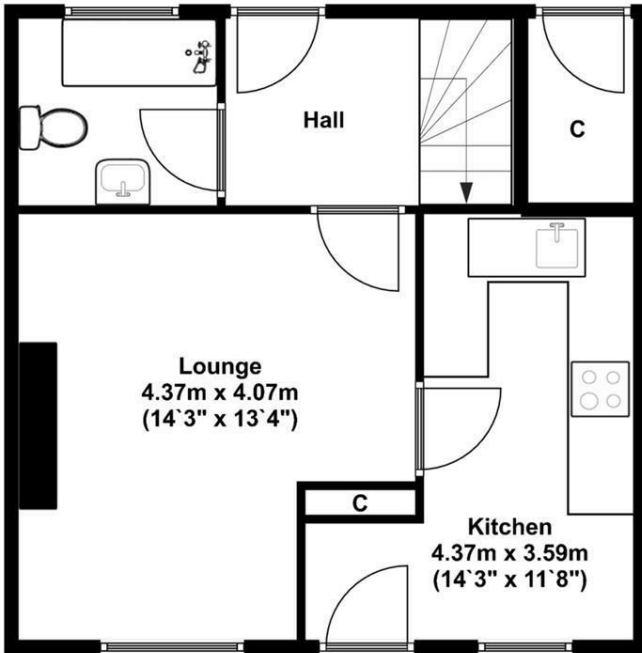
Greystoke is a desirable village close to Penrith and the Lake District National Park with a host of amenities including a popular village pub, swimming pool, shop and local primary school.

Directions

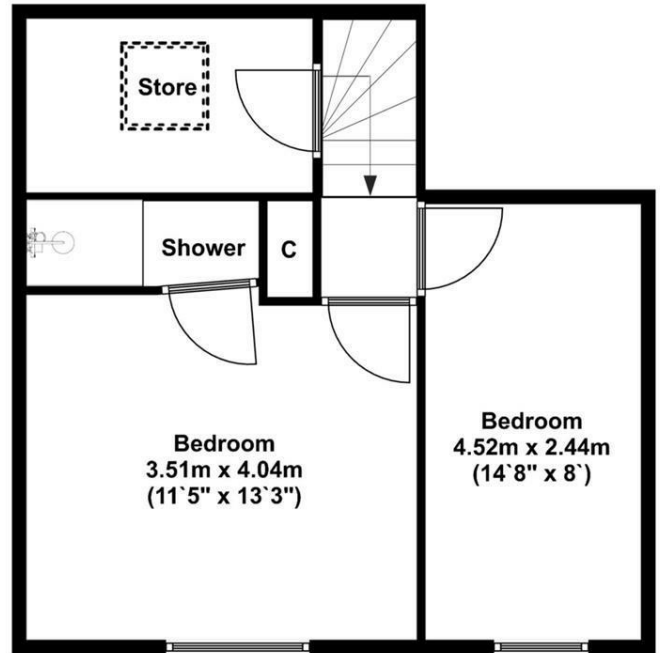




Floor plans



Ground Floor
Approx 39.00 Sq meters (420.00 Sq feet).



First Floor
Approx 39.00 Sq meters (420.00 Sq feet).



Energy Efficiency Rating		Current	Potential
Very energy efficient - lower running costs			
(92 plus) A			
(81-91) B			77
(69-80) C			
(55-68) D		43	
(39-54) E			
(21-38) F			
(1-20) G			
Not energy efficient - higher running costs			
England & Wales		EU Directive 2002/91/EC	



Unit 3 Mason Court Gillan Way, Penrith 40 Business Park
 Penrith
 Cumbria
 CA11 9GR
 01768881111
 Sales@brittonestates.co.uk
 www.brittonestates.co.uk