



Pategill Square | | Penrith | CA11 8LB

Guide Price £180,000



david britton
ESTATES

Key features

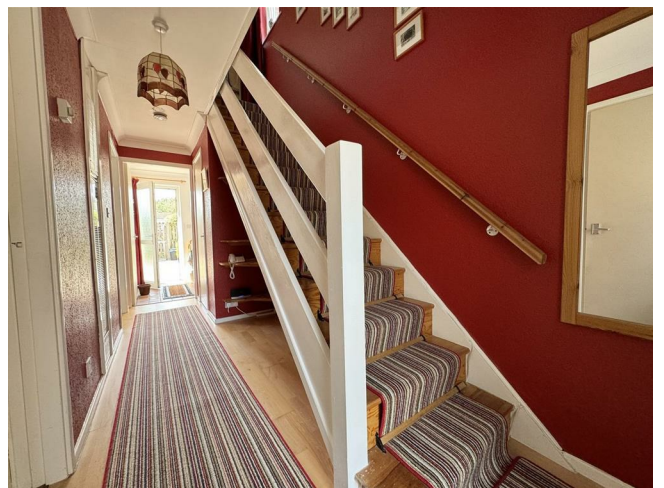
- End terraced house
- Three bedrooms
- Living room
- Kitchen diner
- Bathroom
- Low maintenance garden
- Communal parking
- Pedestrian front square

Description

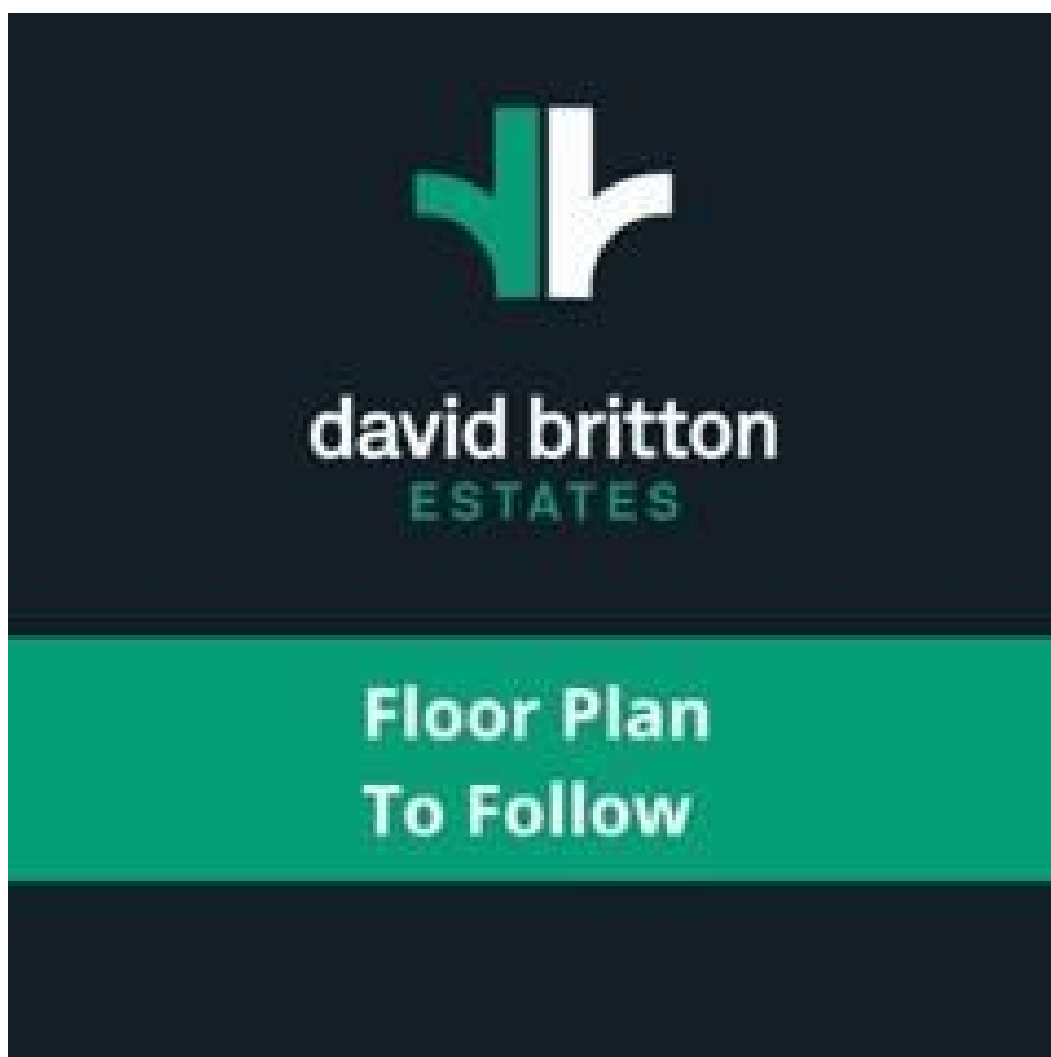
A superb modern end terrace home with pedestrian square to the front in the popular Pategill area in Penrith.



Directions







Energy Efficiency Rating		
	Current	Potential
<i>Very energy efficient - lower running costs</i>		
(92 plus) A		
(81-91) B		
(69-80) C		
(55-68) D		
(39-54) E		
(21-38) F		
(1-20) G		
<i>Not energy efficient - higher running costs</i>		
England & Wales	EU Directive 2002/91/EC	



Unit 3 Mason Court Gillan Way, Penrith 40 Business Park
Penrith
Cumbria
CA11 9GR
01768881111
Sales@brittonestates.co.uk
www.brittonestates.co.uk