



12

Roods Drive | Kirkoswald | Penrith | CA10 1EH

Price Guide £375,000



**david britton**  
ESTATES

## Key features

- Modern extended semi detached house
- Four bedrooms
- Two bathrooms
- Driveway parking for several vehicle's
- Garage
- Gardens
- Village location

## Description

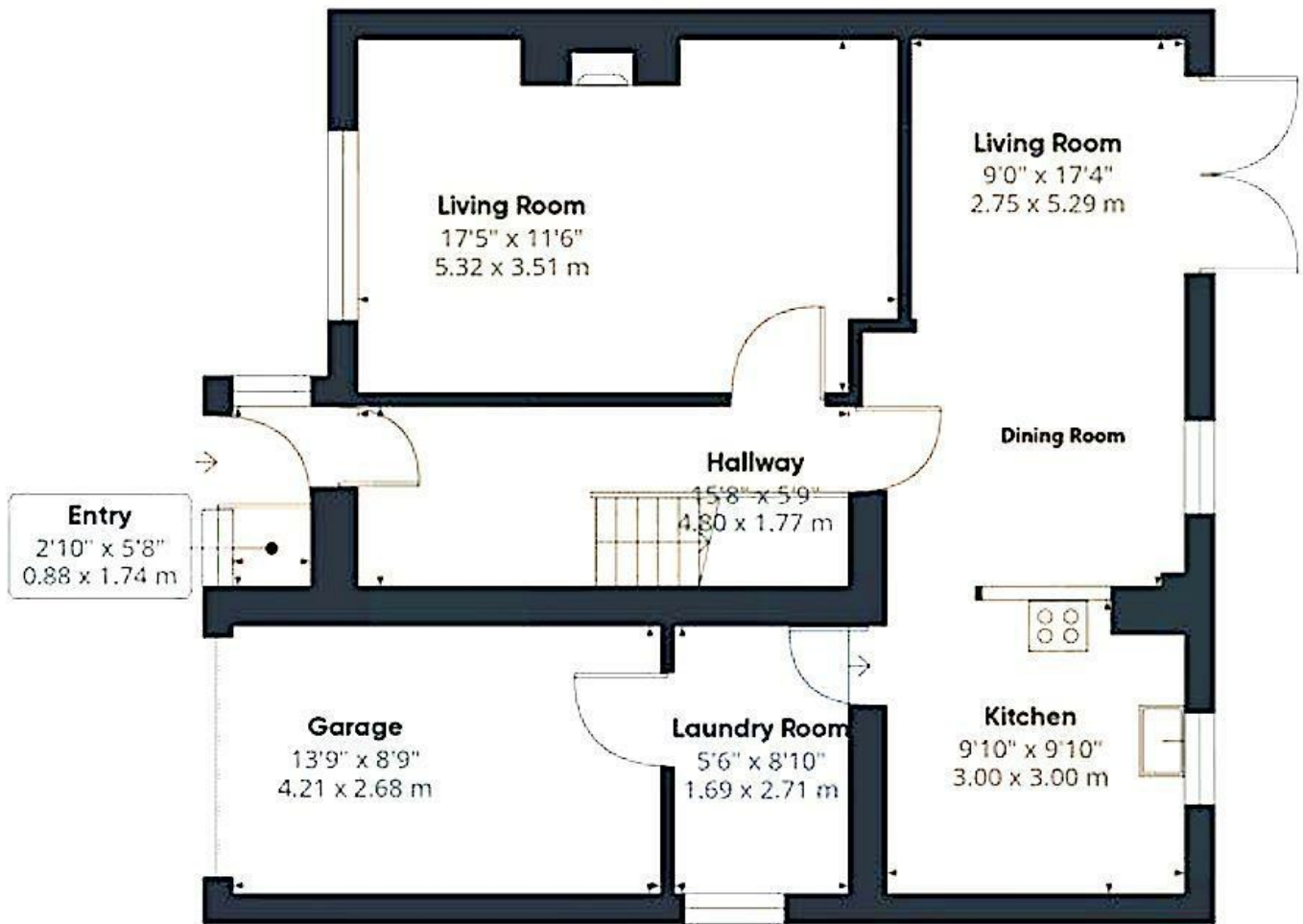
A superb extended semi detached family home in the Wonderful Eden Valley Village of Kirkoswald.



## Directions



## Floor plans



Floor 0

Energy Efficiency Rating		Current	Potential
Very energy efficient - lower running costs			
(92 plus) A			
(81-91) B			81
(69-80) C		66	
(55-68) D			
(39-54) E			
(21-38) F			
(1-20) G			
Not energy efficient - higher running costs			
England & Wales		EU Directive 2002/91/EC	



Unit 3 Mason Court Gillan Way, Penrith 40 Business Park  
 Penrith  
 Cumbria  
 CA11 9GR  
 01768881111  
 Sales@brittonestates.co.uk  
 www.brittonestates.co.uk