



Low Hesket | | Carlisle | CA4 0HE

Price Guide £219,995



david britton
ESTATES

Key features

- Semi detached house
- Three bedrooms
- Living room
- Kitchen
- Rear garden
- Garage and parking to the front
- Village location

Description

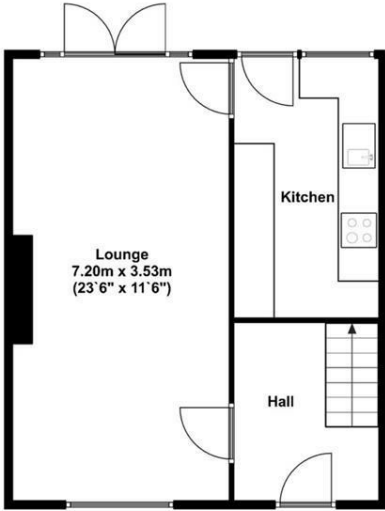
Offered with no onward chain, is this modern three bedroomed semi-detached home, right in the heart of Low Hesket village.

Directions

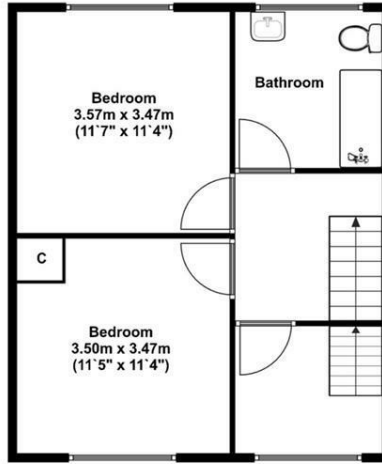




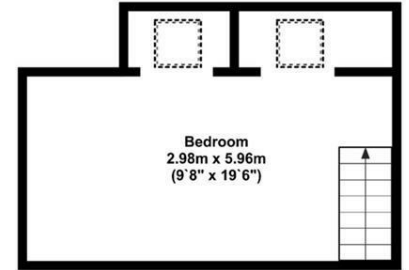
Floor plans



Ground Floor
Approx 43.00 Sq meters (463.00 Sq feet).



First Floor
Approx 43.00 Sq meters (463.00 Sq feet).



Second Floor
Approx 22.00 Sq meters (237.00 Sq feet).



Energy Efficiency Rating		
	Current	Potential
<i>Very energy efficient - lower running costs</i>		
(92 plus) A		
(81-91) B		75
(69-80) C		
(55-68) D	58	
(39-54) E		
(21-38) F		
(1-20) G		
<i>Not energy efficient - higher running costs</i>		
England & Wales	EU Directive 2002/91/EC	



Unit 3 Mason Court Gillan Way, Penrith 40 Business Park
 Penrith
 Cumbria
 CA11 9GR
 01768881111
 Sales@brittonestates.co.uk
 www.brittonestates.co.uk