



Helton | Askham | Penrith | CA10 2QL

Asking Price £1,650,000



david britton
ESTATES

Key features

- Six-bedroom Grade II listed farmhouse near Penrith, blending history with modern comforts
- Rescued in 2005, it offers space and privacy, accessed via a private driveway
- Sandstone-floored entrance hall with underfloor heating and practical amenities
- The former stable is now a stylish kitchen with an Aga and granite worktops
- Enjoy gatherings in the dining room with an original stone fireplace
- Relax in the snug or sitting room with oak flooring and a log-burning stove
- Six spacious bedrooms offer luxurious bathrooms and scenic views
- The master suite includes a lounge, large bathroom, and private sauna
- Outside, multiple patios offer panoramic views and ideal spots for stargazing
- Perfect for outdoor enthusiasts with nearby trails and attractions like Pooley Bridge and Haweswater

Description

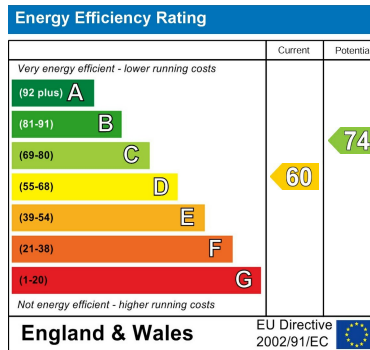
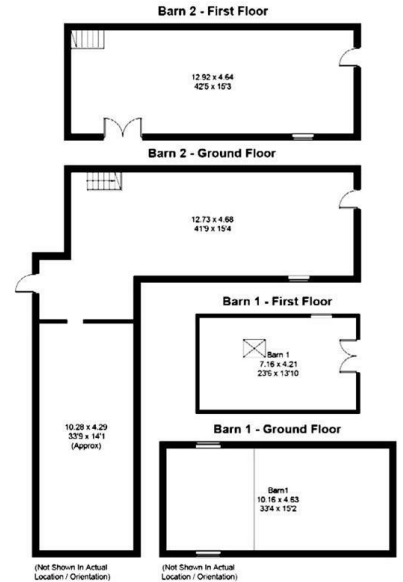
Discover Scalegate, a unique five-bedroom home nestled between Ullswater and Haweswater, south of Askham near Penrith and close to Helton village. This spacious, Grade II listed farmhouse on Helton Fell blends historical charm with modern comfort.

Directions





Floor plans



Unit 3 Mason Court Gillan Way, Penrith 40 Business Park
 Penrith
 Cumbria
 CA11 9GR
 01768881111
 Sales@brittonestates.co.uk
 www.brittonestates.co.uk