



Plot 10

Swallows Rise | Tirril | Penrith | CA10 2JN

Guide Price £495,000



david britton
ESTATES

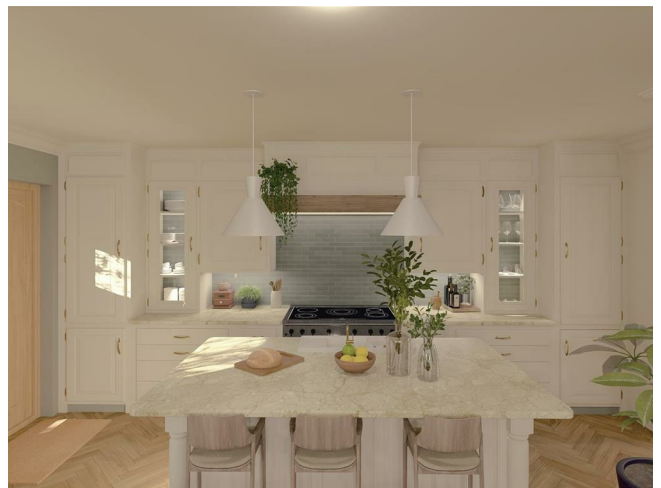
Key features

- Three Bedroom detached bungalow
- Desirable Village Location
- New Build Home
- High Quality Fixtures and Fittings
- Luxurious Specification
- Close to Pooley Bridge & Ullswater Lake
- Off road Parking & Garden
- Integral Garage
- Excellent local community
- Close to Transport Links

Description

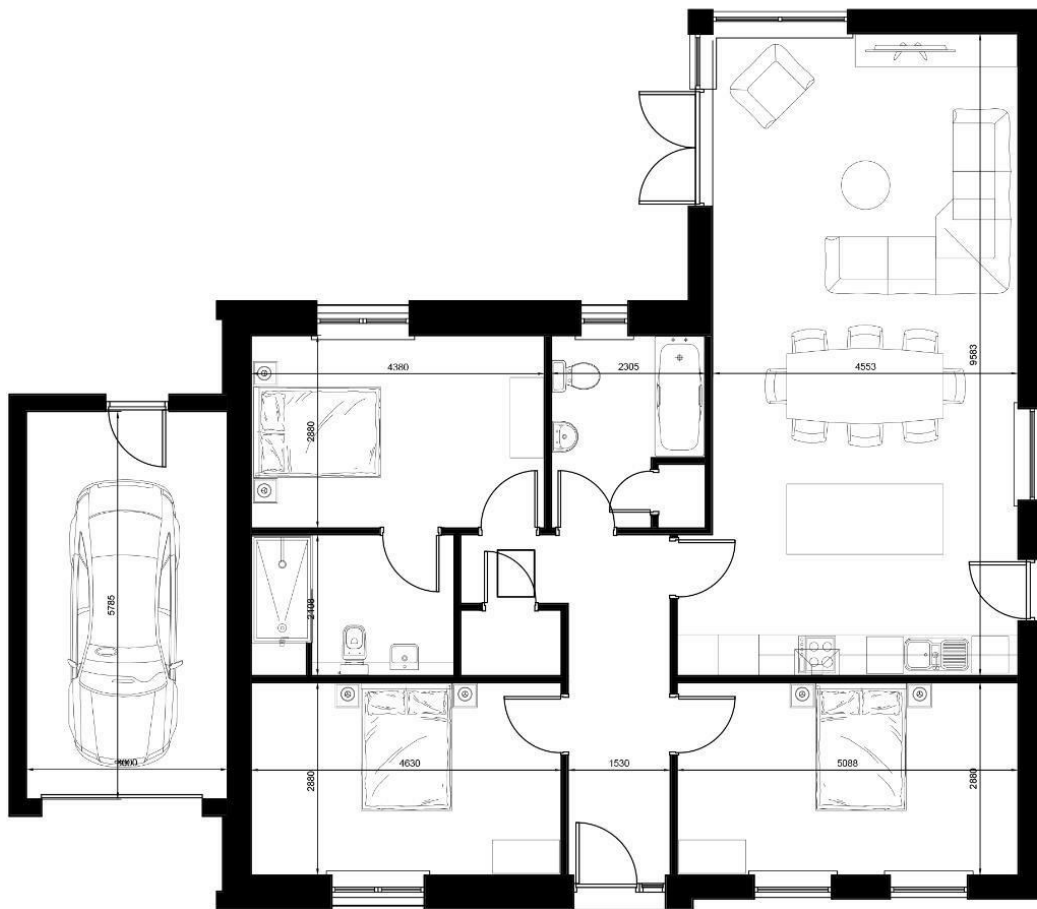
* Plot 10 * Sycamore Cottage is a sophisticated three-bedroom detached bungalow offering around 1205 sq.ft. of accommodation all on one level. Inside, there is an open-plan living, kitchen, and dining area with French doors that open to the rear garden, three generous double bedrooms, including a master bedroom with an ensuite shower room, and a family bathroom. The garden is mainly laid to lawn with a rear terrace that enjoys views towards the fells. The front features off-road parking for two vehicles and access to the garage.

Directions





Floor plans



Unit 3 Mason Court Gillan Way, Penrith 40 Business Park
Penrith
Cumbria
CA11 9GR
01768881111
Sales@brittonestates.co.uk
www.brittonestates.co.uk