



| | Crosby Garrett | CA17 4PR

Price Guide £375,000



**david britton**  
ESTATES



## Key features

- Semi detached cottage
- Three bedrooms
- Living room
- sun room
- Kitchen diner
- Parking for three vehicles
- Galleried rear garden
- Picturesque Village
- Yorkshire Dales National Park

## Description

A truly stunning location in the Yorkshire Dales National Park for this gorgeous three bedroomed, two bathrooms and two reception rooms semi-detached cottage.

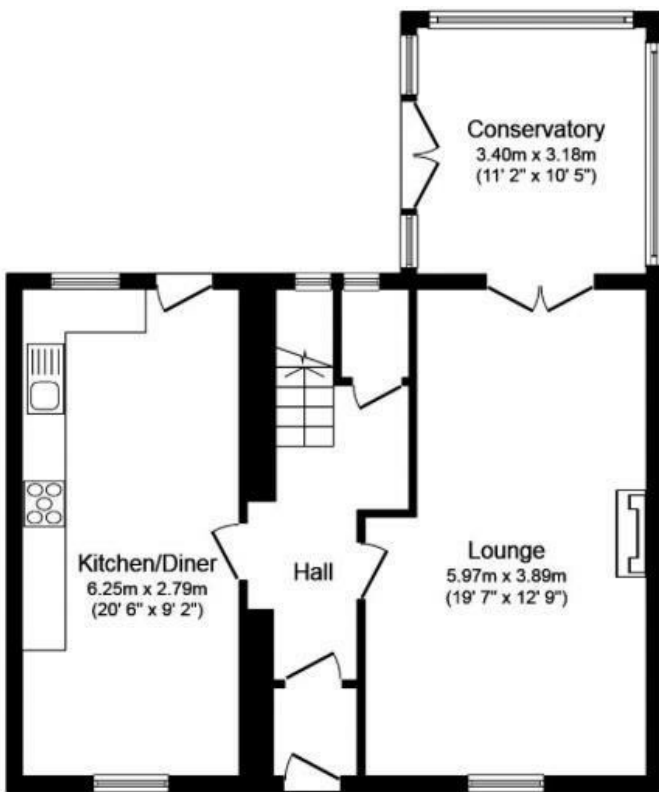
## Directions



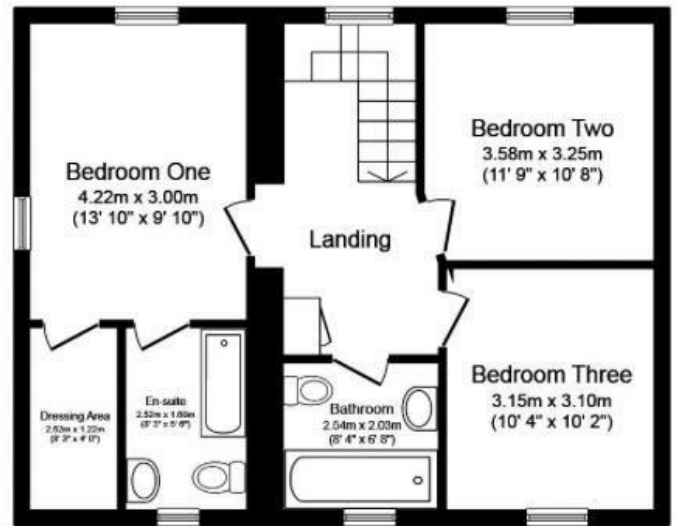




# Floor plans



**Ground Floor**



**First Floor**

Energy Efficiency Rating		
	Current	Potential
Very energy efficient - lower running costs		
(92 plus) <b>A</b>		<b>97</b>
(81-91) <b>B</b>		
(69-80) <b>C</b>		
(55-68) <b>D</b>	<b>64</b>	
(39-54) <b>E</b>		
(21-38) <b>F</b>		
(1-20) <b>G</b>		
Not energy efficient - higher running costs		
<b>England &amp; Wales</b>	EU Directive 2002/91/EC	



Unit 3 Mason Court Gillan Way, Penrith 40 Business Park  
 Penrith  
 Cumbria  
 CA11 9GR  
 01768881111  
 Sales@brittonestates.co.uk  
 www.brittonestates.co.uk