



| Eskdale | Holmrook | CA19 1TL

Guide Price £595,000



david britton
ESTATES

Key features

- Wonderful 4 bedroom Lakeland Cottage
- Detached property
- In enviable position
- Stunning, uninterrupted views
- Fully renovated to a high standard
- Luxurious, locally sourced fittings
- Three outhouses to the rear
- Large private garden
- Close to coast and mountains
- Desirable location in the Lake District National Park

Description

Sitting in an enviable position with uninterrupted views of the Lakeland Fells, Howside is an attractive 4 bedroom detached cottage. Dating back to 1850, this was originally two cottages for the local bobbin mill which has been lovingly restored and updated during the period of the current owners occupancy. Externally the home sits in a large plot with wonderful well stocked gardens and terrace, a range of outbuildings and off-road parking for a 2/3 vehicles. Ideally located in the Lake District National Park and has easy access to local sandy beaches.

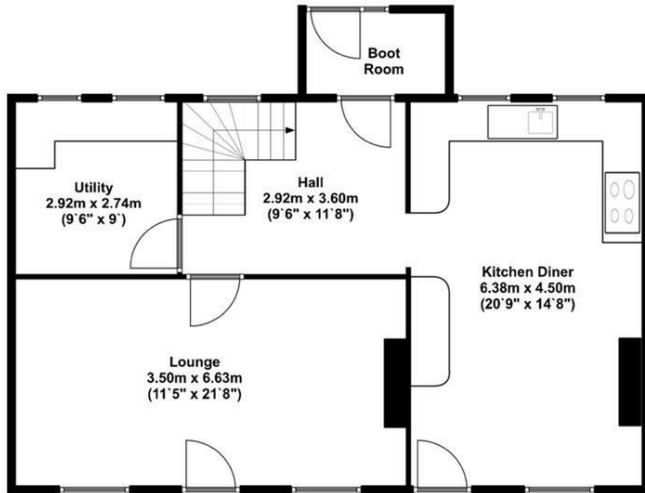
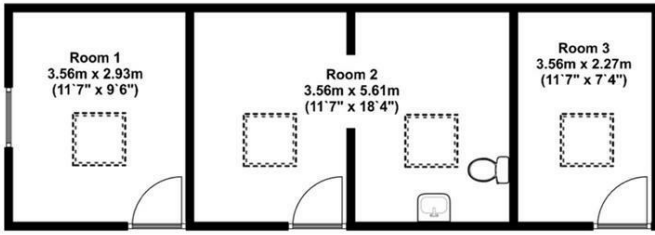
Directions



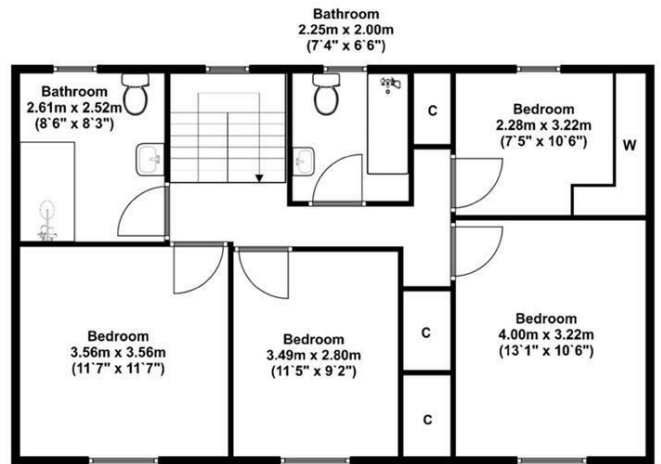


Floor plans

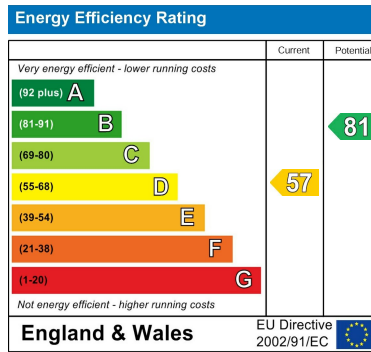
Outbuildings



Ground Floor
Approx 70.00 Sq meters (753.00 Sq feet).



First Floor
Approx 70.00 Sq meters (753.00 Sq feet).



Unit 3 Mason Court Gillan Way, Penrith 40 Business Park
 Penrith
 Cumbria
 CA11 9GR
 01768881111
 Sales@brittonestates.co.uk
 www.brittonestates.co.uk