



Ancroft Southmoor Farm | | Berwick-Upon-Tweed | TD15 2TD

Guide Price £1,350,000



**david britton**  
ESTATES

## Key features

- Incredible lifestyle opportunity with around 6 acres
- Stunning detached home with abundance of character
- Two bedroom bungalow with views to the coast
- Two bedroom Dairy Cottage
- One bedroom Bothy Cottage
- 9400 sq.ft Steel Portal Frame building
- Ideal for Equestrian Interest
- Ample parking
- Carport, Dog Run, Greenhouse
- Close to Berwick on Northumberland Coast

## Description

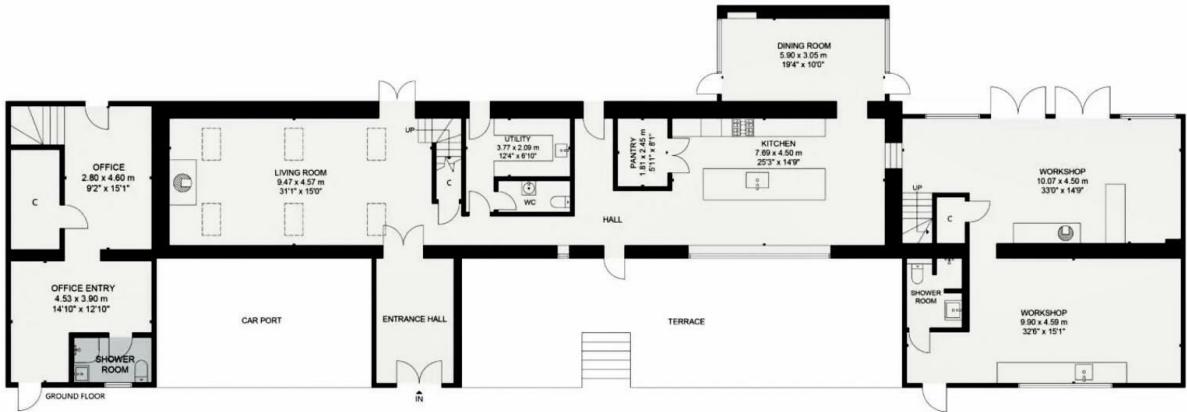
WOW! The Old Barn & Cottages is an incredible and rare lifestyle opportunity sitting in 6 acres close to Berwick upon Tweed on the Northumberland Coast with a stunning barn conversion, three holiday cottages, a large steel portal framed outbuilding incorporating an equestrian surface and stables, stunning grounds, further development potential for a home office or additional holiday let (STP)

## Directions





# Floor plans



Energy Efficiency Rating		
	Current	Potential
Very energy efficient - lower running costs		
(92 plus) <b>A</b>		
(81-91) <b>B</b>		
(69-80) <b>C</b>		
(55-68) <b>D</b>		
(39-54) <b>E</b>		
(21-38) <b>F</b>		
(1-20) <b>G</b>		
Not energy efficient - higher running costs		
<b>Scotland</b>	EU Directive 2002/91/EC	



Unit 3 Mason Court Gillan Way, Penrith 40 Business Park  
 Penrith  
 Cumbria  
 CA11 9GR  
 01768881111  
 Sales@brittonestates.co.uk  
 www.brittonestates.co.uk