



Boroughgate | | Appleby-In-Westmorland | CA16 6XG

Guide Price £275,000



david britton
ESTATES

Key features

- Grade II listed terrace house
- Riverside (75 feet,22.9m) with patio and fishing rights on River Eden
- Beautifully presented and packed full of original features and charm
- Spacious accommodation spilt over three floors
- Living room
- Dining kitchen
- WC
- Two first floor bedrooms
- Family Jack & Jill bathroom
- Second floor bedroom

Description

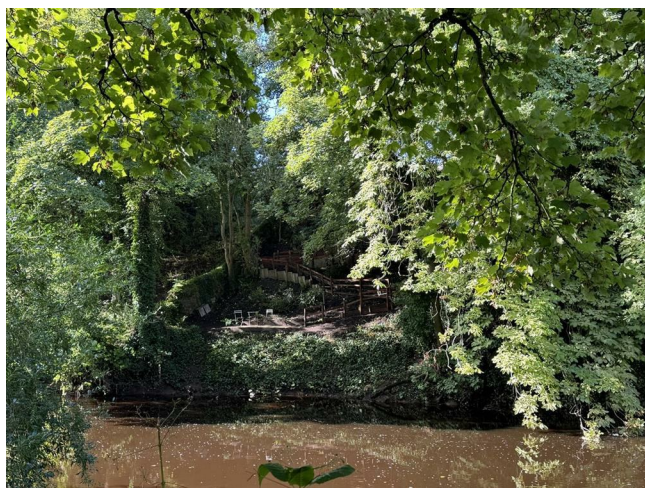
17th Century house with separate garden and huge landscaped riverbank with riverside patio alongside the River Eden including fishing rights. A fabulous wildlife haven.

Situated on Appleby's prestigious Boroughgate is this stunning 17th Century grade II listed three-bedroom terrace house which comes with a spectacular riverbank garden and fishing rights. This historic property oozes character, and charm and is packed full of original features. The property was built in 1637 and stands midway between Appleby Castle at the top of the street and the beautiful 14th-century St Lawrence's church at the bottom.

Internally the property is spacious at over 1,100 sq.ft (102 sq.m) and is split over three floors, comprising on the ground floor an entrance vestibule, living room, dining kitchen and a rear entrance vestibule & WC, on the first floor there are two bedrooms, a family jack & jill bathroom, and on the second floor there is a further very large bedroom. Externally the property has parking to the front. To the rear through a communal courtyard the property benefits from having a good size private garden which leads to the property's unique feature - the landscaped riverbank garden leading down to The River Eden with over 75 feet (22.9 m.) of riverside including the fishing rights - a perfect place to sit and relax, have a barbecue with family and friends or enjoy some fishing.

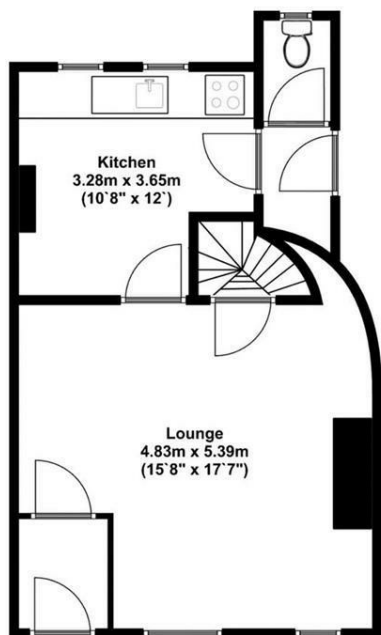
The riverbank lies between the grounds of Appleby Castle and The Masonic Hall and opposite Appleby Bowls Club - it has been described as a perfect quiet haven of peace - but lies only seconds from Boroughgate. This is an opportunity to own a piece of paradise on The River Eden. This is a fabulous wildlife haven where you can sit at the riverside patio and watch otters, kingfishers and red squirrels! The three photos of wildlife at the end of the slide show were all taken recently from the riverbank.

Directions

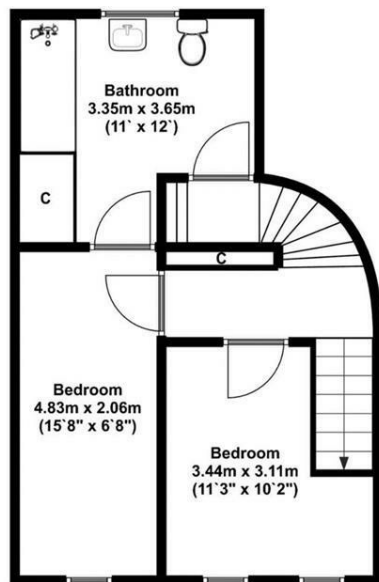




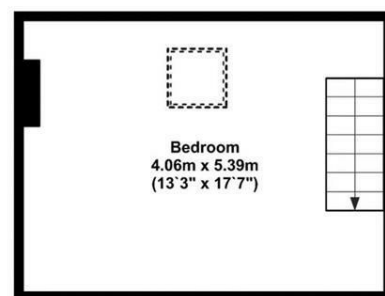
Floor plans



Ground Floor
Approx 42.00 Sq meters (452.00 Sq feet).



First Floor
Approx 39.00 Sq meters (420.00 Sq feet).



Third Floor
Approx 22.00 Sq meters (237.00 Sq feet).



Unit 3 Mason Court Gillan Way, Penrith 40 Business Park
Penrith
Cumbria
CA11 9GR
01768881111
Sales@brittonestates.co.uk
www.brittonestates.co.uk