



Raiselands Croft | | Penrith | CA11 9JN

Guide Price £159,950



david britton
ESTATES

Key features

- 3 bedroom semi detached family home
- Well established residential area
- Some cosmetic updating required
- Good plot with spacious easily managed rear garden
- Gas central heating and UPVC double glazed windows & doors
- Cavity wall and loft insulation
- Replacement roof in recent years
- Within walking distance of Penrith town centre and amenities
- A short distance from M6 Motorway, Lakes, Pennines, Carlisle & Kendal
- No upward chain!

Description

Situated on a well established residential area close to the heart of Penrith Town Centre, this 3 bedroom semi detached house offers a great opportunity to update and personalise to their own taste. Having benefited from a new roof, installation of UPVC double glazed windows and doors and cavity wall insulation, this property will also appeal to those looking for a rental property as its energy efficiency is above average. With a lounge, kitchen, 3 bedrooms, bathroom and a spacious easily manage rear garden, there is further scope both inside and out. **** No Upward Chain****

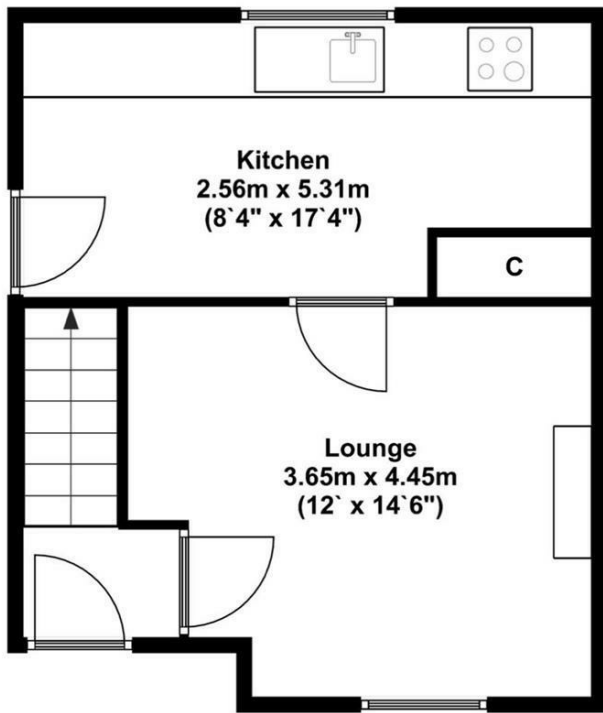
It is only a stone's throw away from the heart of Penrith where there are lots of local amenities including shops, pubs, restaurants, cafes, schools, leisure facilities, doctors' surgeries, hospital and a train station. Penrith offers easy access to the M6, A66 and the Lake District National Park.

Directions

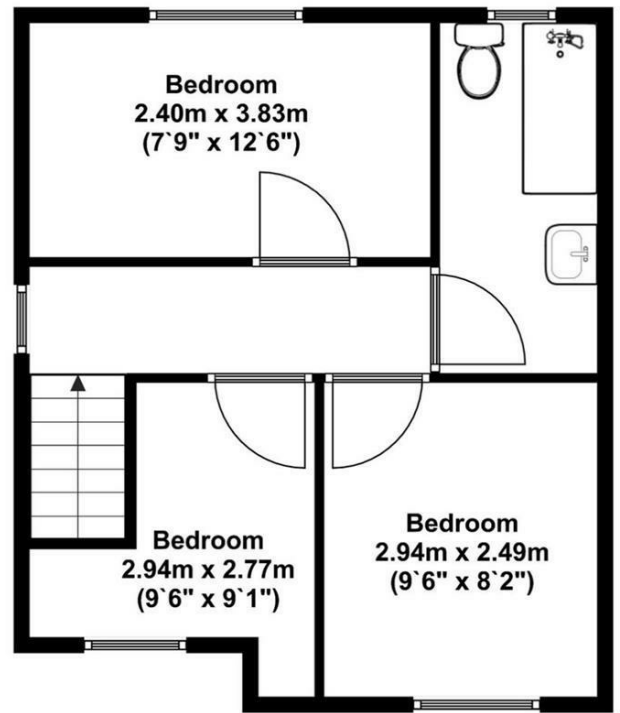




Floor plans



Ground Floor
Approx 33.00 Sq meters (355.00 Sq feet).



Ground Floor
Approx 33.00 Sq meters (355.00 Sq feet).

Energy Efficiency Rating		
	Current	Potential
Very energy efficient - lower running costs		
(92 plus) A		
(81-91) B		
(69-80) C		
(55-68) D		
(39-54) E		
(21-38) F		
(1-20) G		
Not energy efficient - higher running costs		
England & Wales	EU Directive 2002/91/EC	



Unit 3 Mason Court Gillan Way, Penrith 40 Business Park
 Penrith
 Cumbria
 CA11 9GR
 01768881111
 Sales@brittonestates.co.uk
 www.brittonestates.co.uk