

Living  
made  
better

Da Vinci Torre  
Lewisham, SE13 7FA



1



1



1



B

Offers In Excess Of £300,000

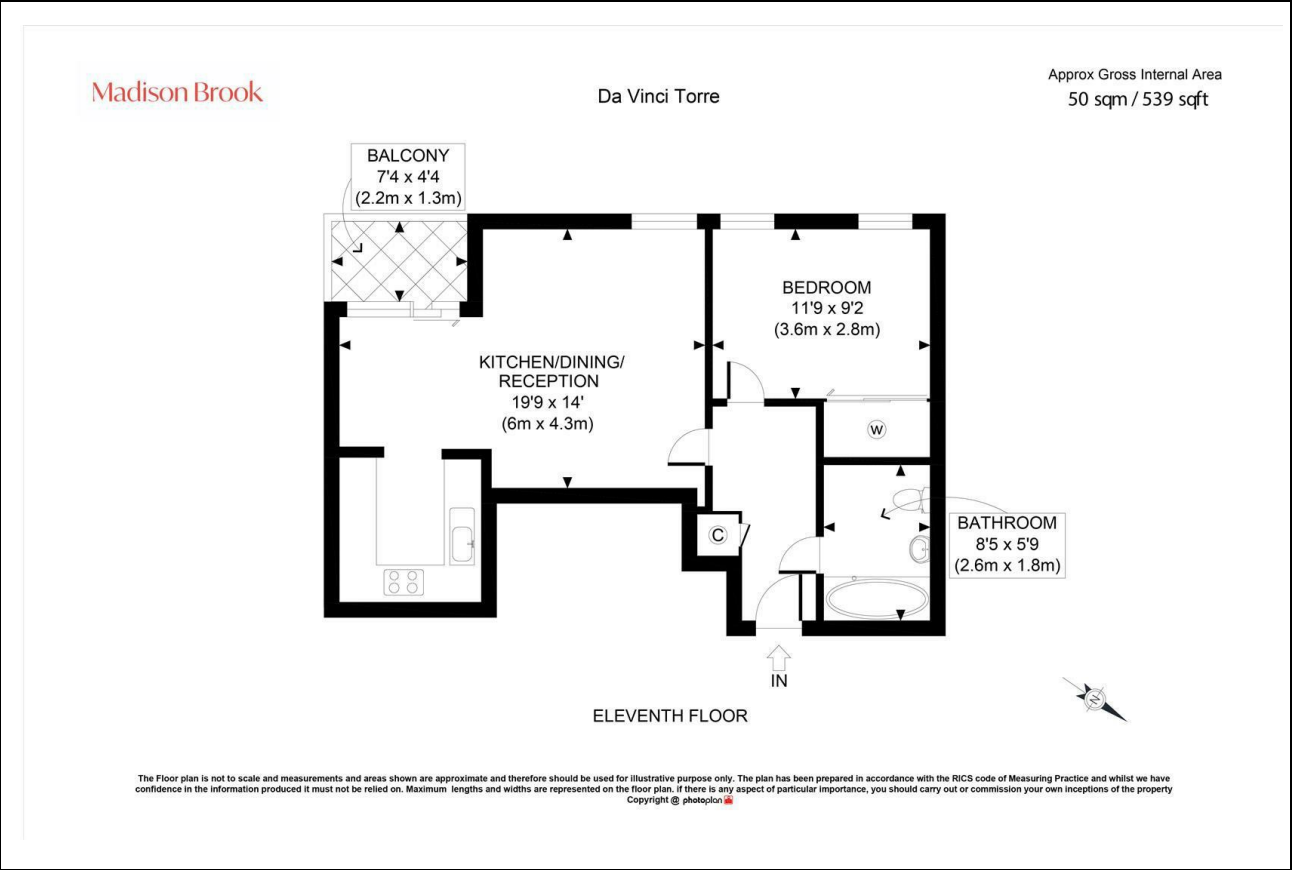
# Da Vinci Torre, Lewisham, SE13 7FA

Madison Brook

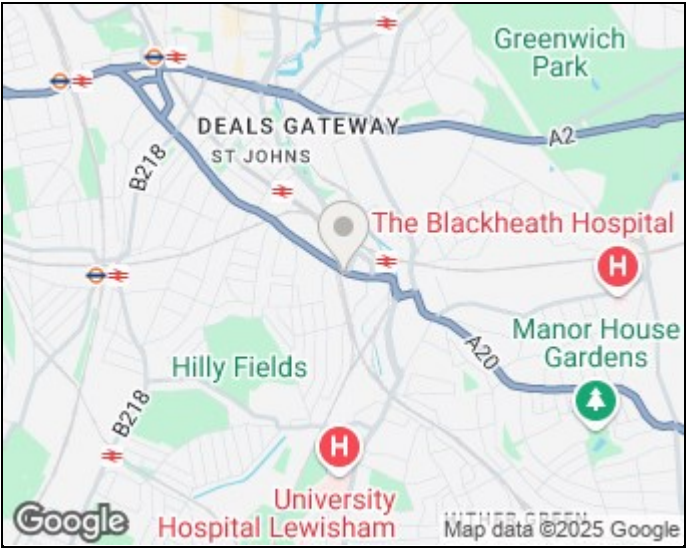
## Property Summary

Located on the 11th floor of Da Vinci Torre, this bright and modern one-bedroom apartment offers 539 sq. ft. of well-planned space and a private balcony. The open-plan kitchen/living area features laminate flooring and built-in appliances, while the double bedroom includes fitted storage. A smart three-piece bathroom, concierge service, and excellent transport links via Lewisham Station make this a fantastic home or investment. Chain free and moments from local shops and amenities.

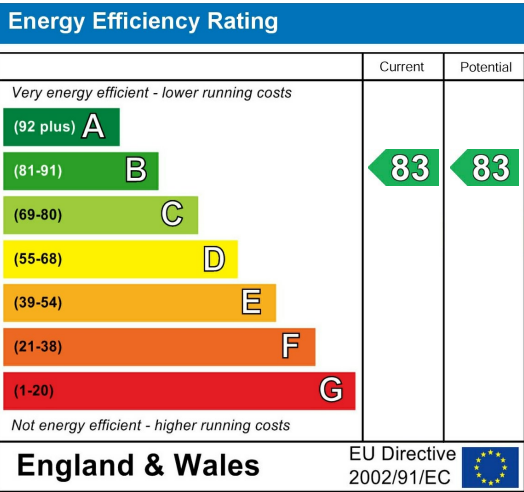
## Floorplan



## Area Map



## Energy Efficiency Graph



These particulars, whilst believed to be accurate are set out as a general outline only for guidance and do not constitute any part of an offer or contract. Intending purchasers should not rely on them as statements of representation of fact, but must satisfy themselves by inspection or otherwise as to their accuracy. No person in this firm's employment has the authority to make or give any representation or warranty in respect of the property.

43 Loampit Vale, Lewisham, London, SE13 7FT  
Tel: 020 3946 6200 Email:  
lewisham@madisonbrook.com  
<https://madisonbrook.com/>