

Living
made
better

Roma Corte
Lewisham, SE13 7GP



Offers In Excess Of £300,000

Roma Corte, Lewisham, SE13 7GP

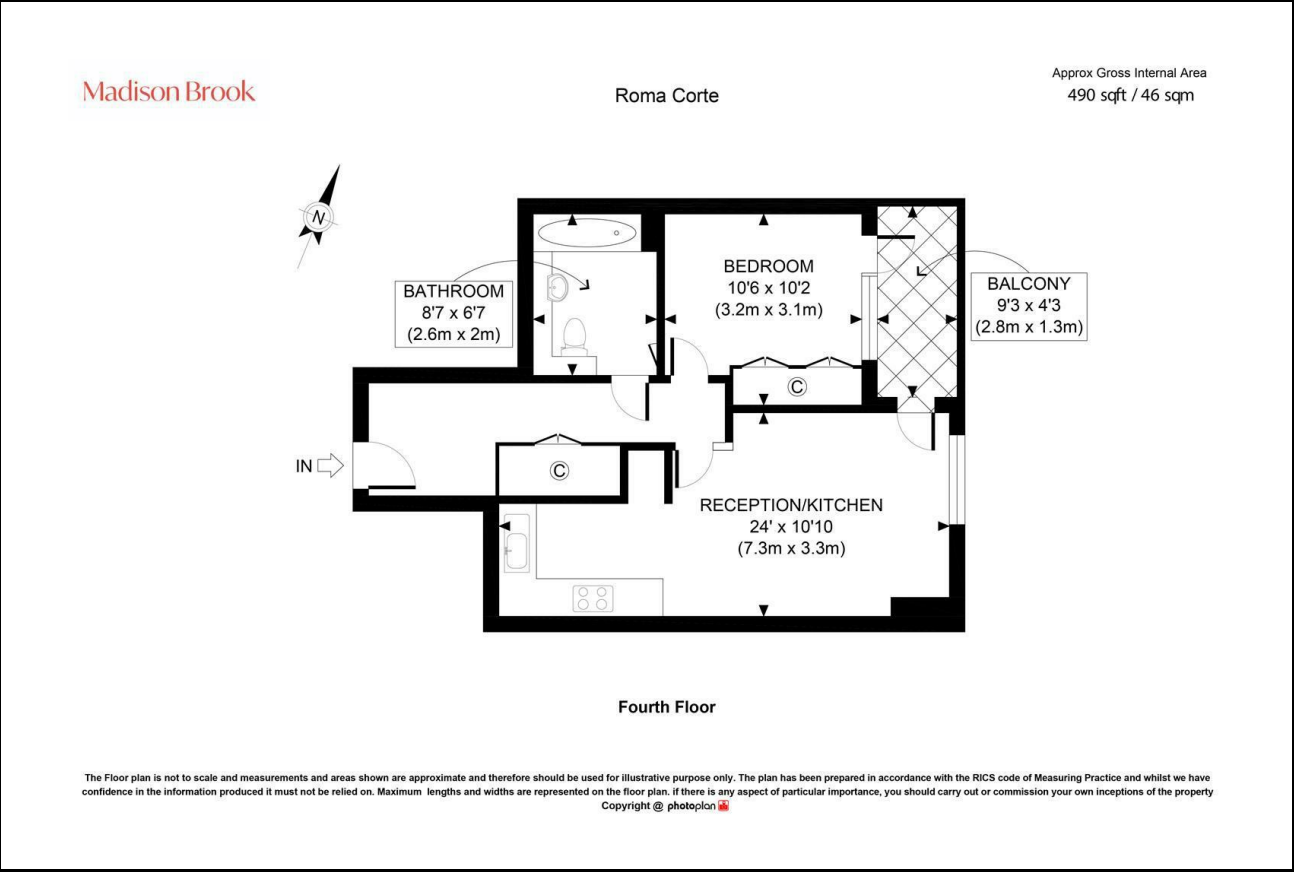
Madison Brook

Property Summary

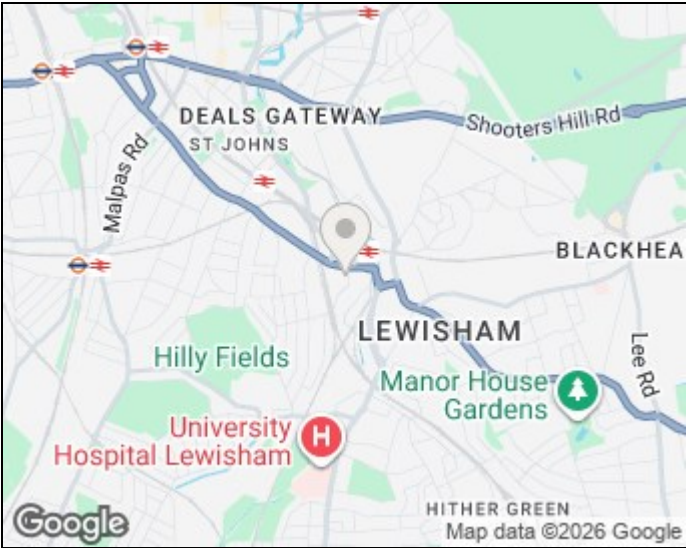
A modern one-bedroom apartment situated on the fourth floor of Roma Corte, offering open-plan living, a private balcony, and excellent resident facilities including a 24-hour concierge and communal terrace. Ideally located within walking distance of Lewisham Station and Shopping Centre, providing superb transport links into Canary Wharf and Central London.

Service charge: £2,260.92 pa | Ground rent: £450 pa | Lease: 111 years remaining

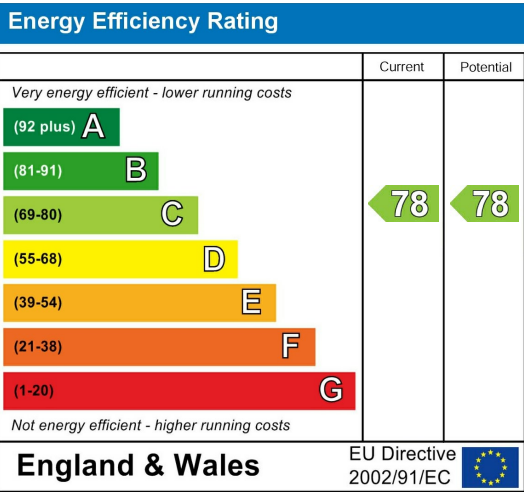
Floorplan



Area Map



Energy Efficiency Graph



These particulars, whilst believed to be accurate are set out as a general outline only for guidance and do not constitute any part of an offer or contract. Intending purchasers should not rely on them as statements of representation of fact, but must satisfy themselves by inspection or otherwise as to their accuracy. No person in this firms employment has the authority to make or give any representation or warranty in respect of the property.

43 Loampit Vale, Lewisham, London, SE13 7FT
Tel: 020 3946 6200 Email:
lewisham@madisonbrook.com
<https://madisonbrook.com/>