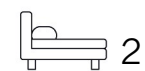


Living
made
better

Roma Corte
Lewisham, SE13 7GS



B

Offers In Excess Of £400,000

Roma Corte, Lewisham, SE13 7GS

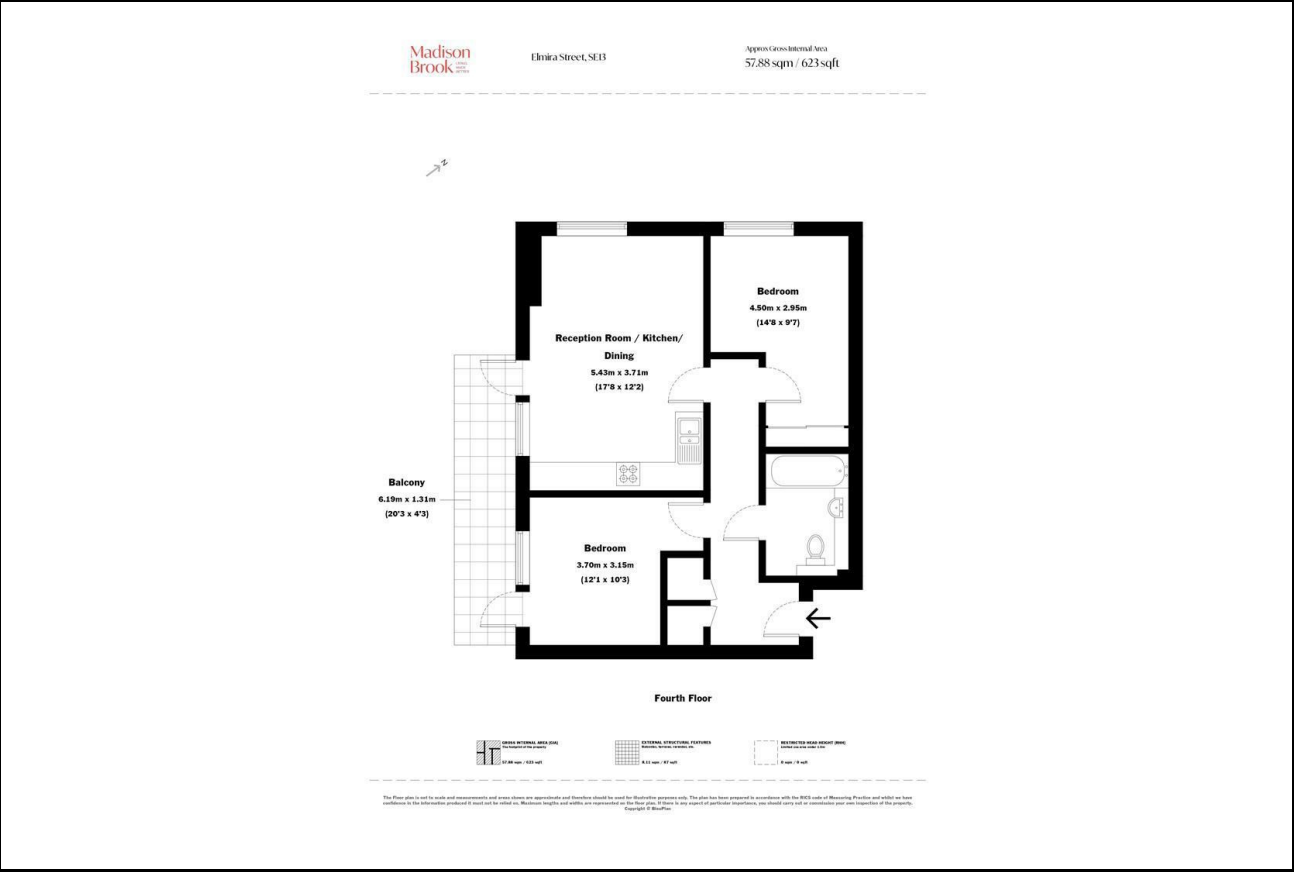
Madison Brook

Property Summary

This modern two-bedroom apartment is set in the heart of Lewisham, just 0.2 miles from Lewisham Train and DLR Stations, providing excellent links to Canary Wharf and Central London. Perfect for professionals and investors, it offers a blend of style, convenience, and connectivity.

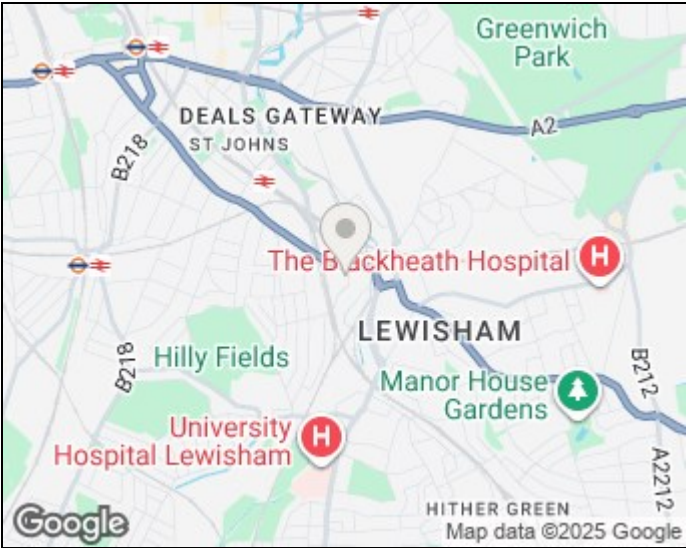
Located on the fourth floor, the apartment boasts a bright open-plan kitchen and living area, complete with laminate flooring and access to a private balcony, ideal for relaxing or entertaining.

Floorplan

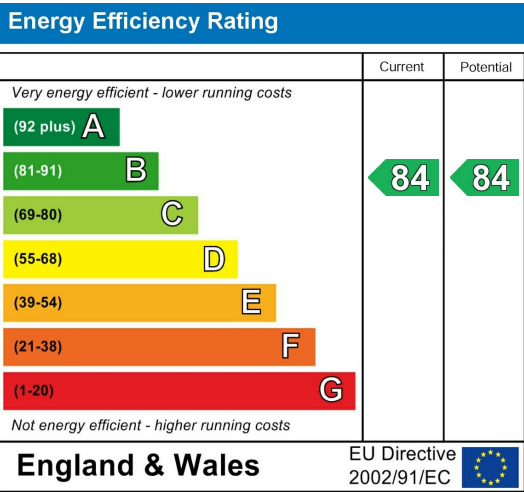


These particulars, whilst believed to be accurate are set out as a general outline only for guidance and do not constitute any part of an offer or contract. Intending purchasers should not rely on them as statements of representation of fact, but must satisfy themselves by inspection or otherwise as to their accuracy. No person in this firm's employment has the authority to make or give any representation or warranty in respect of the property.

Area Map



Energy Efficiency Graph



43 Loampit Vale, Lewisham, London, SE13 7FT
Tel: 020 3946 6200 Email: lewisham@madisonbrook.com
<https://madisonbrook.com/>