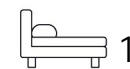




Living  
made  
better

Roma corte  
Lewisham, SE13 7GP



£1,700 PCM

# Roma corte, Lewisham, SE13 7GP

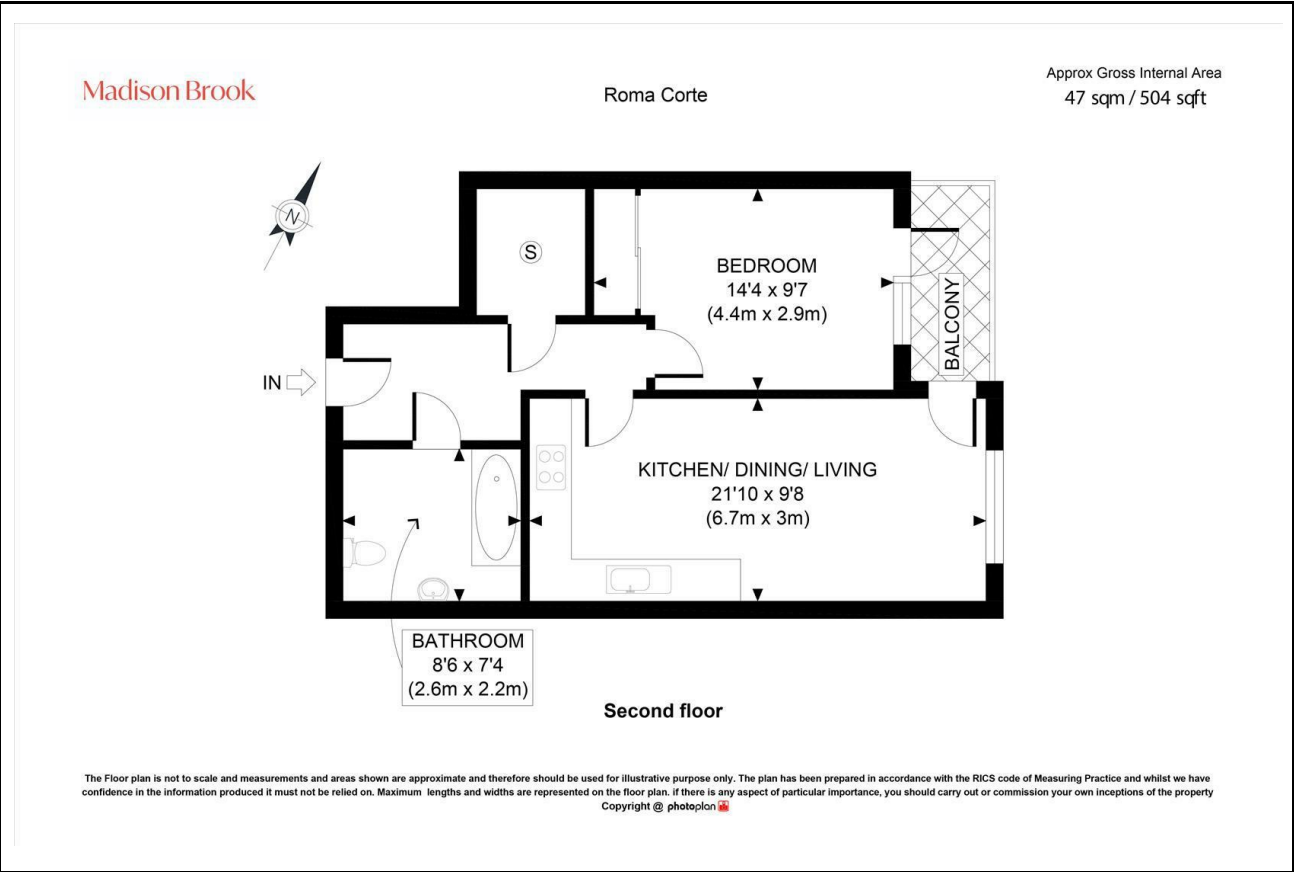
Madison Brook

## Property Summary

Located on the second floor of the desirable Roma Corte development, this stylish one-bedroom apartment spans approximately 504 sq. ft. and offers bright, modern living throughout. The property features an open-plan reception and kitchen with integrated appliances, a spacious double bedroom, and a contemporary three-piece bathroom. A private balcony, accessible from both the living area and bedroom.

Residents also benefit from a 24-hour concierge and close proximity to local amenities and Lewisham Station, offering excellent transport links across London.

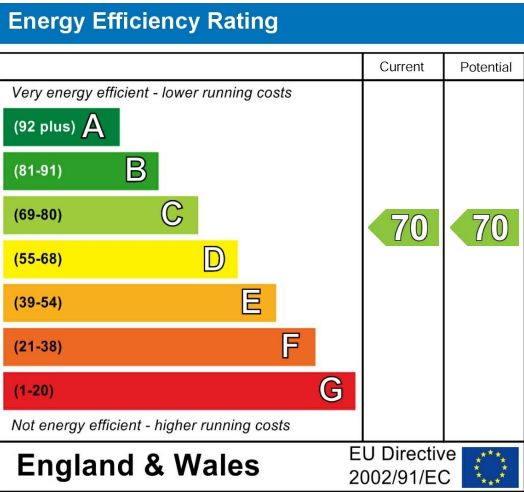
## Floorplan



## Area Map



## Energy Efficiency Graph



These particulars, whilst believed to be accurate are set out as a general outline only for guidance and do not constitute any part of an offer or contract. Intending purchasers should not rely on them as statements of representation of fact, but must satisfy themselves by inspection or otherwise as to their accuracy. No person in this firms employment has the authority to make or give any representation or warranty in respect of the property.

43 Loampit Vale, Lewisham, London, SE13 7FT  
Tel: 020 3946 6200 Email:  
lewisham@madisonbrook.com  
<https://madisonbrook.com/>