



Living
made
better

Warehouse Court
Woolwich, SE18 6FE



Asking Price £425,000

Warehouse Court, Woolwich, SE18 6FE

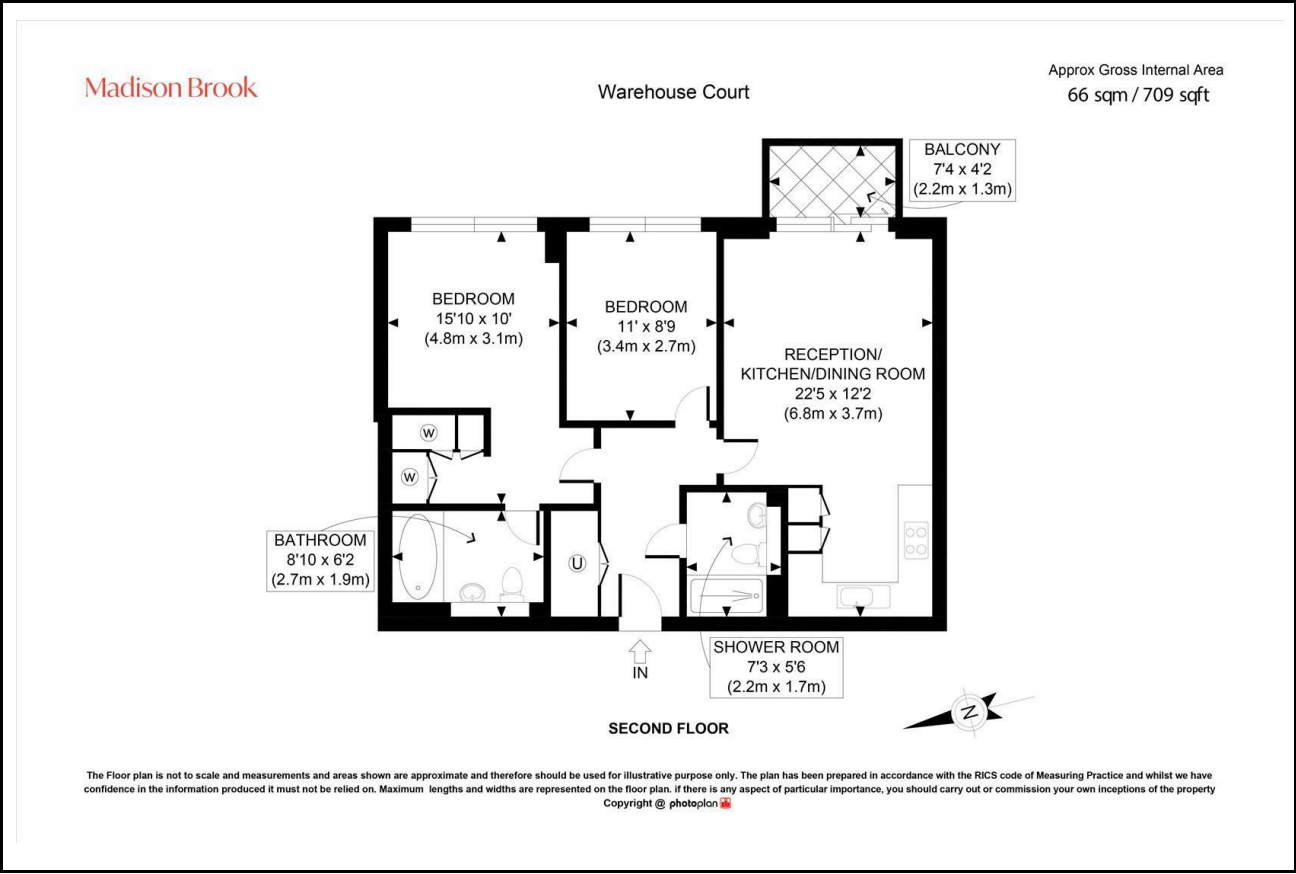
Madison Brook

Property Summary

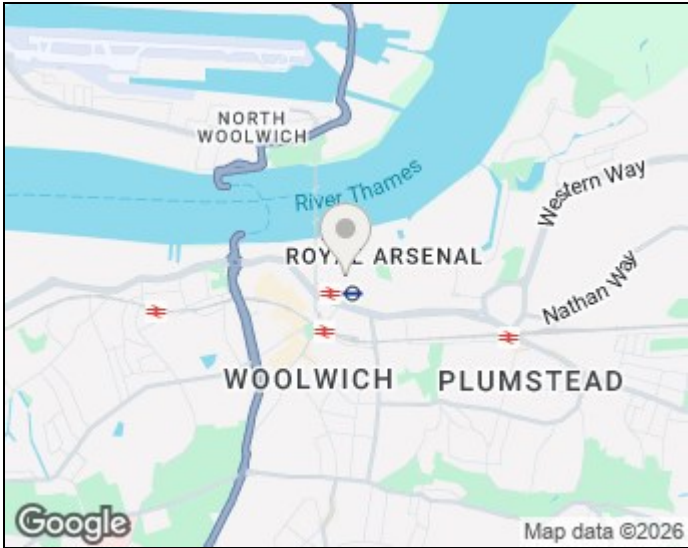
A bright and modern two-bedroom apartment within the Royal Arsenal Riverside development, ideally located close to Woolwich Arsenal Tube and Train stations. The property features a spacious open-plan reception/kitchen with granite worktops, wooden flooring, and direct access to a private balcony. Accommodation includes two double bedrooms, a family bathroom, and a separate shower room. Additional benefits include concierge service and no onward chain.

Service Charge: £3,508 pa | Ground Rent: £452 pa | Lease Remaining: 113 years

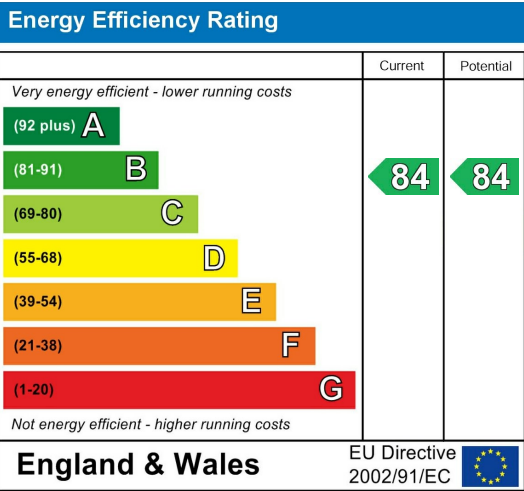
Floorplan



Area Map



Energy Efficiency Graph



43 Loampit Vale, Lewisham, London, SE13 7FT
Tel: 020 3946 6200 Email: lewisham@madisonbrook.com
<https://madisonbrook.com/>

These particulars, whilst believed to be accurate are set out as a general outline only for guidance and do not constitute any part of an offer or contract. Intending purchasers should not rely on them as statements of representation of fact, but must satisfy themselves by inspection or otherwise as to their accuracy. No person in this firm's employment has the authority to make or give any representation or warranty in respect of the property.