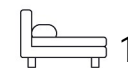




Living  
made  
better

Roma Corte  
Lewisham, SE13 7GS



Asking Price £300,000

# Roma Corte, Lewisham, SE13 7GS

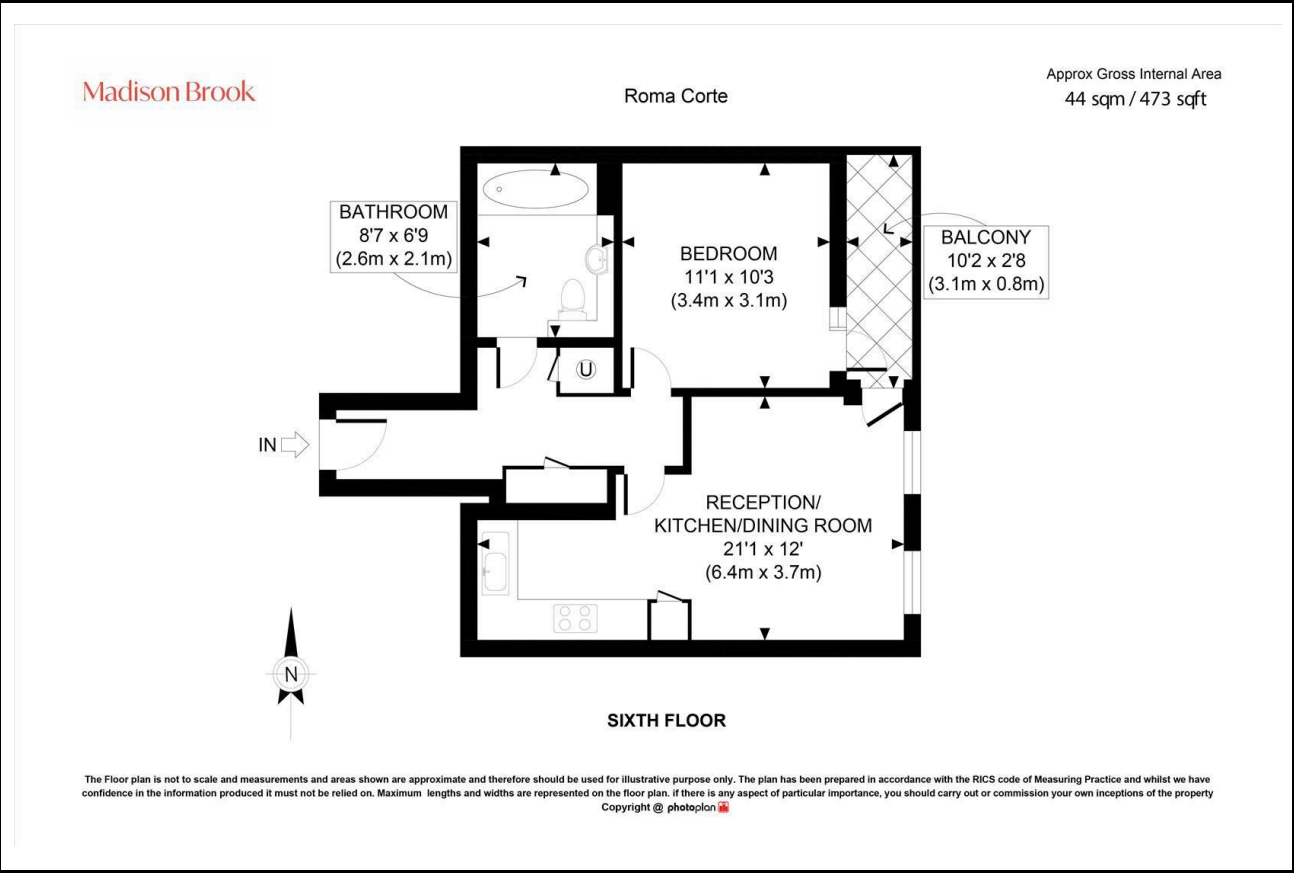
Madison Brook

## Property Summary

A modern sixth-floor, one-bedroom apartment in Roma Corte, Lewisham, offering 473 sq. ft. of stylish living space. The open-plan kitchen/reception features integrated appliances and access to a private balcony, while the double bedroom also enjoys balcony access. A sleek three-piece bathroom completes the home. Residents benefit from a 24-hour concierge and communal terrace. Just 0.2 miles from Lewisham Station and 0.3 miles from Lewisham Shopping Centre, this property offers both convenience and connectivity. Sold with no onward chain.

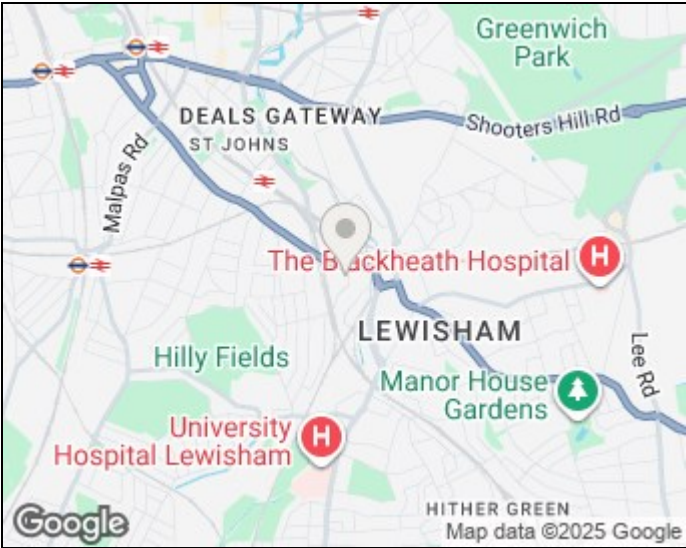
Service Charge: £2,181 pa | Ground Rent: £450 pa | Lease Length: 115 years remaining

## Floorplan

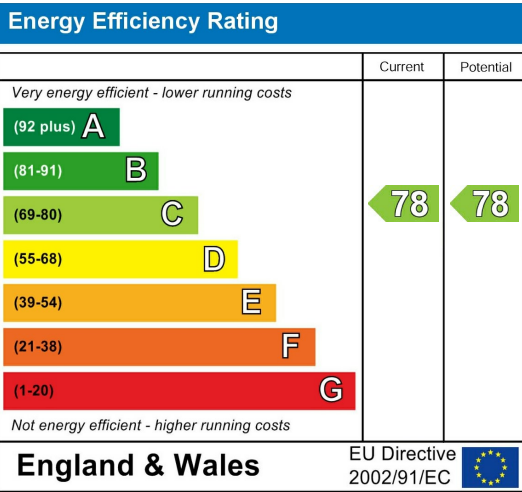


These particulars, whilst believed to be accurate are set out as a general outline only for guidance and do not constitute any part of an offer or contract. Intending purchasers should not rely on them as statements of representation of fact, but must satisfy themselves by inspection or otherwise as to their accuracy. No person in this firm's employment has the authority to make or give any representation or warranty in respect of the property.

## Area Map



## Energy Efficiency Graph



43 Loampit Vale, Lewisham, London, SE13 7FT  
Tel: 020 3946 6200 Email:  
lewisham@madisonbrook.com  
<https://madisonbrook.com/>