



Living  
made  
better

Roma Corte  
Lewisham, SE13 7GR



2



1



1



B

£2,200 PCM

# Roma Corte, Lewisham, SE13 7GR

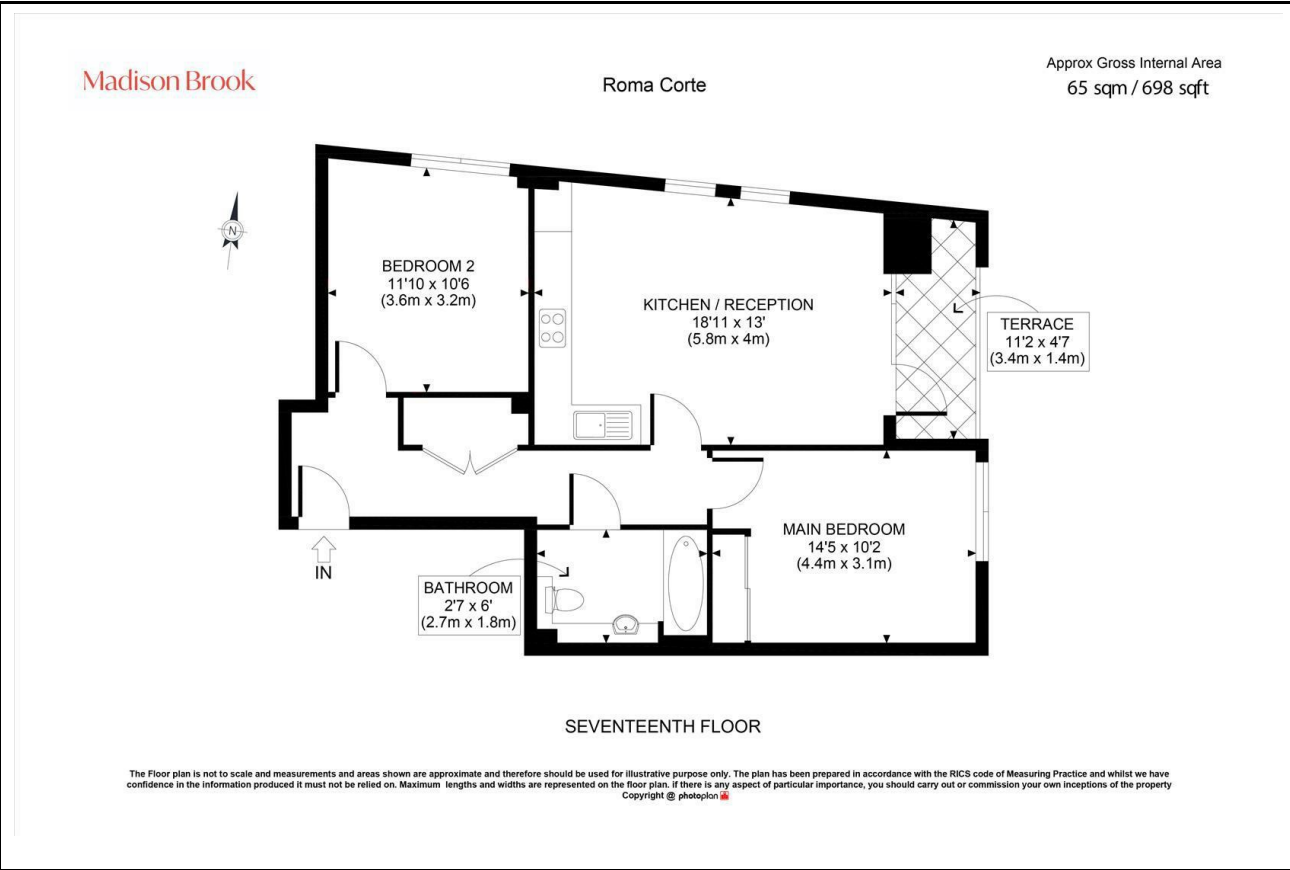
Madison Brook

## Property Summary

Positioned on the 17th floor of Roma Corte within the popular Renaissance development, this modern two-bedroom apartment offers 698 sq. ft. of bright, well-planned living. The open-plan kitchen/reception room features integrated appliances and access to a private balcony. The principle bedroom includes fitted wardrobes, while the second double bedroom is equally well-sized.

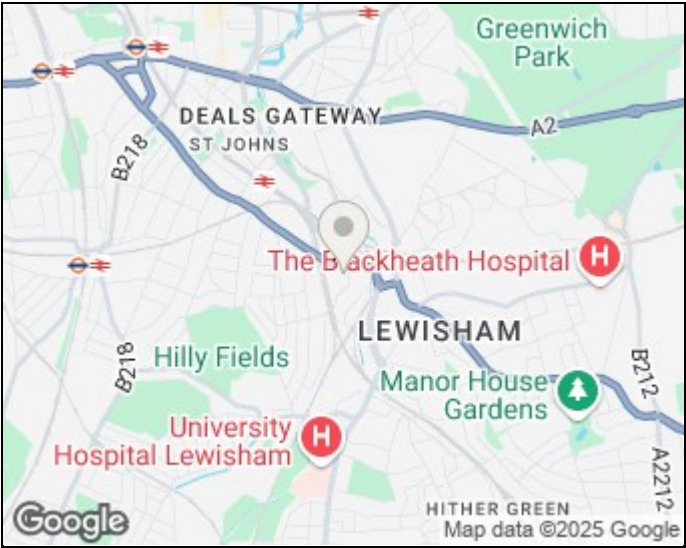
Residents benefit from a 24-hour concierge, communal roof terrace, and proximity to Lewisham Station (DLR & Southeastern), offering swift links to Canary Wharf, London Bridge, and the City.

## Floorplan

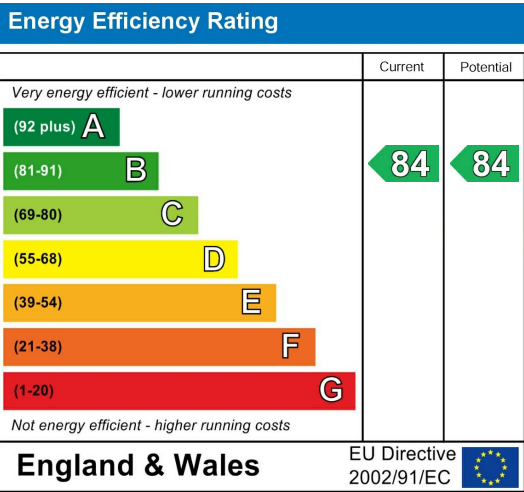


These particulars, whilst believed to be accurate are set out as a general outline only for guidance and do not constitute any part of an offer or contract. Intending purchasers should not rely on them as statements of representation of fact, but must satisfy themselves by inspection or otherwise as to their accuracy. No person in this firm's employment has the authority to make or give any representation or warranty in respect of the property.

## Area Map



## Energy Efficiency Graph



43 Loampit Vale, Lewisham, London, SE13 7FT  
Tel: 020 3946 6200 Email:  
lewisham@madisonbrook.com  
<https://madisonbrook.com/>