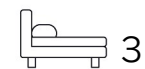


Living
made
better

Maltby House
Kidbrooke Village, SE3 9FJ



Price Guide £425,000

Maltby House, Kidbrooke Village, SE3 9FJ

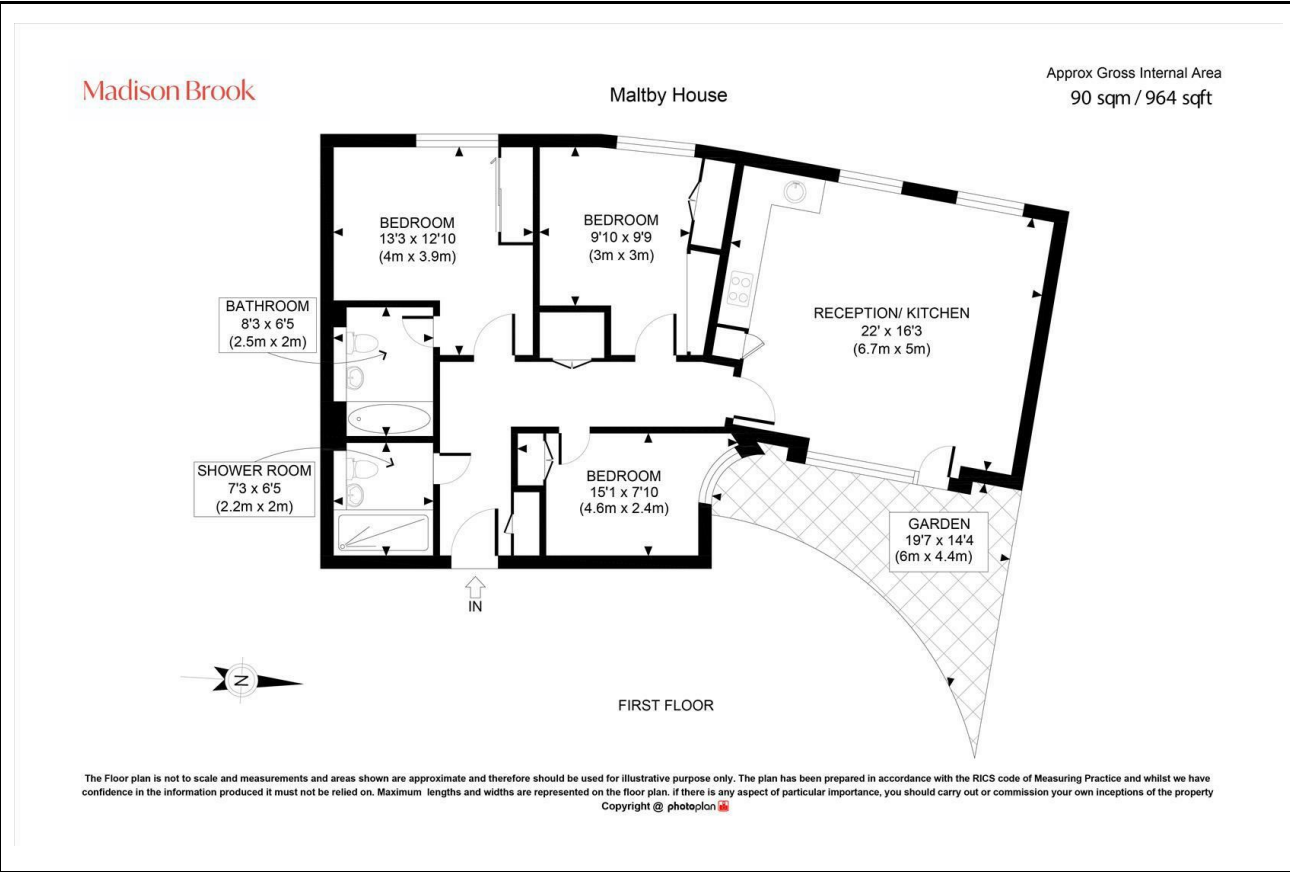
Madison Brook

Property Summary

This three-bedroom, two-bathroom apartment in Maltbay House offers 982 sq. ft. of space and a private patio, with a modern open-plan kitchen/living room and wooden flooring throughout. The principal bedroom has a built-in wardrobe and en-suite, while the remaining bedrooms also feature fitted storage. A second shower room provides added flexibility.

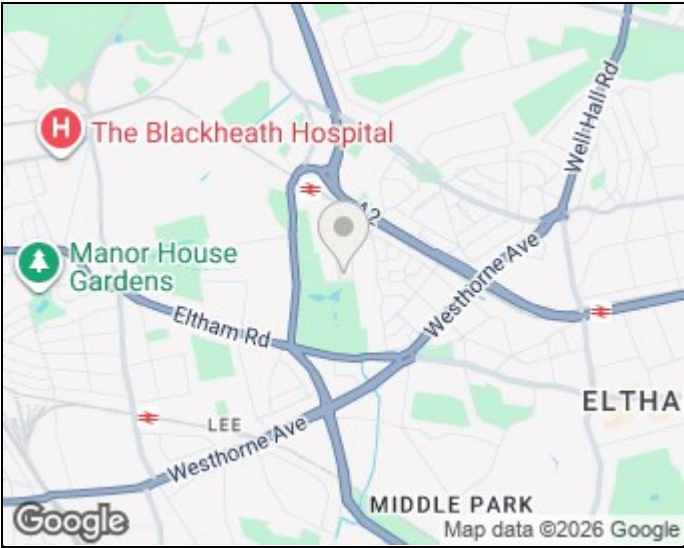
Residents enjoy 24-hour concierge, a residents' gym, and proximity to Kidbrooke Station (0.4 miles).

Floorplan

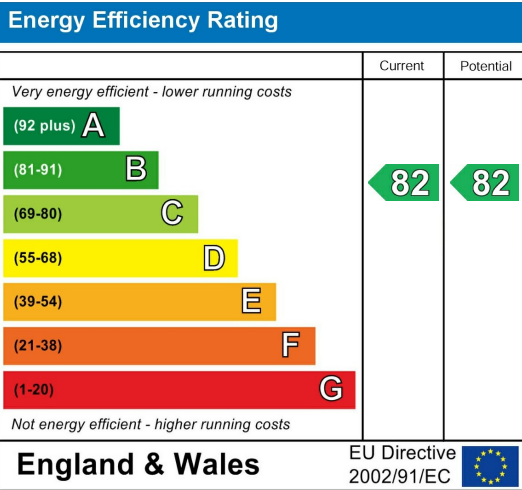


These particulars, whilst believed to be accurate are set out as a general outline only for guidance and do not constitute any part of an offer or contract. Intending purchasers should not rely on them as statements of representation of fact, but must satisfy themselves by inspection or otherwise as to their accuracy. No person in this firms employment has the authority to make or give any representation or warranty in respect of the property.

Area Map



Energy Efficiency Graph



43 Loampit Vale, Lewisham, London, SE13 7FT
Tel: 020 3946 6200 Email:
lewisham@madisonbrook.com
<https://madisonbrook.com/>