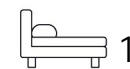




Living
made
better

Pacific Wharf
Rotherhithe, SE16 5QF



£1,700 PCM

Pacific Wharf, Rotherhithe, SE16 5QF

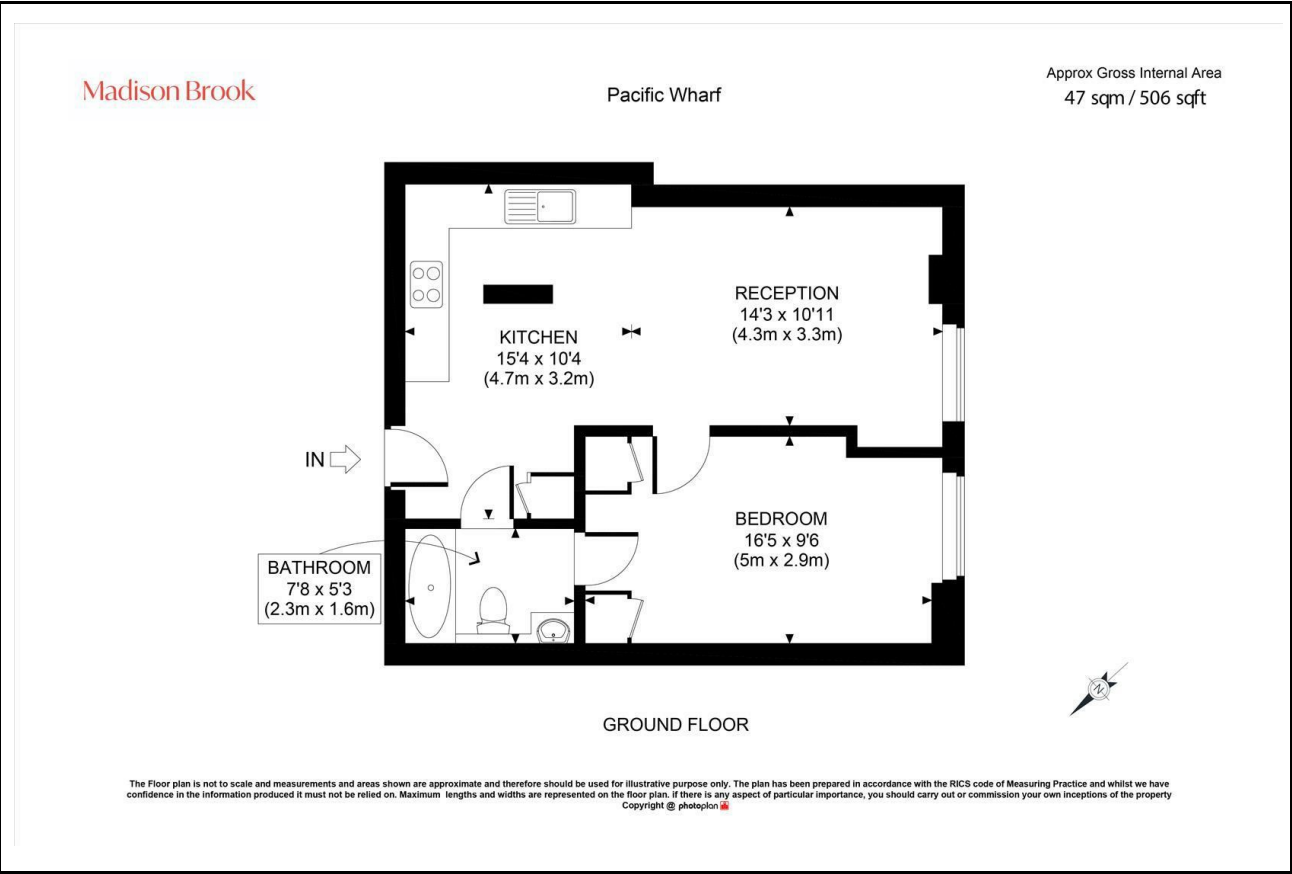
Madison Brook

Property Summary

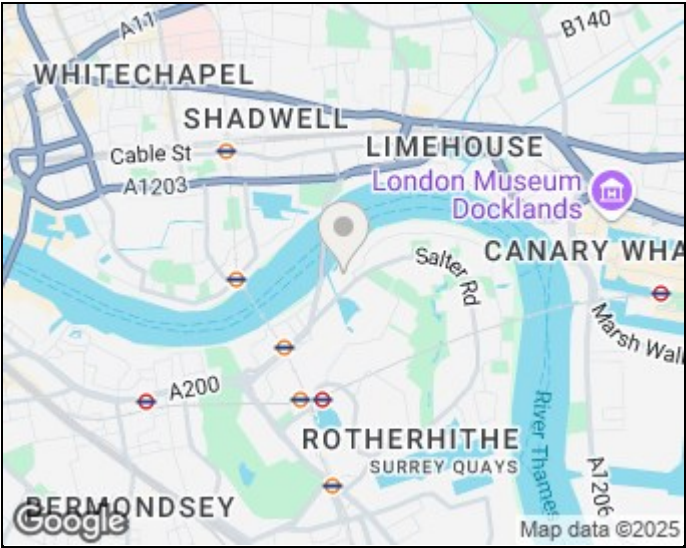
This spacious one-bedroom apartment sits within Pacific Wharf, a gated riverside development just moments from scenic Thames walks. With 506 sq. ft. of space, the home offers a fully furnished interior, open-plan kitchen/reception, and a generously sized bedroom with built-in storage.

Residents benefit from excellent local amenities and transport links, with Rotherhithe Overground 0.4 miles away and Canada Water Tube Station 0.5 miles from the doorstep.

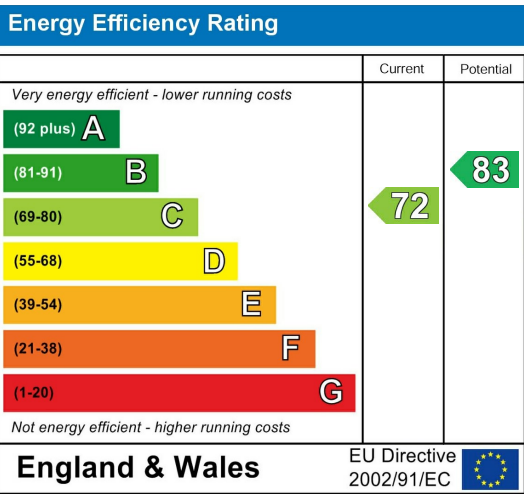
Floorplan



Area Map



Energy Efficiency Graph



These particulars, whilst believed to be accurate are set out as a general outline only for guidance and do not constitute any part of an offer or contract. Intending purchasers should not rely on them as statements of representation of fact, but must satisfy themselves by inspection or otherwise as to their accuracy. No person in this firms employment has the authority to make or give any representation or warranty in respect of the property.

43 Loampit Vale, Lewisham, London, SE13 7FT
Tel: 020 3946 6200 Email:
lewisham@madisonbrook.com
<https://madisonbrook.com/>