



Living
made
better

Grayston House
Blackheath, SE3 9FP



2



2



1



B

Offers In Excess Of £425,000

Grayston House, Blackheath, SE3 9FP

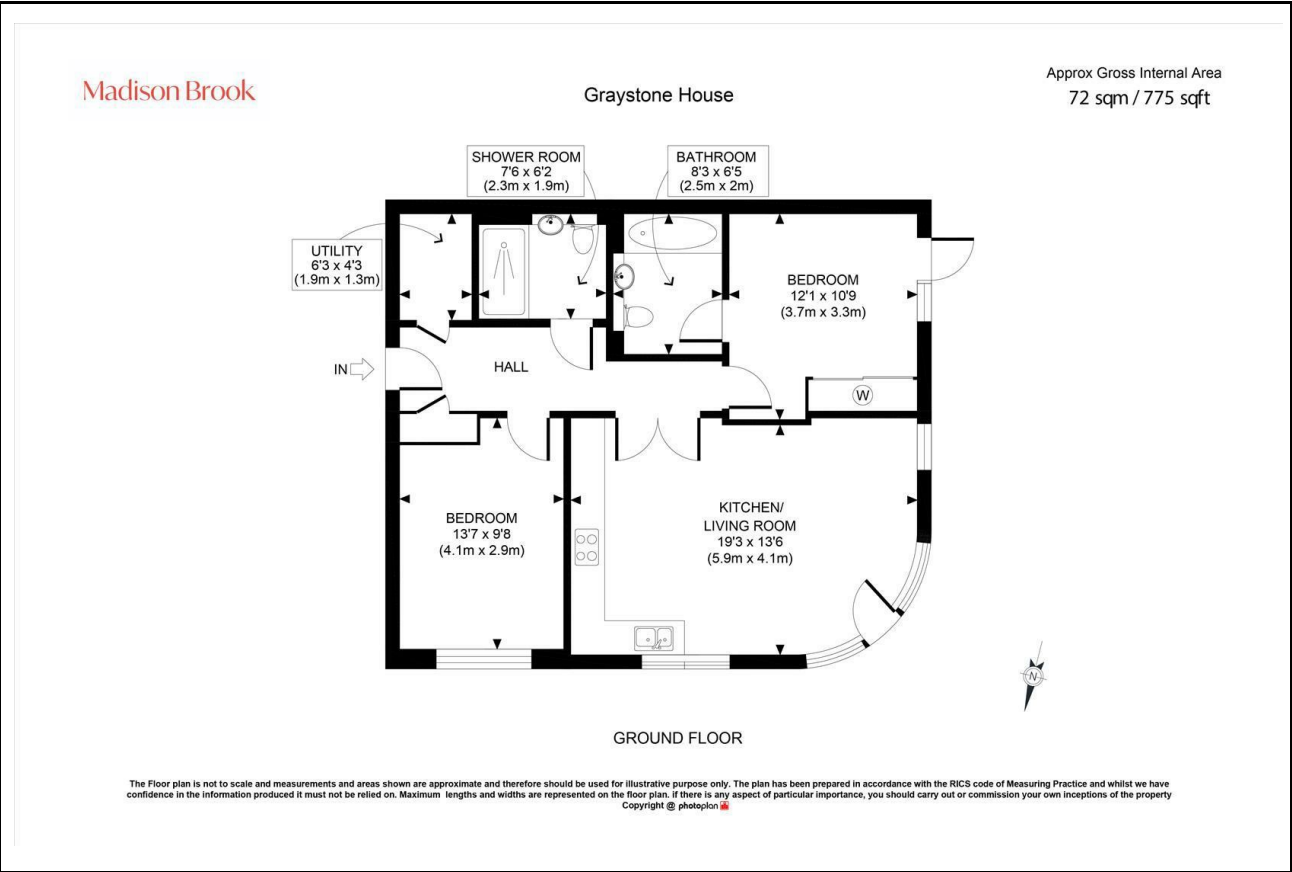
Madison Brook

Property Summary

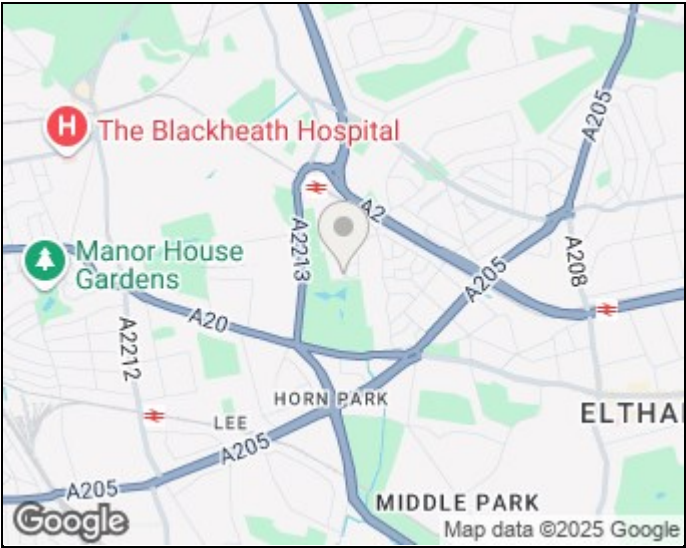
Set on the ground floor of Graystone House, this well-presented two-bedroom, two-bathroom apartment offers approx. 775 sq. ft. of internal space. It features a large open-plan kitchen/living room with curved glazing, two double bedrooms — including a principal with en-suite — a full three-piece bathroom, and a separate utility room.

Ideally located just 0.4 miles from Kidbrooke Station and 0.1 miles from Cator Park, the property combines generous space with excellent local access.

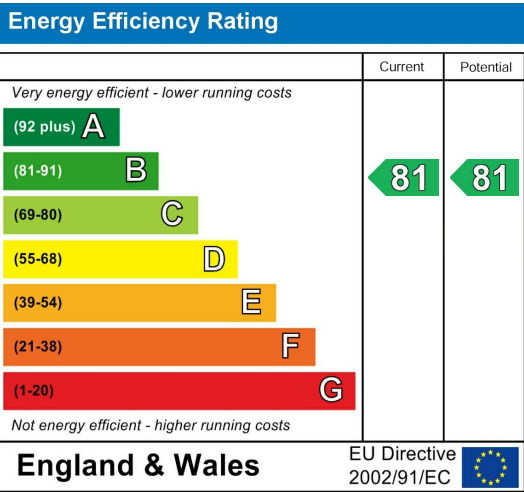
Floorplan



Area Map



Energy Efficiency Graph



These particulars, whilst believed to be accurate are set out as a general outline only for guidance and do not constitute any part of an offer or contract. Intending purchasers should not rely on them as statements of representation of fact, but must satisfy themselves by inspection or otherwise as to their accuracy. No person in this firm's employment has the authority to make or give any representation or warranty in respect of the property.

43 Loampit Vale, Lewisham, London, SE13 7FT
Tel: 020 3946 6200 Email:
lewisham@madisonbrook.com
<https://madisonbrook.com/>