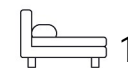


Living
made
better

Adana Building
Lewisham, SE13 7FB



Offers In Excess Of £250,000

Adana Building, Lewisham, SE13 7FB

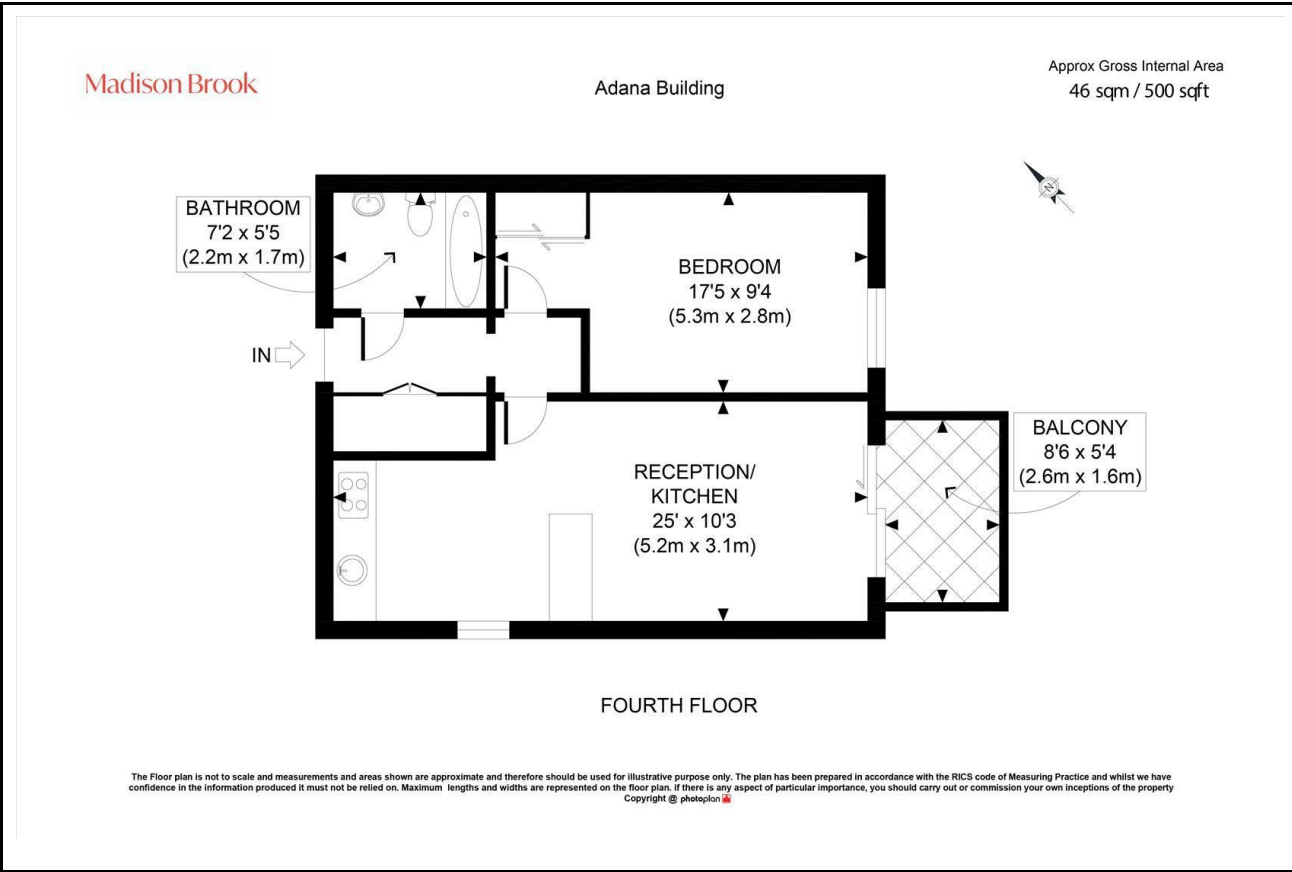
Madison Brook

Property Summary

Set on the fourth floor, this bright and well-proportioned one-bedroom apartment spans approximately 500 sq. ft. and features a spacious open-plan reception and kitchen, a private balcony, and a large double bedroom. The kitchen includes contemporary units, a breakfast bar, and integrated appliances including a dishwasher. A modern three-piece bathroom and hallway storage add practicality.

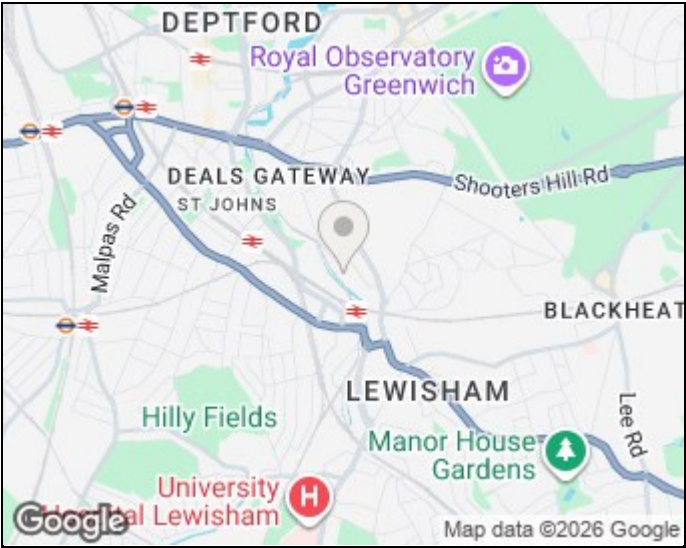
Residents benefit from 24-hour concierge service and access to a resident-only gym. Ideally located just 0.1 miles from Elverson Road DLR and 0.3 miles from Lewisham Train and DLR stations. The property is offered chain-free and available immediately.

Floorplan

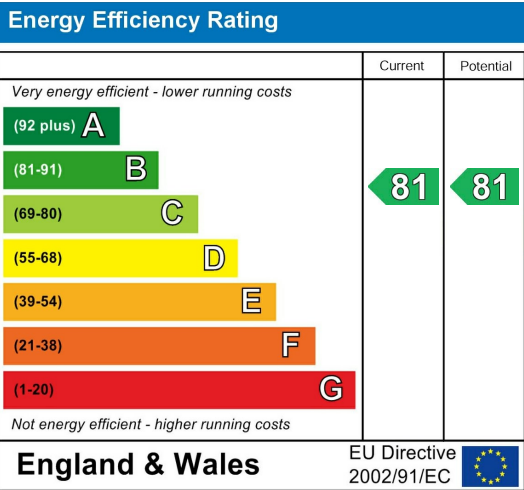


These particulars, whilst believed to be accurate are set out as a general outline only for guidance and do not constitute any part of an offer or contract. Intending purchasers should not rely on them as statements of representation of fact, but must satisfy themselves by inspection or otherwise as to their accuracy. No person in this firm's employment has the authority to make or give any representation or warranty in respect of the property.

Area Map



Energy Efficiency Graph



43 Loampit Vale, Lewisham, London, SE13 7FT
Tel: 020 3946 6200 Email:
lewisham@madisonbrook.com
<https://madisonbrook.com/>