



Living
made
better

City Peninsula
Greenwich, SE10 0FN



Offers In Excess Of £450,000

City Peninsula, Greenwich, SE10 OFN

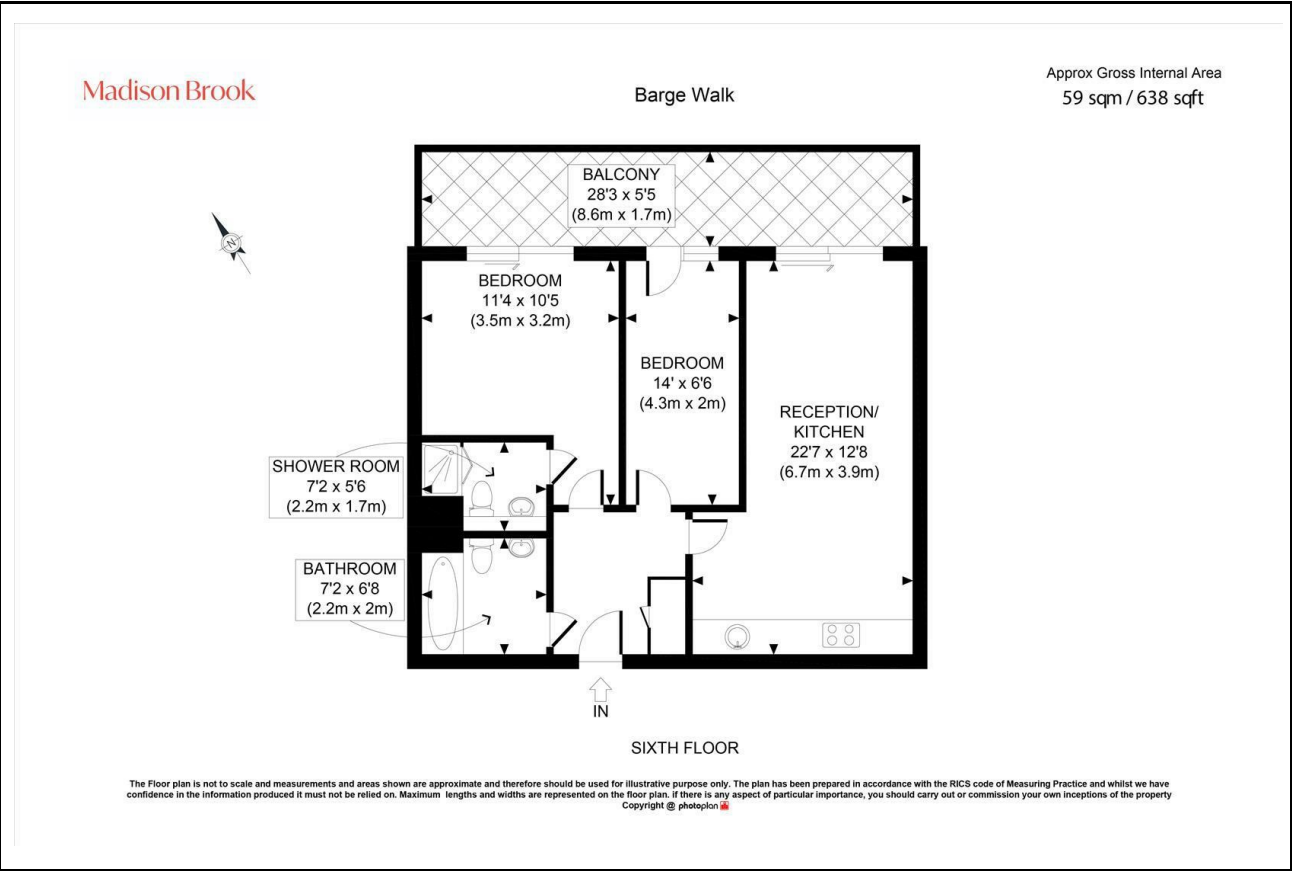
Madison Brook

Property Summary

Located on the sixth floor of City Peninsula, this two-bedroom, two-bathroom apartment offers 638 sq. ft. of well-planned living space and a generous private balcony measuring over 28 ft. in length. The home features a spacious open-plan reception/kitchen, two bedrooms, a main bathroom, and a separate shower room for added convenience. Both bedrooms are positioned towards the rear of the property, while the reception space opens directly onto the balcony, offering an ideal flow between indoor and outdoor areas. The apartment is served by lift access and secure entry.

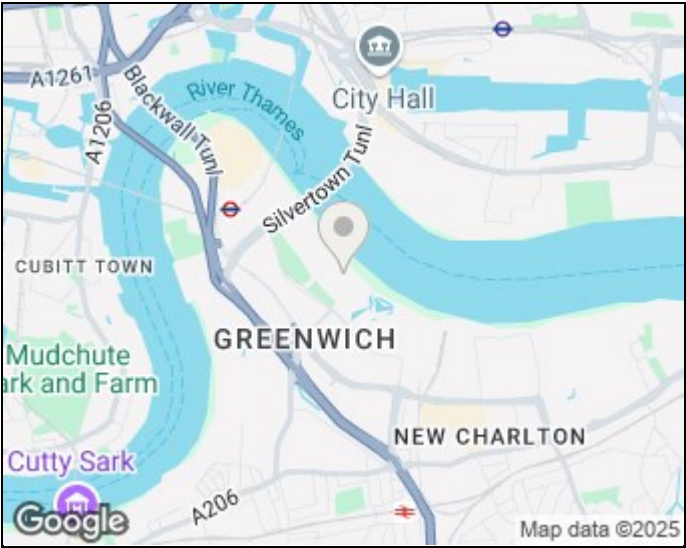
Set in Barge Walk, SE10, the property is ideally situated just 0.6 miles from North Greenwich Tube Station, providing swift connections via the Jubilee Line to Canary Wharf and central London.

Floorplan

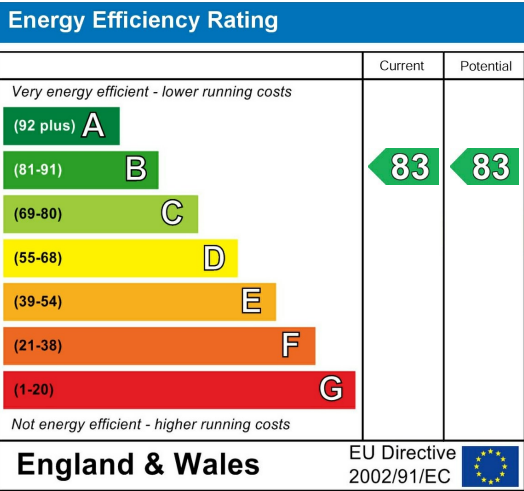


These particulars, whilst believed to be accurate are set out as a general outline only for guidance and do not constitute any part of an offer or contract. Intending purchasers should not rely on them as statements of representation of fact, but must satisfy themselves by inspection or otherwise as to their accuracy. No person in this firm's employment has the authority to make or give any representation or warranty in respect of the property.

Area Map



Energy Efficiency Graph



43 Loampit Vale, Lewisham, London, SE13 7FT
Tel: 020 3946 6200 Email:
lewisham@madisonbrook.com
<https://madisonbrook.com/>