



Living  
made  
better

Roma Corte  
Lewisham, SE13 7GR



£1,750 PCM

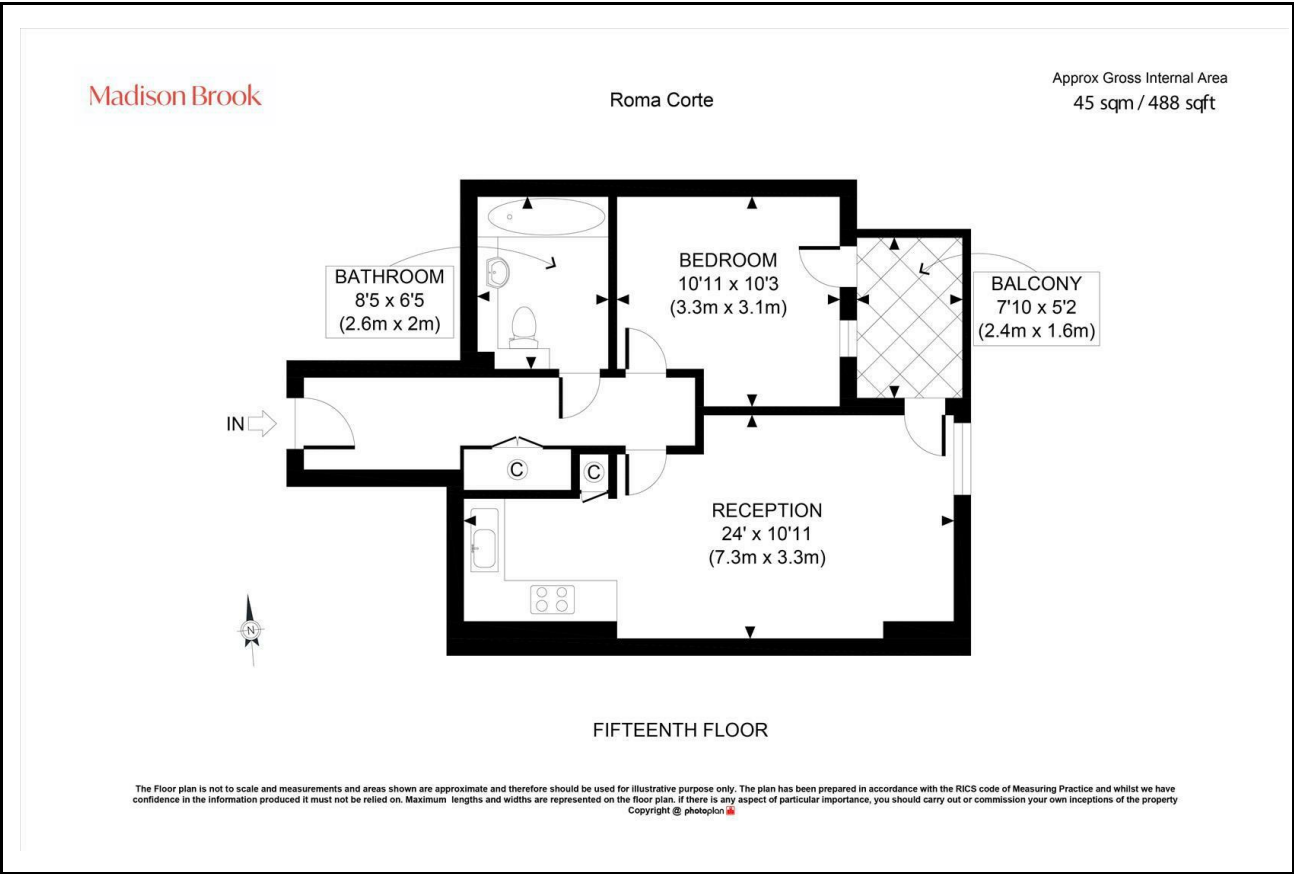
# Roma Corte, Lewisham, SE13 7GR

Madison Brook

## Property Summary

Set on the 15th floor of the popular Renaissance Development, this bright and modern one-bedroom apartment offers 488 sq. ft. of internal space and a private balcony with wide-reaching views. The property features an open-plan kitchen/reception with integrated appliances, a well-proportioned bedroom, and a stylish bathroom. Offered furnished, with 24-hour concierge and access to a communal roof terrace. Located just a 3-minute walk to Lewisham DLR, rail, and bus stations, with journey times including 11 minutes to London Bridge and 16 to Canary Wharf. Local shops, supermarkets, and leisure facilities are all close by.

## Floorplan

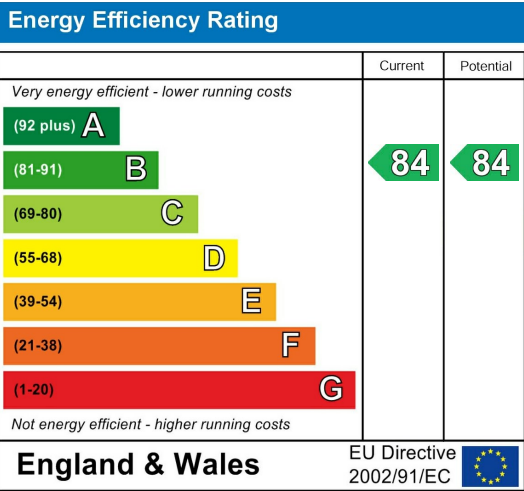


These particulars, whilst believed to be accurate are set out as a general outline only for guidance and do not constitute any part of an offer or contract. Intending purchasers should not rely on them as statements of representation of fact, but must satisfy themselves by inspection or otherwise as to their accuracy. No person in this firm's employment has the authority to make or give any representation or warranty in respect of the property.

## Area Map



## Energy Efficiency Graph



43 Loampit Vale, Lewisham, London, SE13 7FT  
Tel: 020 3946 6200 Email:  
lewisham@madisonbrook.com  
<https://madisonbrook.com/>