

Living
made
better

Blackheath Road
Greenwich, SE10 8PD



Offers In Excess Of £250,000

Blackheath Road, Greenwich, SE10 8PD

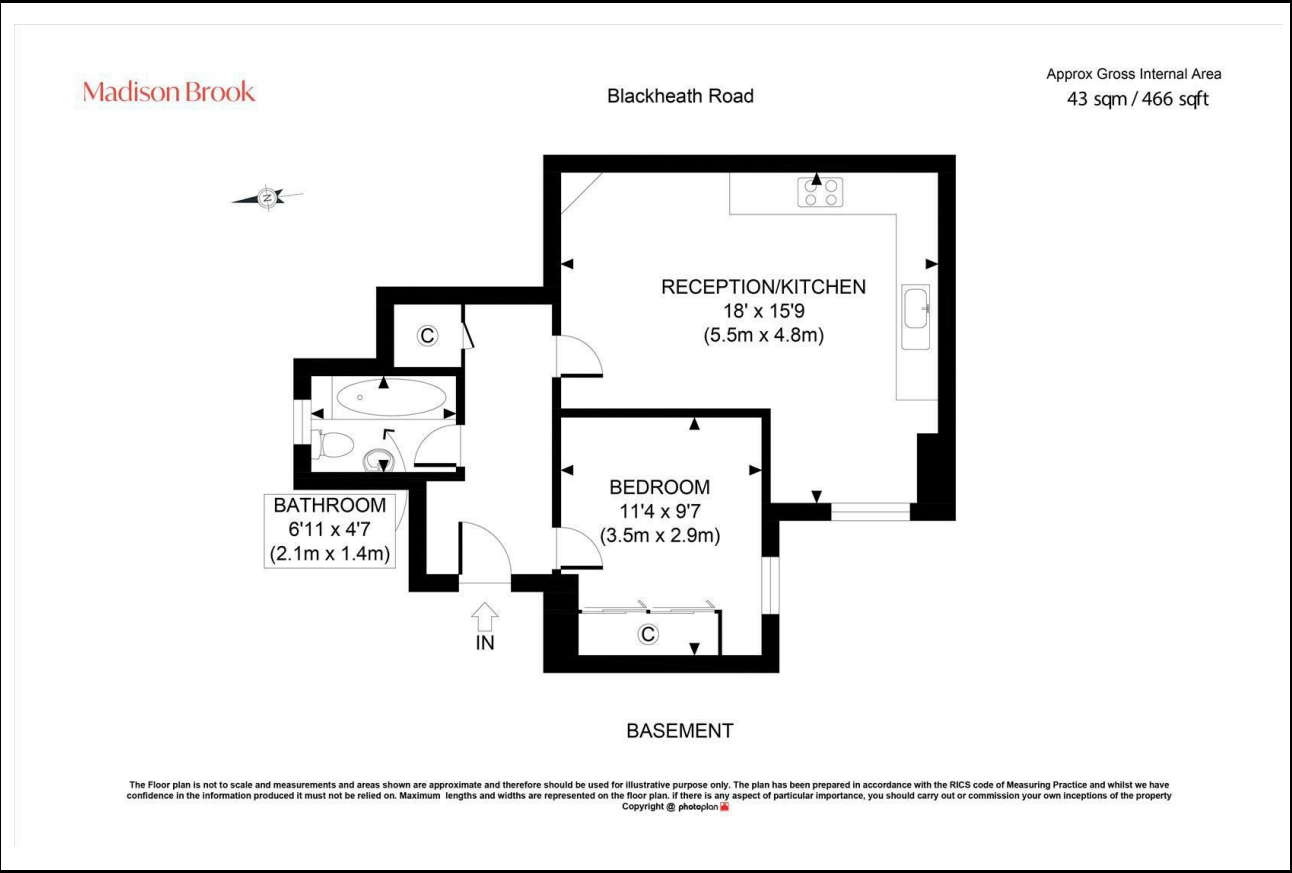
Madison Brook

Property Summary

Set on the ground floor of a smart period conversion, this one-bedroom apartment features a modern open-plan kitchen/living area, wooden floors throughout, and a limestone-finished three-piece bathroom. The bedroom is a well-sized double with carpeted flooring, and residents benefit from access to a communal garden. Offered with no onward chain, the property is an ideal first-time buy or investment.

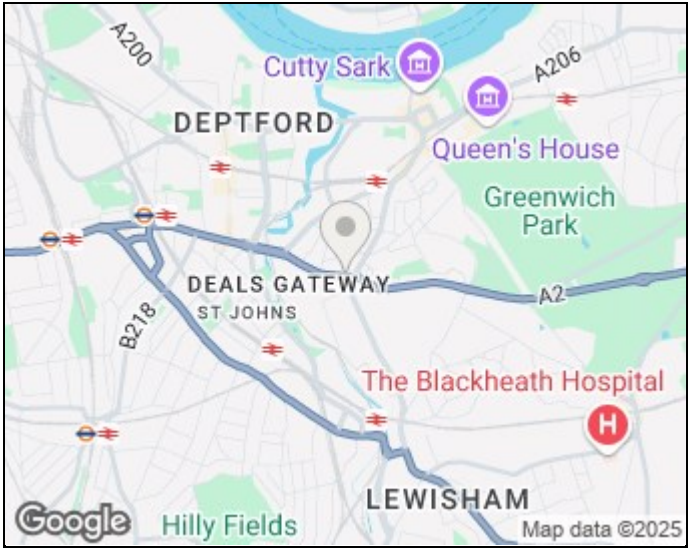
Located just 0.4 miles from Greenwich Station and 0.5 miles from Deptford Bridge DLR, with Royal Greenwich Park and town centre amenities close by.

Floorplan

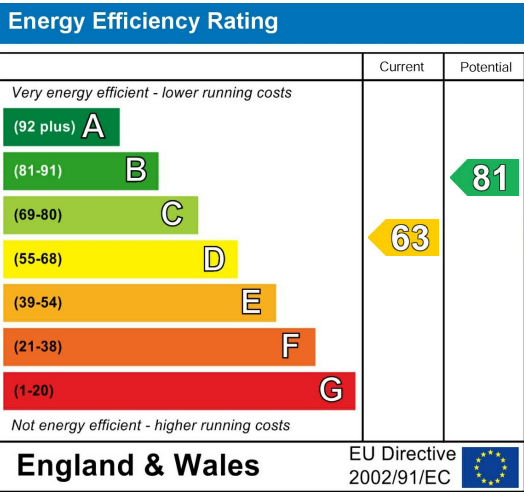


These particulars, whilst believed to be accurate are set out as a general outline only for guidance and do not constitute any part of an offer or contract. Intending purchasers should not rely on them as statements of representation of fact, but must satisfy themselves by inspection or otherwise as to their accuracy. No person in this firm's employment has the authority to make or give any representation or warranty in respect of the property.

Area Map



Energy Efficiency Graph



43 Loampit Vale, Lewisham, London, SE13 7FT
Tel: 020 3946 6200 Email:
lewisham@madisonbrook.com
<https://madisonbrook.com/>