

Living  
made  
better

Johnson Court  
Kidbrooke Village, SE9 6BS



£1,650 PCM

# Johnson Court, Kidbrooke Village, SE9 6BS

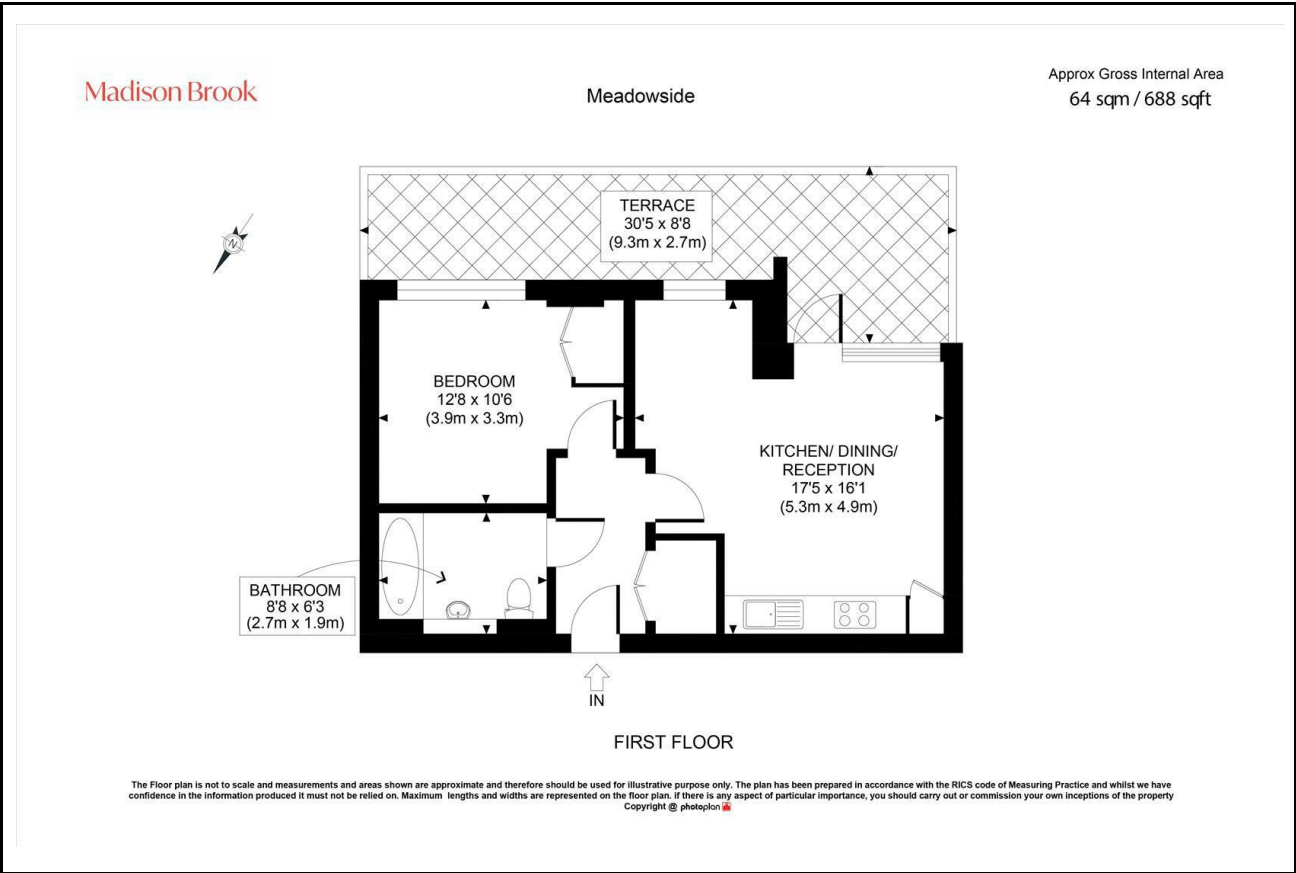
Madison Brook

## Property Summary

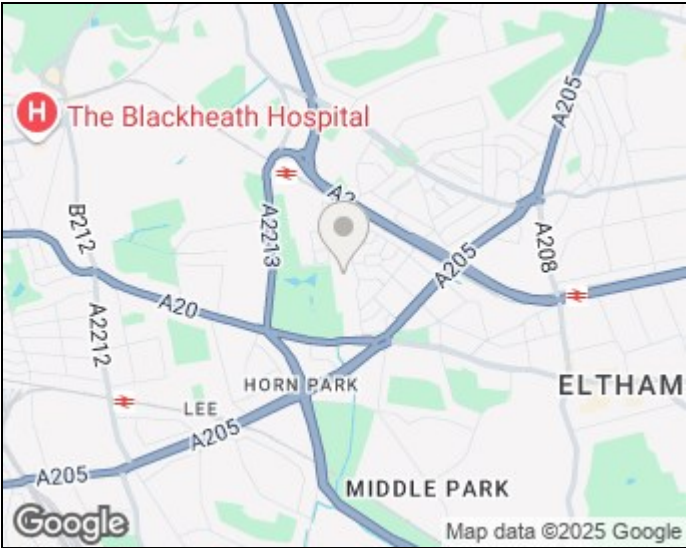
Located in the heart of Kidbrooke Village, this beautifully presented one-bedroom apartment sits on the first floor of Johnson Court and offers 491 sq ft of stylish internal space. The layout features a bright open-plan kitchen and living area with integrated appliances, a spacious double bedroom with fitted wardrobes, a modern bathroom, and two hallway storage cupboards.

Enjoy direct access to a private balcony, as well as gated parking. Residents benefit from a 24-hour concierge, gym facilities, and landscaped communal gardens. Kidbrooke Station is just a 7-minute walk, offering direct routes to London Bridge, Cannon Street, and Victoria.

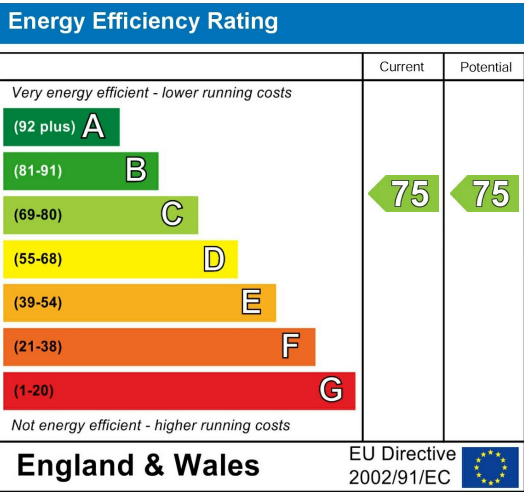
## Floorplan



## Area Map



## Energy Efficiency Graph



These particulars, whilst believed to be accurate are set out as a general outline only for guidance and do not constitute any part of an offer or contract. Intending purchasers should not rely on them as statements of representation of fact, but must satisfy themselves by inspection or otherwise as to their accuracy. No person in this firm's employment has the authority to make or give any representation or warranty in respect of the property.

43 Loampit Vale, Lewisham, London, SE13 7FT  
Tel: 020 3946 6200 Email:  
lewisham@madisonbrook.com  
<https://madisonbrook.com/>