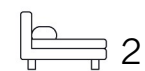




Living  
made  
better

Venice Corte  
Lewisham, SE13 7FW



B

Offers In Excess Of £400,000



# Venice Corte, Lewisham, SE13 7FW

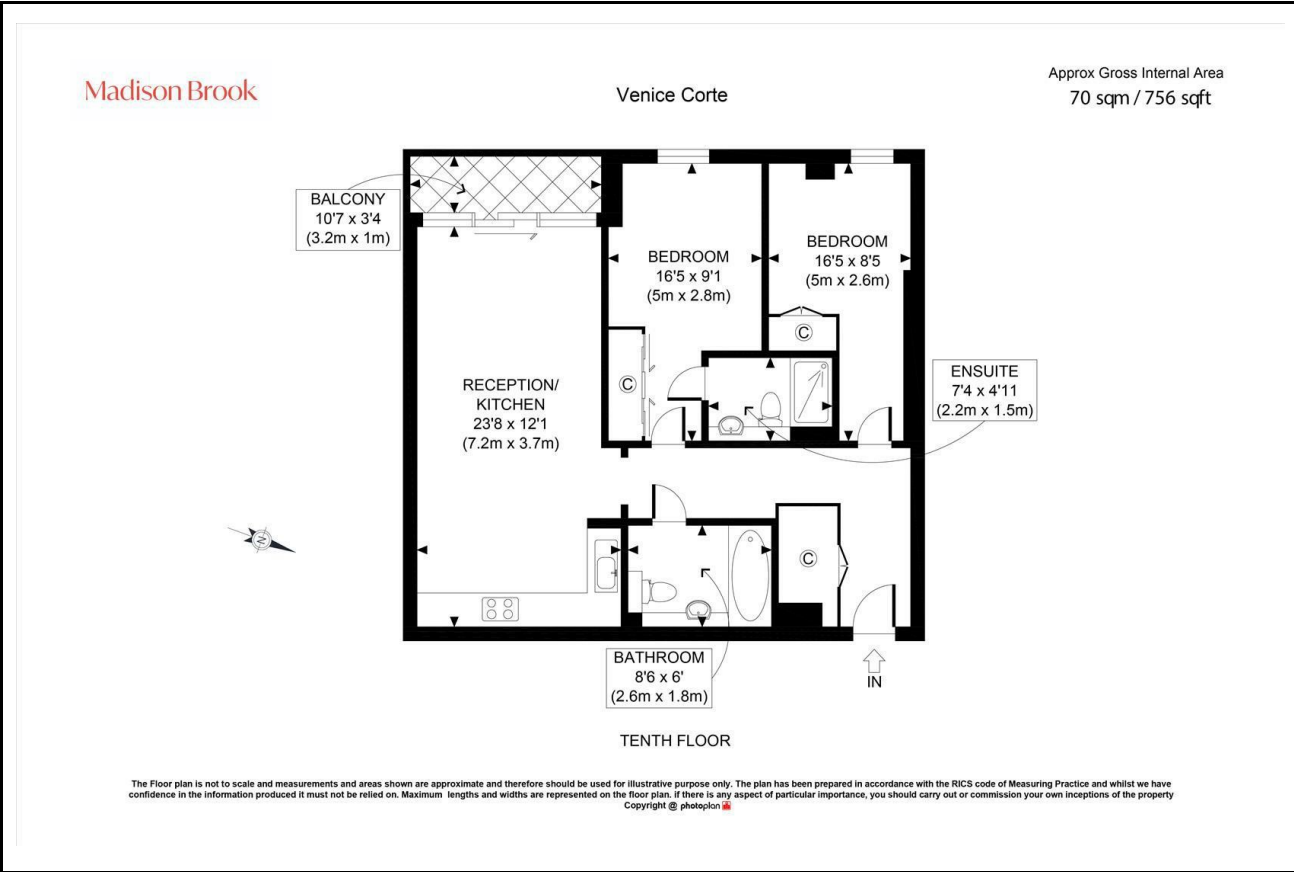
Madison Brook

## Property Summary

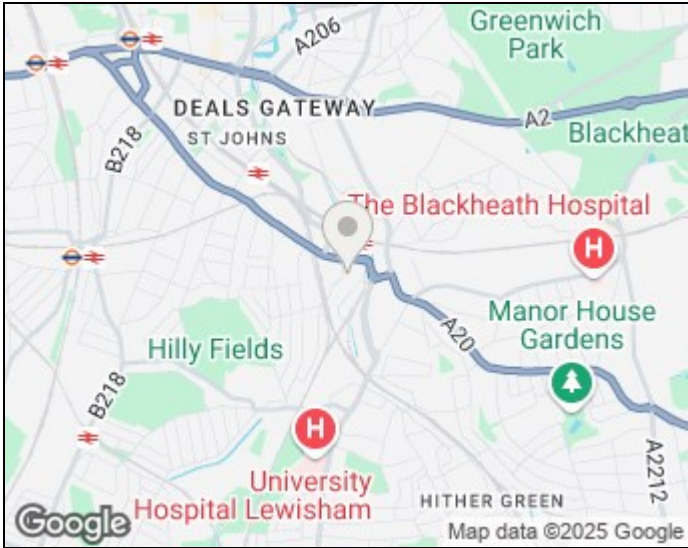
A stylish two-bedroom, two-bathroom apartment set on the 10th floor of the sought-after Venice Corte development in Lewisham. Offering 756 sq. ft. of internal space, the property features a bright open-plan kitchen/reception with floor-to-ceiling windows, private balcony, two double bedrooms with built-in wardrobes, and two modern bathrooms (including an en-suite). Laminate flooring runs throughout, enhancing the contemporary feel.

Residents benefit from a 24-hour concierge and access to communal gardens. Just 0.2 miles from Lewisham Station (DLR & National Rail), with easy access to Greenwich Park and Blackheath Village. Leasehold with 112 years remaining. Offered chain free.

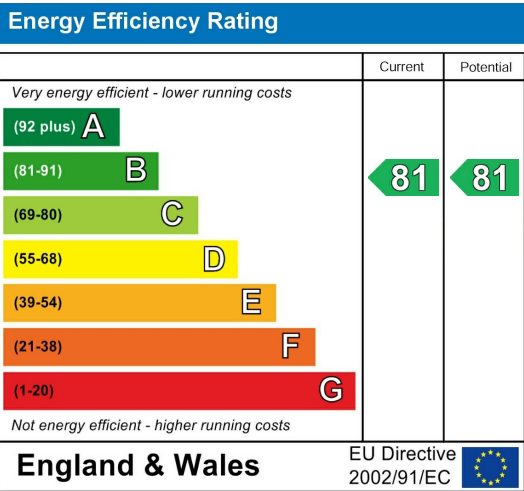
## Floorplan



## Area Map



## Energy Efficiency Graph



These particulars, whilst believed to be accurate are set out as a general outline only for guidance and do not constitute any part of an offer or contract. Intending purchasers should not rely on them as statements of representation of fact, but must satisfy themselves by inspection or otherwise as to their accuracy. No person in this firm's employment has the authority to make or give any representation or warranty in respect of the property.

43 Loampit Vale, Lewisham, London, SE13 7FT  
Tel: 020 3946 6200 Email:  
lewisham@madisonbrook.com  
<https://madisonbrook.com/>