

Living
made
better

Torre Vista
Lewisham, SE13 7FT



£1,950 PCM

Torre Vista, Lewisham, SE13 7FT

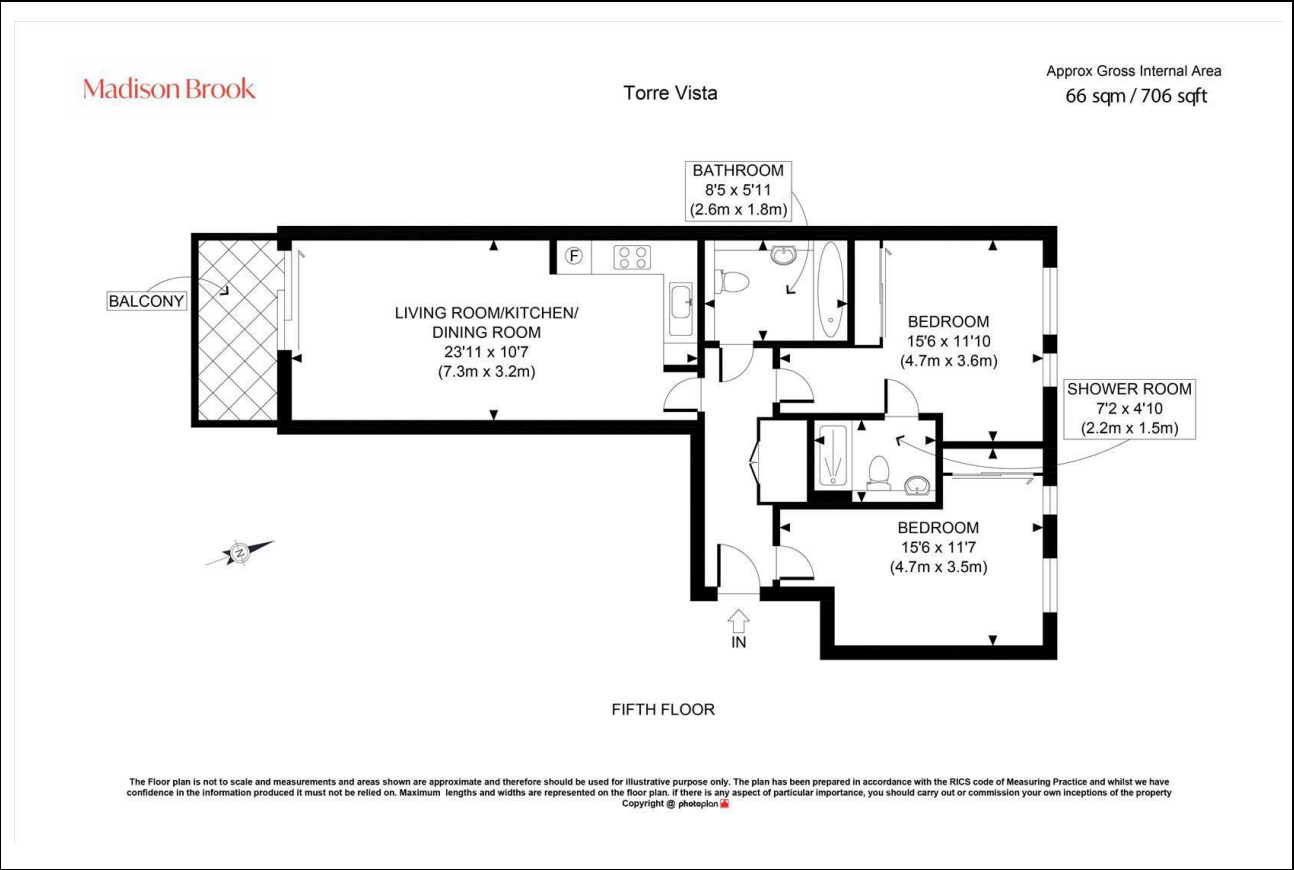
Madison Brook

Property Summary

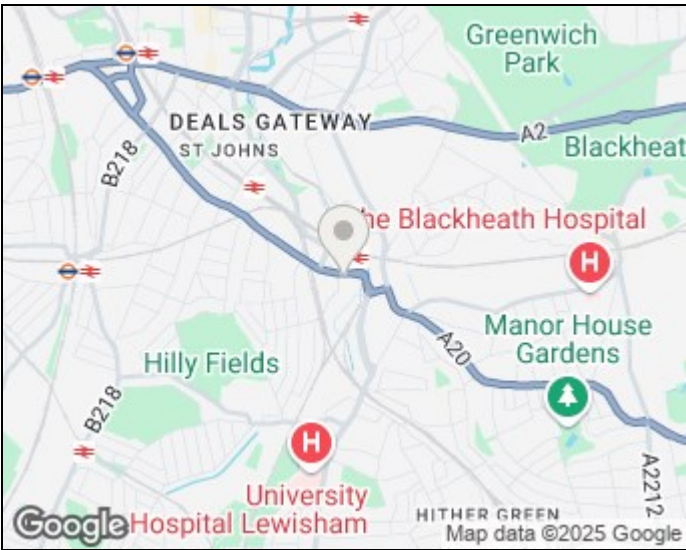
A superb two-bedroom, two-bathroom apartment in the popular Renaissance Development, Lewisham. Positioned on the fifth floor, this 701 sq. ft. flat offers a bright open-plan living area with a private south-facing balcony, fully integrated kitchen, principal bedroom with en-suite, a second double bedroom, and a family bathroom.

Residents benefit from a 24-hour concierge service and excellent transport links via Lewisham DLR and train stations, just a three-minute walk away.

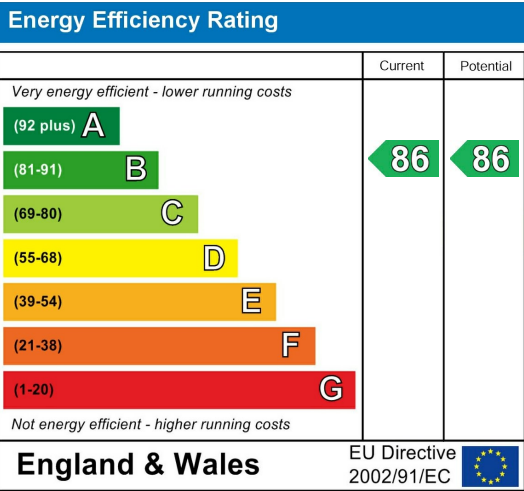
Floorplan



Area Map



Energy Efficiency Graph



These particulars, whilst believed to be accurate are set out as a general outline only for guidance and do not constitute any part of an offer or contract. Intending purchasers should not rely on them as statements of representation of fact, but must satisfy themselves by inspection or otherwise as to their accuracy. No person in this firms employment has the authority to make or give any representation or warranty in respect of the property.

43 Loampit Vale, Lewisham, London, SE13 7FT
Tel: 020 3946 6200 Email:
lewisham@madisonbrook.com
<https://madisonbrook.com/>