

Living
made
better

Baquba Building
Lewisham, SE13 7FF



Offers In Excess Of £260,000

Baquba Building, Lewisham, SE13 7FF

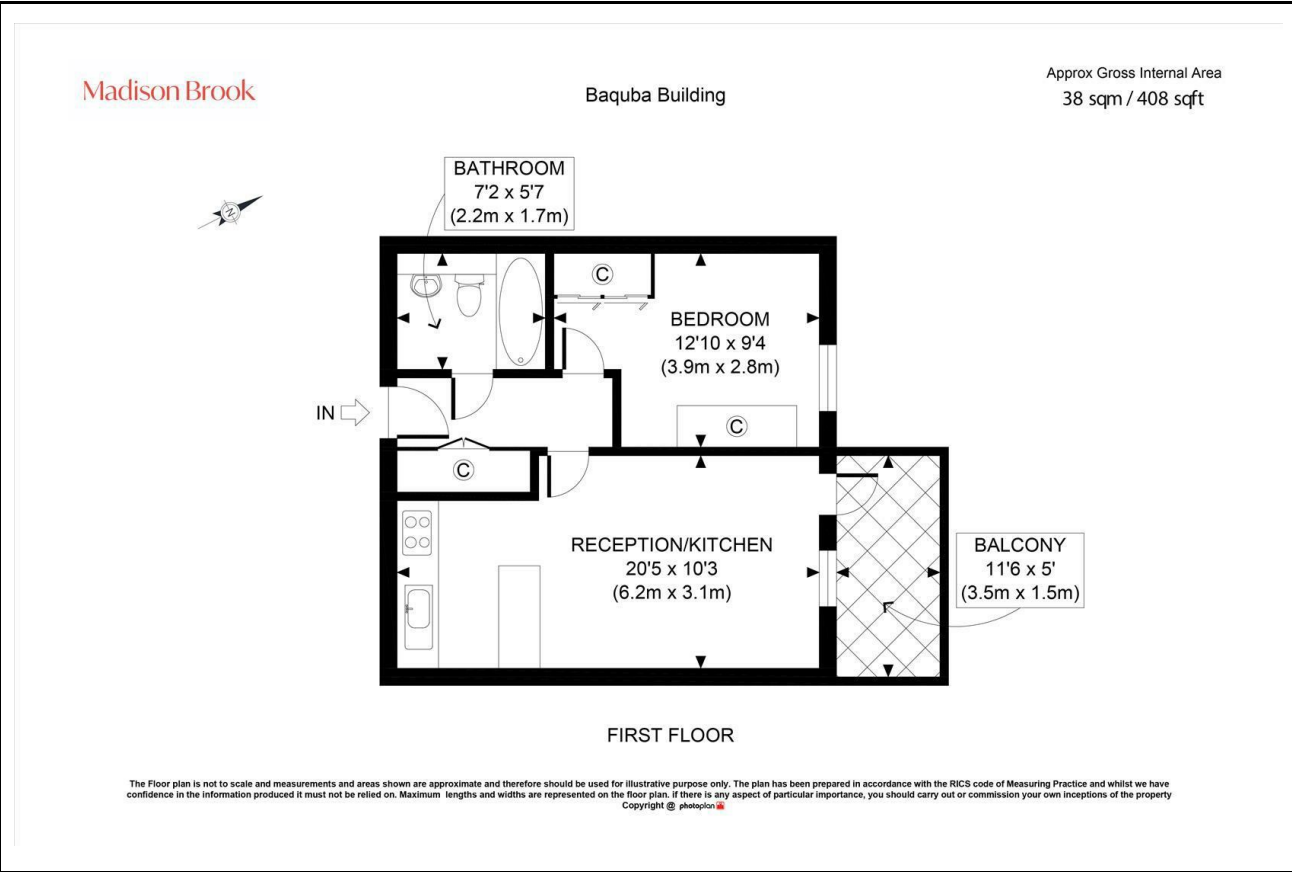
Madison Brook

Property Summary

A smart and well-located one-bedroom apartment on the first floor of the Baquba Building, Lewisham. This bright home features a spacious open-plan living area, modern kitchen, and private balcony, with wooden flooring throughout the living space and carpet in the bedroom.

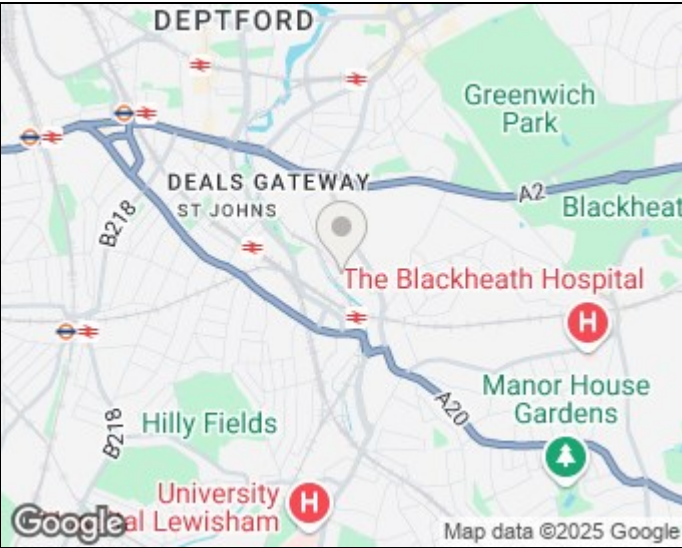
The double bedroom has a built-in wardrobe, and the stylish three-piece bathroom includes built-in storage. Residents benefit from a 24-hour concierge, residents' gym, and long lease of 984 years. Just 0.3 miles from Lewisham Station.

Floorplan

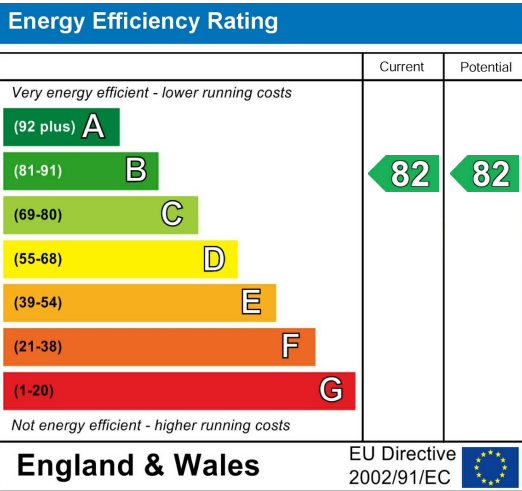


These particulars, whilst believed to be accurate are set out as a general outline only for guidance and do not constitute any part of an offer or contract. Intending purchasers should not rely on them as statements of representation of fact, but must satisfy themselves by inspection or otherwise as to their accuracy. No person in this firms employment has the authority to make or give any representation or warranty in respect of the property.

Area Map



Energy Efficiency Graph



43 Loampit Vale, Lewisham, London, SE13 7FT
Tel: 020 3946 6200 Email: lewisham@madisonbrook.com
<https://madisonbrook.com/>