



Living
made
better

Wallace Court
Kidbrooke Village, SE3 9EE



£1,750 PCM

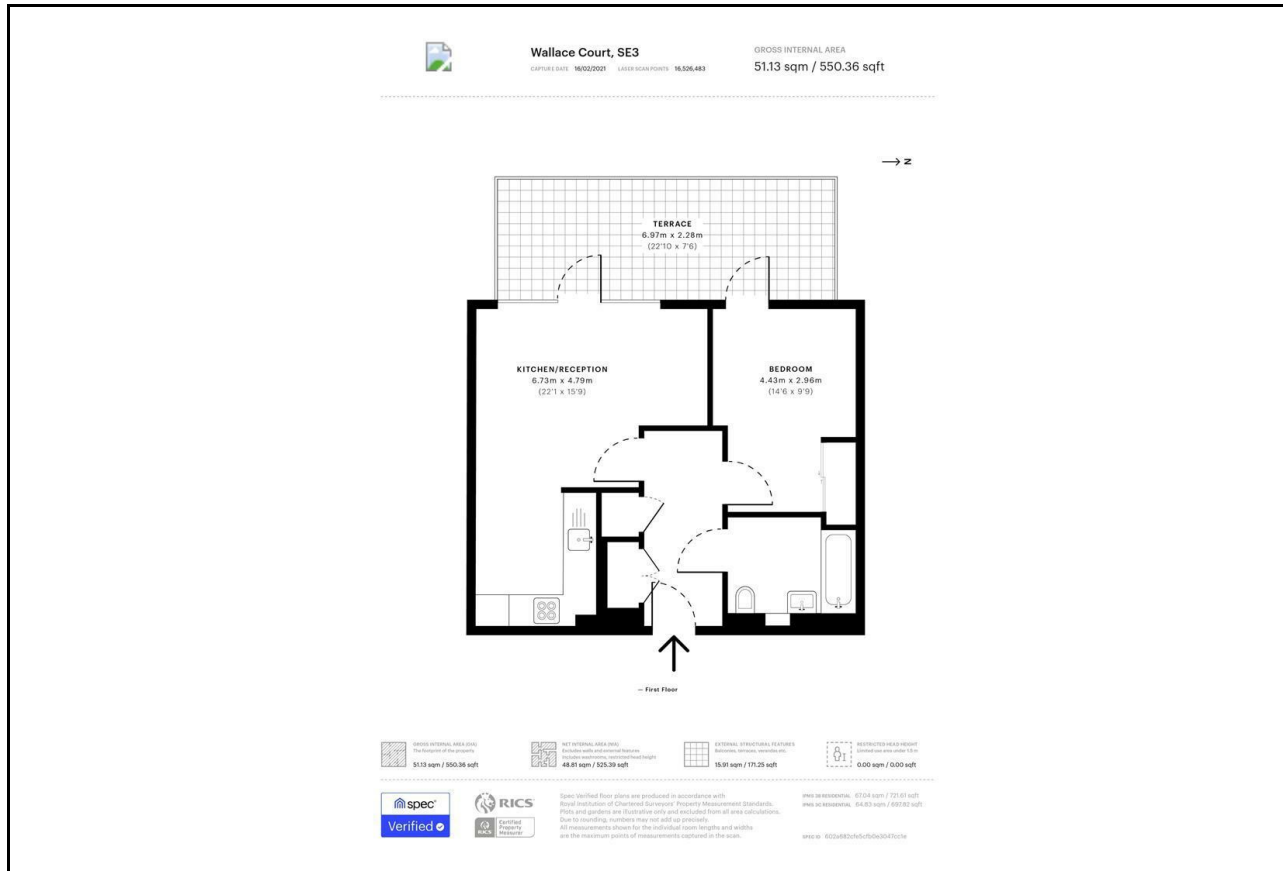
Wallace Court, Kidbrooke Village, SE3 9EE

Madison Brook

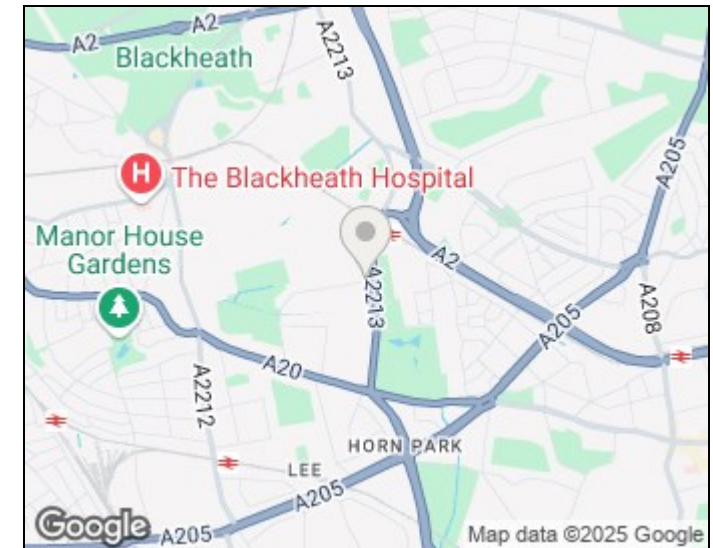
Property Summary

This immaculate one-bedroom apartment is located within the highly desirable Kidbrooke Village development. Offering approx. 550 sq ft of living space, the apartment features a spacious open-plan kitchen/reception with Siemens appliances and direct access to a private terrace. The bedroom is well-proportioned with built-in storage, and the bathroom is sleek and modern. Perfectly positioned just a 7-minute walk from Kidbrooke Station, the location offers fantastic transport links into central London.

Floorplan



Area Map



Energy Efficiency Graph

Energy Efficiency Rating		
	Current	Potential
<p><i>Very energy efficient - lower running costs</i></p> <p>(92 plus) A</p> <p>(81-91) B</p> <p>(69-80) C</p> <p>(55-68) D</p> <p>(39-54) E</p> <p>(21-38) F</p> <p>(1-20) G</p> <p><i>Not energy efficient - higher running costs</i></p>	83	83
<p>England & Wales</p> <p>EU Directive 2002/91/EC</p>		

These particulars, whilst believed to be accurate are set out as a general outline only for guidance and do not constitute any part of an offer or contract. Intending purchasers should not rely on them as statements of representation of fact, but must satisfy themselves by inspection or otherwise as to their accuracy. No person in this firm's employment has the authority to make or give any representation or warranty in respect of the property.

43 Loampit Vale, Lewisham, London, SE13 7FT

Tel: 020 3946 6200 Email:

lewisham@madisonbrook.com

<https://madisonbrook.com/>