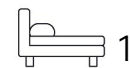




Living
made
better

Roma Corte
Lewisham, SE13 7GP



£1,650 PCM

Roma Corte, Lewisham, SE13 7GP

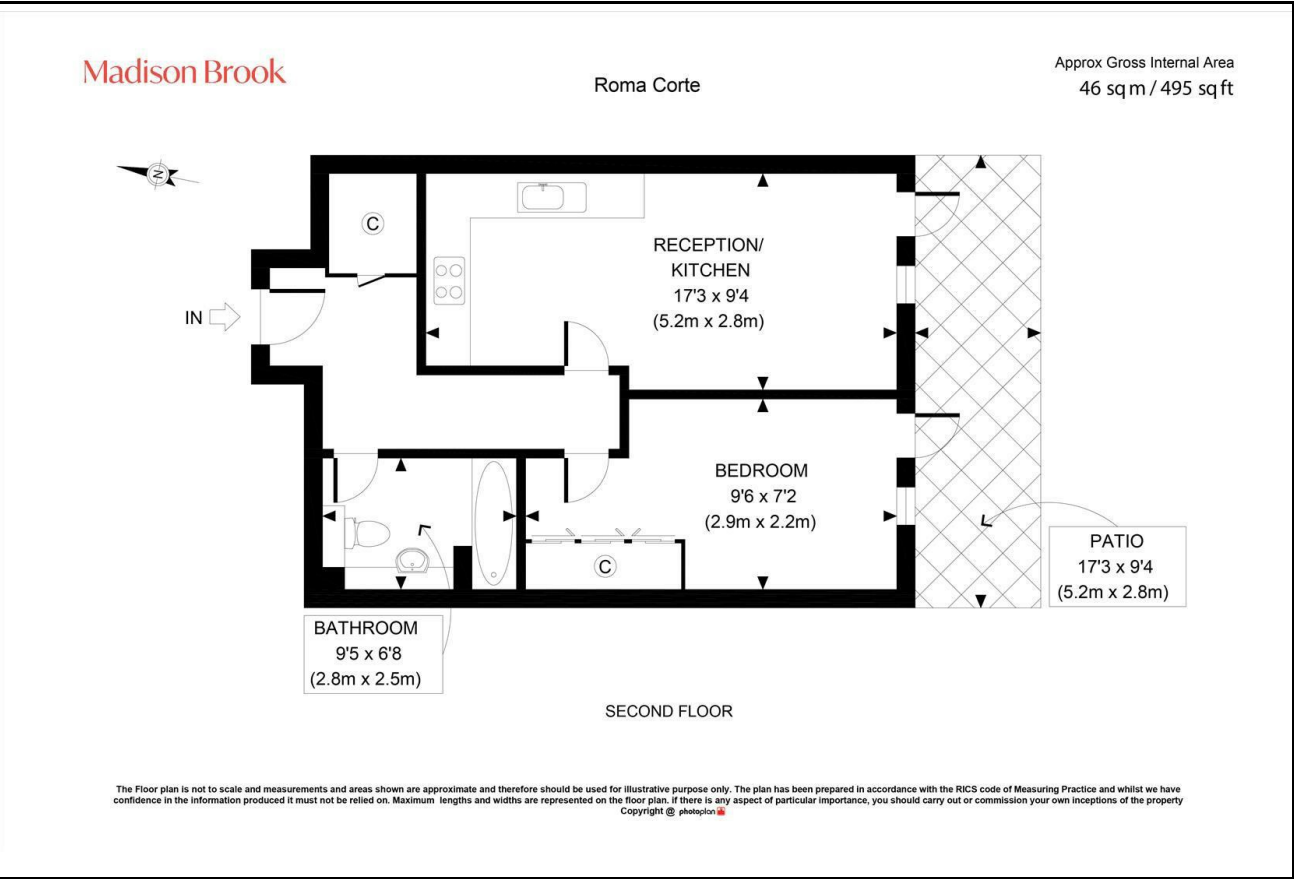
Madison Brook

Property Summary

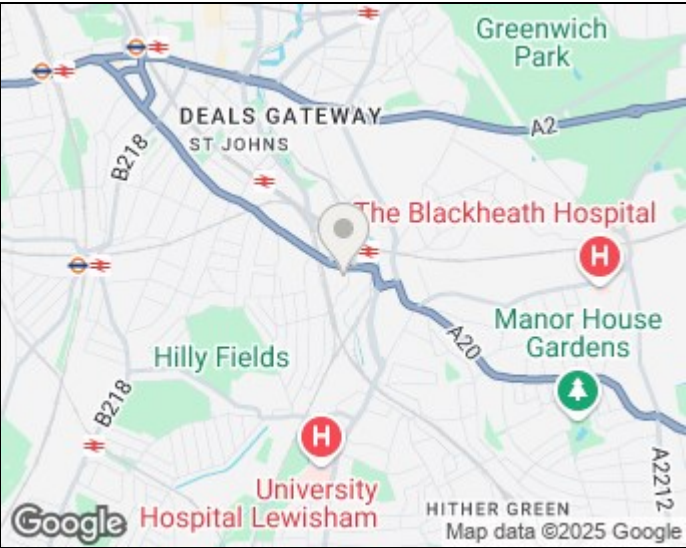
This well-presented one-bedroom apartment is located in the highly sought-after Renaissance development, right in the heart of Lewisham. Set on the second floor and spanning almost 500 sq. ft., the property offers a spacious open-plan living area with a fully integrated kitchen, modern fittings, and access to a private terrace.

The apartment is part furnished and further benefits from a 24-hour concierge, a communal roof terrace, and secure entry. Located just moments from Lewisham DLR and rail station, with fast access to London Bridge, Waterloo, Canary Wharf and beyond.

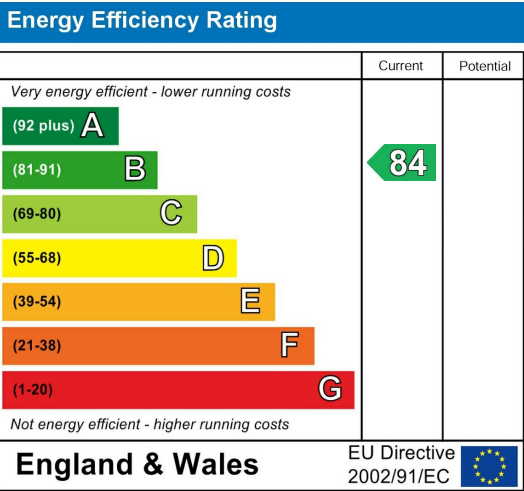
Floorplan



Area Map



Energy Efficiency Graph



These particulars, whilst believed to be accurate are set out as a general outline only for guidance and do not constitute any part of an offer or contract. Intending purchasers should not rely on them as statements of representation of fact, but must satisfy themselves by inspection or otherwise as to their accuracy. No person in this firm's employment has the authority to make or give any representation or warranty in respect of the property.

43 Loampit Vale, Lewisham, London, SE13 7FT
Tel: 020 3946 6200 Email:
lewisham@madisonbrook.com
<https://madisonbrook.com/>