



Living
made
better

Meadowside
London, SE9 6BS

 3  2  1  C
Offers In The Region Of £450,000

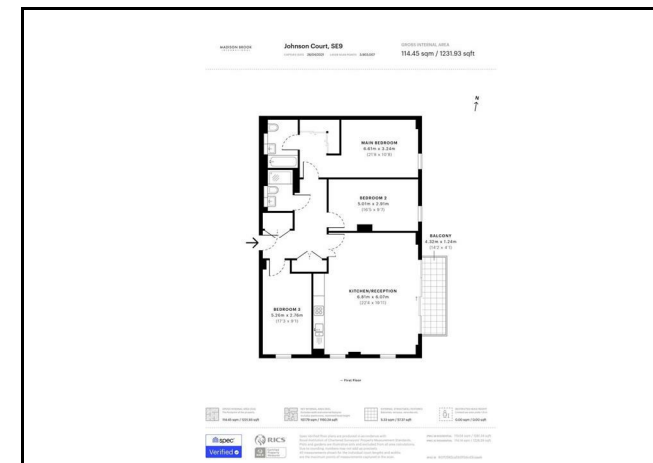
Meadowside, London SE9 6BS

This stunning three bedroom apartment is located on the first floor of Johnson Court, forming part of Kidbrooke Village.

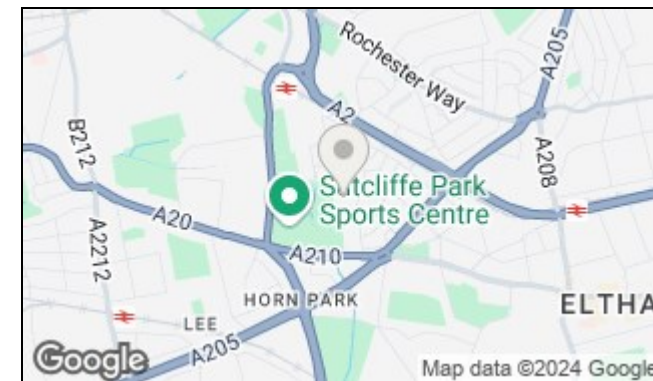
Offering over 1,200 Sq. Ft of internal space, the property comprises of a generously sized living area and a stylish, open plan kitchen equipped with a range of integrated appliances. A spacious principal bedroom providing access to a chic en-suite and built wardrobes along with two additional well proportioned bedrooms, a further chic family bathroom suite and access to a private balcony. The property also comes with the right to park on site.

Residents can enjoy the use of a 24 hour concierge, resident gymnasium and a short walk to Kidbrooke Station providing easy access London for the commuter.

Floorplan



Area Map



These particulars, whilst believed to be accurate are set out as a general outline only for guidance and do not constitute any part of an offer or contract. Intending purchasers should not rely on them as statements of representation of fact, but must satisfy themselves by inspection or otherwise as to their accuracy. No person in this firm's employment has the authority to make or give any representation or warranty in respect of the property.

43 Loampit Vale, Lewisham, London, SE13 7FT
 Tel: 020 3946 6200 Email: lewisham@madisonbrook.com <https://madisonbrook.com/>

Energy Efficiency Graph

