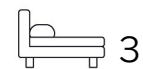




Living
made
better

Johnson Court
Kidbrooke, SE9 6BS



Offers In The Region Of £450,000

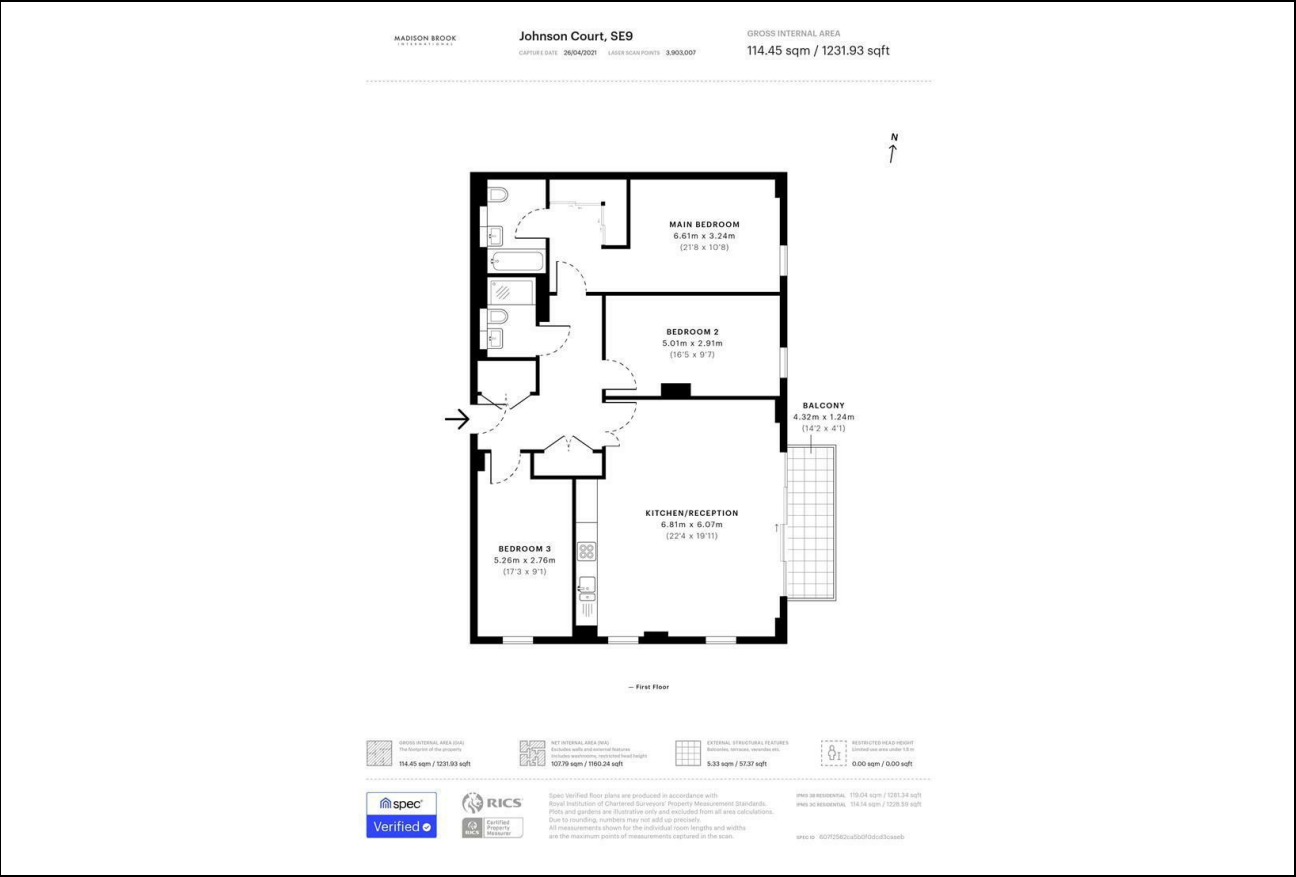
Johnson Court, Kidbrooke, SE9 6BS

Madison Brook

Property Summary

Add text here

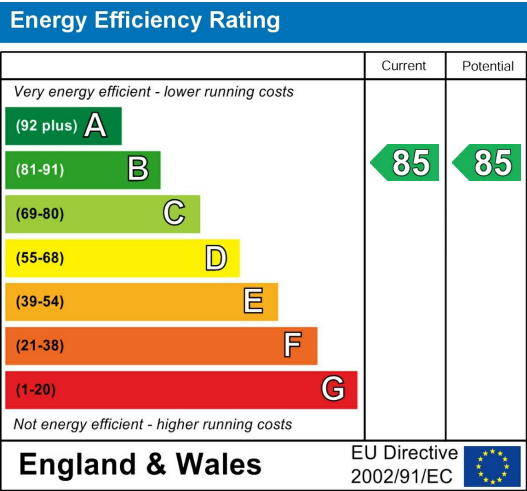
Floorplan



Area Map



Energy Efficiency Graph



These particulars, whilst believed to be accurate are set out as a general outline only for guidance and do not constitute any part of an offer or contract. Intending purchasers should not rely on them as statements of representation of fact, but must satisfy themselves by inspection or otherwise as to their accuracy. No person in this firms employment has the authority to make or give any representation or warranty in respect of the property.

43 Loampit Vale, Lewisham, London, SE13 7FT
Tel: 020 3946 6200 Email: lewisham@madisonbrook.com
<https://madisonbrook.com/>