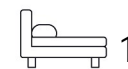




Living
made
better

20 Victoria Parade
London, SE10 9FJ



£2,000 PCM

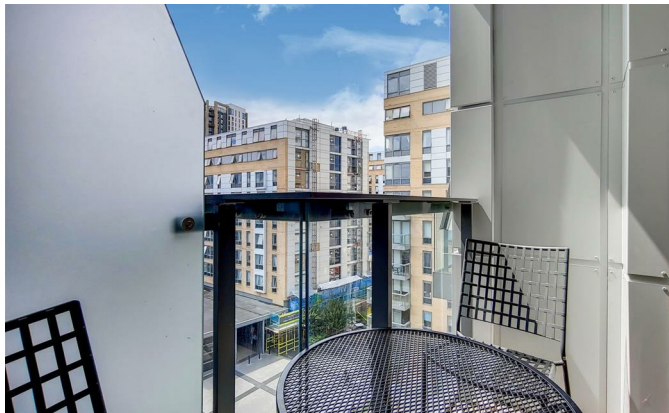
20 Victoria Parade, London SE10 9FJ

Madison Brook

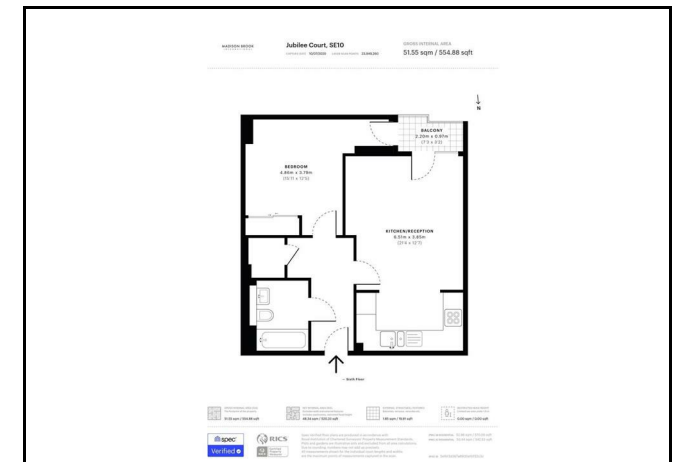
This outstanding one bedroom apartment is located on the sixth floor of Jubilee Court. The apartment offers 554 Sq. Ft. of internal living space, is immaculately presented throughout & available fully furnished.

The apartment boasts a light, spacious living area including an open plan, fully fitted kitchen with a range of integrated appliances; a master bedroom with built in wardrobe space as well as a modern family bathroom & ample built in storage to the hallway.

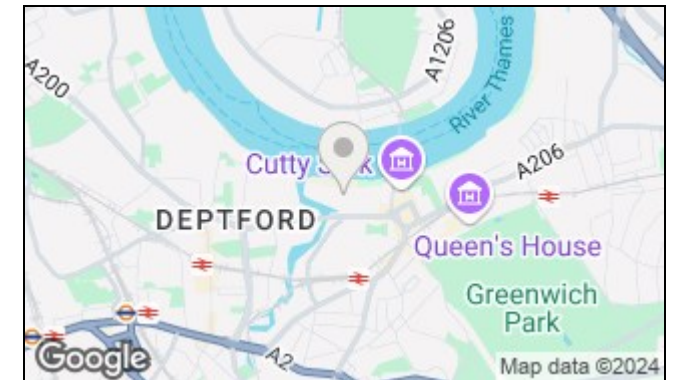
Ideally situated within the New Capital Quay Development, you also benefit from a number of onsite facilities including the 24 Hour Concierge Service, Waitrose & Costa Coffee. The development is also conveniently located for commuting into Canary Wharf and the City. Local stations include Cutty Sark (DLR) & Greenwich (DLR & South Eastern).



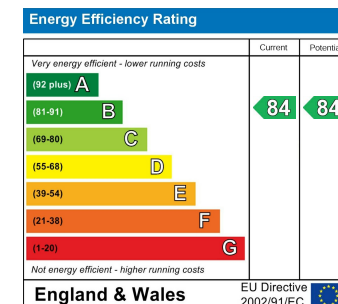
Floorplan



Area Map



Energy Efficiency Graph



43 Loampit Vale, Lewisham, London, SE13 7FT

Tel: 020 3946 6200 Email: lewisham@madisonbrook.com <https://madisonbrook.com/>