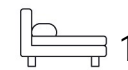




Living
made
better

62 Granville Park
London, SE13 7DX



£1,500 Per Month

62 Granville Park, London SE13 7DX

Madison Brook

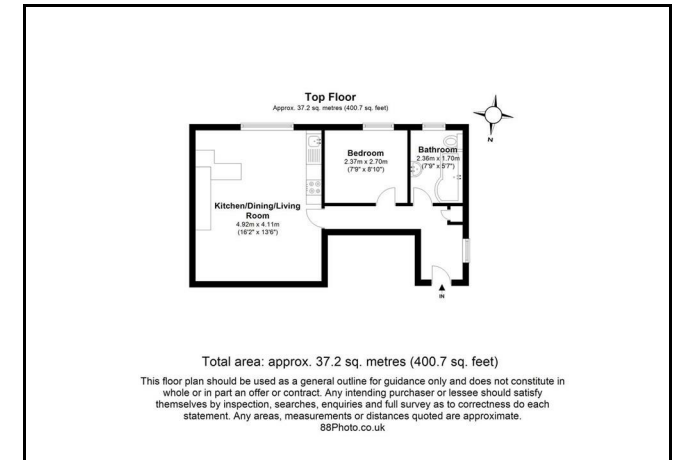
New to the market, this well presented one bedroom apartment in a converted house located in Lewisham. Perfectly situated within walking distance to Lewisham Centre and a short walk to the DLR and Train/Bus stations.

The flat comprises of over 400 sq. ft of internal space. Within the property, the living room is open plan with fully equipped kitchen, bedroom and fitted modern bathroom suite.

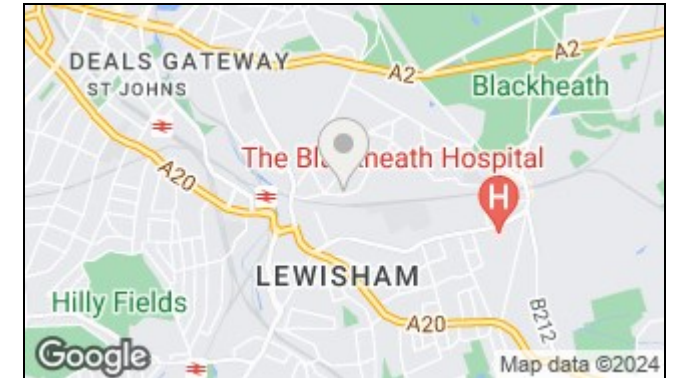
The property is offered part furnished and will be available from 25th September.



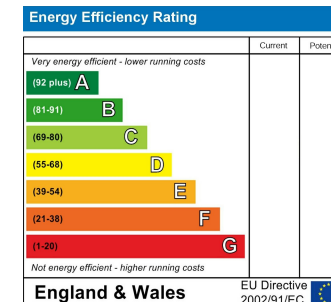
Floorplan



Area Map



Energy Efficiency Graph



43 Loampit Vale, Lewisham, London, SE13 7FT

Tel: 020 3946 6200 Email: lewisham@madisonbrook.com <https://madisonbrook.com/>

These particulars, whilst believed to be accurate are set out as a general outline only for guidance and do not constitute any part of an offer or contract. Intending purchasers should not rely on them as statements of representation of fact, but must satisfy themselves by inspection or otherwise as to their accuracy. No person in this firm's employment has the authority to make or give any representation or warranty in respect of the property.