



72-78 Conington Road
Lewisham, London, SE13 7FF

£1,650



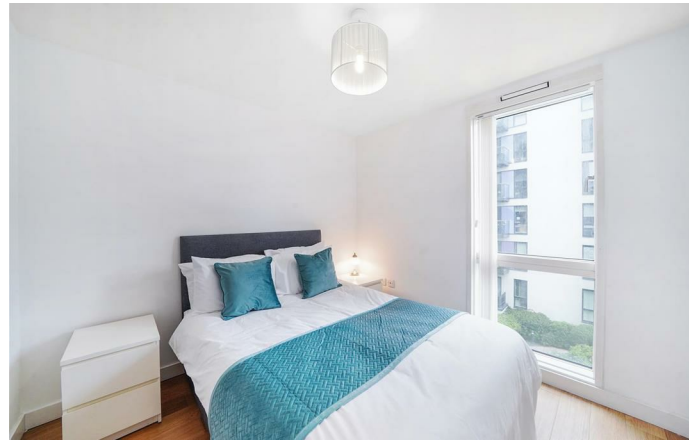
MADISON BROOK
INTERNATIONAL

72-78 Conington Road, Lewisham, London, SE13 7FF

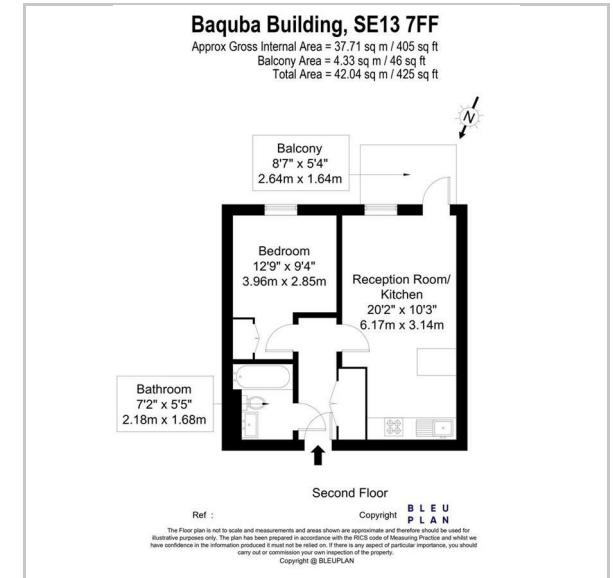
This beautiful one bedroom apartment is located in the Baquba Building on the second floor, forming part of the stunning Silkworks Development.

Boasting around 420 Sq. Ft. of internal living space, you have a nicely proportioned living space, with open plan kitchen and integrated appliances, double bedroom with fitted wardrobe and a spacious chic three piece bathroom.

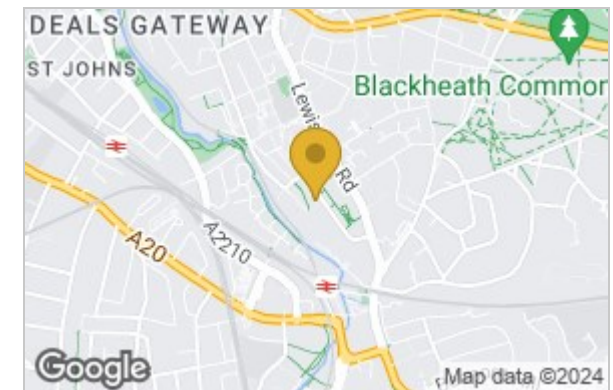
The apartment is located in a great spot for commuters, being only a short walk from either Elverson Road DLR or Lewisham Station, as well having easy access to the A20 offering roads into Central London & beyond. On top of this you are a moments from the busy Lewisham High Street offering a vast amount of restaurants, cafes and the famous Lewisham Open Market.



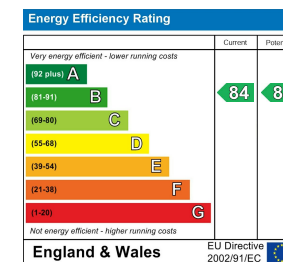
Floor Plan



Area Map



Energy Efficiency Graph



These particulars, whilst believed to be accurate are set out as a general outline only for guidance and do not constitute any part of an offer or contract. Intending purchasers should not rely on them as statements of representation of fact, but must satisfy themselves by inspection or otherwise as to their accuracy. No person in this firm's employment has the authority to make or give any representation or warranty in respect of the property.

43 Loampit Vale, Lewisham, London, SE13 7FT

Tel: 020 3946 6200 Email: lewisham@madisonbrook.com <https://madisonbrook.com/>