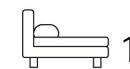




Living
made
better

15 Bessemer Place
London, SE10 0GQ



Offers In Excess Of £375,000

15 Bessemer Place, London SE10 0GQ

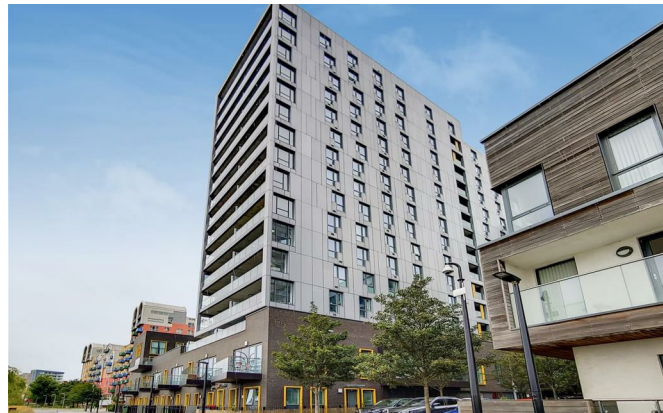
Madison Brook

This spacious one bedroom apartment is ideally located on the Greenwich Peninsula moments from the wealth of amenities in the O2 arena. Whilst the location is great, the development also benefits from access to the resident's gym and concierge service.

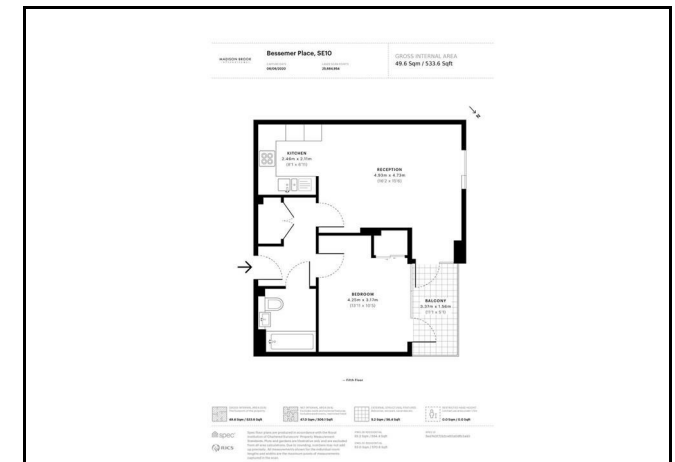
This 5th floor apartment boasts 537 sq. ft. and comprises of a wonderful living space with access to a good sized balcony, as well as a fully-fitted open-plan kitchen, a well-proportioned master bedroom and modern bathroom.

For commuters, North Greenwich Underground Station (Jubilee Line) is only 0.6 miles away, as well as the Emirates Cable Car making The City of London and beyond easily accessible.

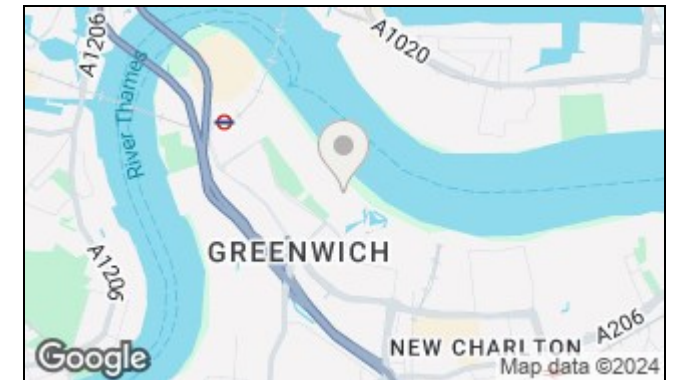
If you are looking for a Property For Sale in Greenwich Peninsula or North Greenwich and require further details, please do not hesitate to contact Madison Brook.



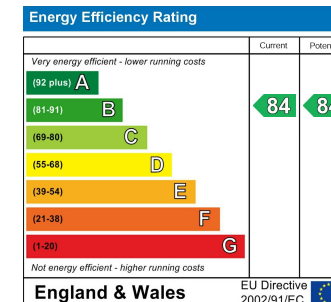
Floorplan



Area Map



Energy Efficiency Graph



43 Loampit Vale, Lewisham, London, SE13 7FT

Tel: 020 3946 6200 Email: lewisham@madisonbrook.com <https://madisonbrook.com/>