



1

Bedroom



1

Bathroom



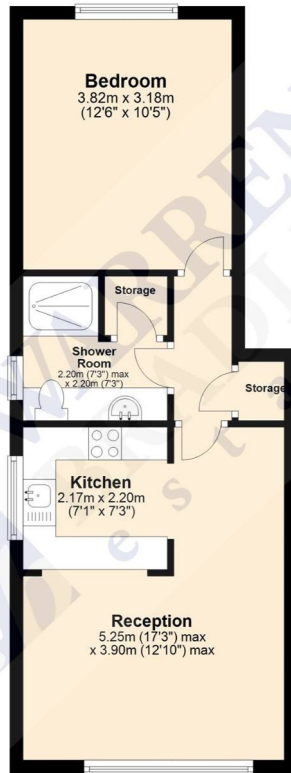
Warren Bradley Estates are delighted to offer for sale this purpose built one-bedroom apartment on the top floor (2nd floor) within a popular Edgware Development.

Neutrally decorated throughout the property benefits from a bright and spacious lounge which offers a partially open plan kitchen, a large double bedroom, tiled shower room, double glazing, electric heating, security intercom system and an allocated parking.

Within close proximity to local amenities such as shops, parks, and public transportation. The apartment is also just a short drive away from the M1 motorway and the A41, making it an ideal location for commuters.

Offered chain free the property is ideal for first time buyers or rental investors alike.

Pavilion Way
Approx. 40.8 sq. metres (438.9 sq. feet)



Total area: approx. 40.8 sq. metres (438.9 sq. feet)

Disclaimer: Please note this floor plan is for marketing purposes and is to be used as a guide only.
Plan produced using PlanUp.

Energy Efficiency Rating		Current	Potential
Very energy efficient - lower running costs			
(92+)	A		
(81-91)	B		
(69-80)	C	71	79
(55-68)	D		
(39-54)	E		
(21-38)	F		
(1-20)	G		
Not energy efficient - higher running costs			
England, Scotland & Wales		EU Directive 2002/91/EC	

Address: Pavilion Way, Edgware

