

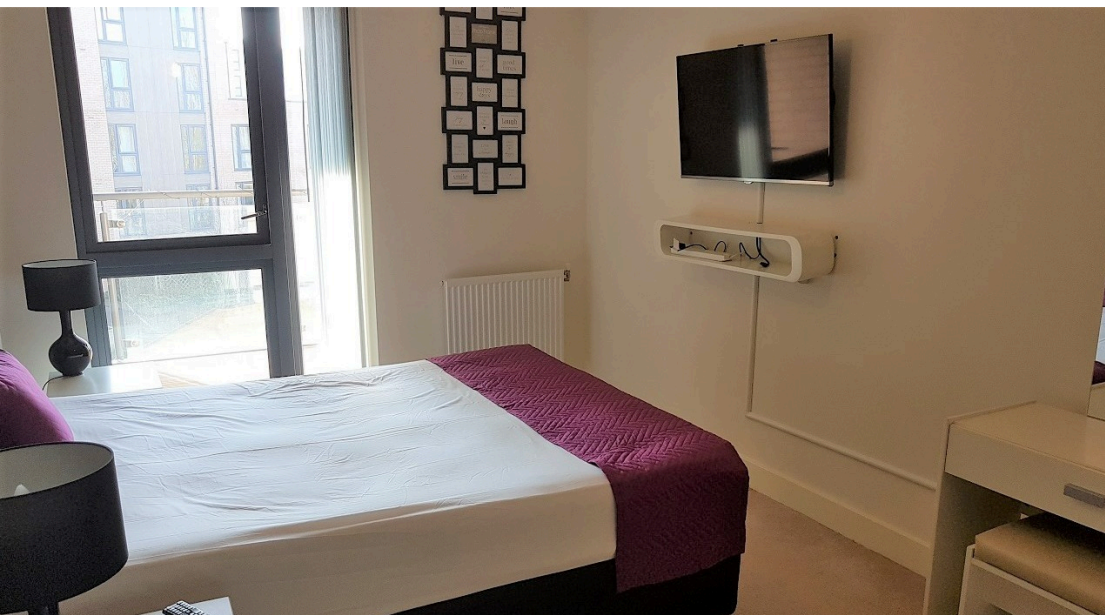


🛏 2

Bedrooms

🛁 1

Bathroom



We are pleased to offer for sale this two bedroom apartment located in the popular Pulse development. Offered in very good condition the property benefits from a large reception room, a fitted kitchen with integrated appliances, tiled bathroom and a huge balcony overlooking the communal gardens and parkland. The property also has an allocated parking space and is able to be sold fully furnished. Offered chain free or with an existing tenant the property is also a great investment opportunity.

Entrance Hall 4.29m x 1.30m (14.07ft x 4.27ft)

Living Room 4.40m x 4.20m (14.44ft x 13.78ft)

Kitchen 3.00m x 1.80m (9.84ft x 5.91ft)

Bedroom 1 4.70m x 2.80m (15.42ft x 9.19ft)

Bedroom 2 3.30m x 2.90m (10.83ft x 9.51ft)

Bathroom 2.60m x 1.80m (8.53ft x 5.91ft)

Balcony 10.30m x 2.20m (33.79ft x 7.22ft)

Parking

Allocated parking space in underground secure car park.

Leasehold

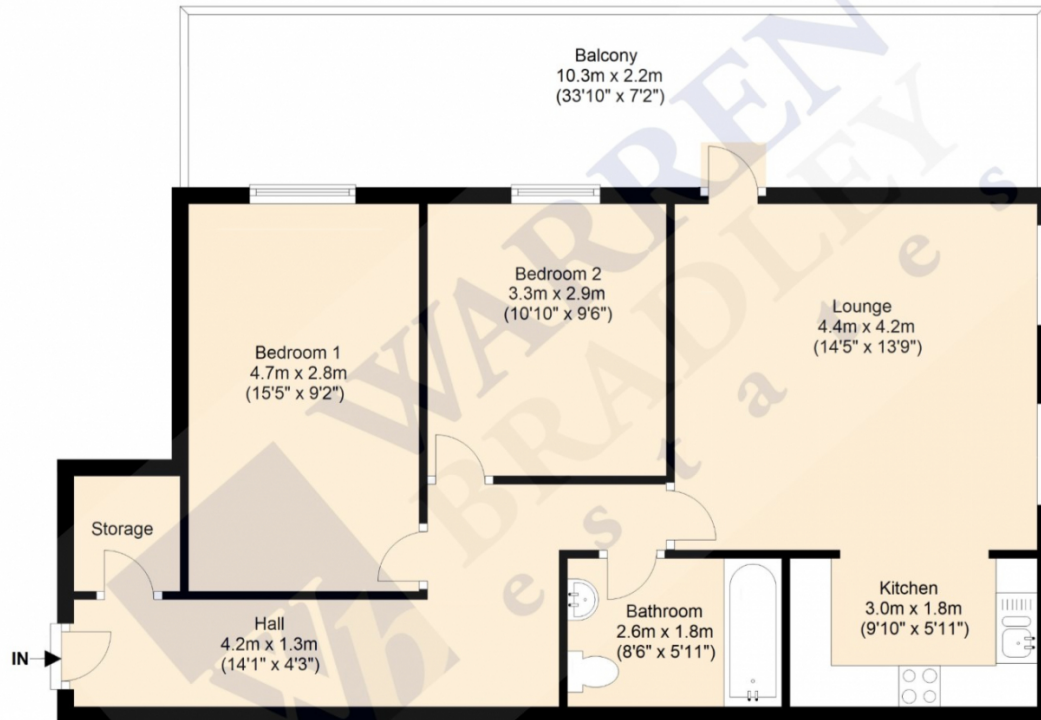
114 Years Remaining (125 Years from 2013) (As advised by the Vendor)

Service Charge

£2931.00 Per Annum (As advised by the Vendor)

Ground Rent

£360.00 Per Annum (As advised by the Vendor)



Total Area: Approx 66.7 Sq.Metres (718.2 Sq.Feet)

