



16 Hillview Drive, Clarkston

www.nicolestateagents.co.uk



Nicol Estate Agents



Nicol Estate Agents

Situation

Clarkston is acknowledged for its standard of local amenities and provides a selection of local shops, supermarkets, restaurants, regular bus and rail services to Glasgow City Centre, library and health care facilities.

Local sports and recreational facilities include David Lloyd Rouken Glen, Parklands Country Club, Cathcart, Williamwood and Whitecraigs Golf Clubs, several private bowling clubs and Clarkston & Giffnock tennis clubs, Rouken Glen Park, as well as East Renfrewshire Council's own excellent sports and leisure facilities at Eastwood Toll.

This popular suburb is located approximately 8 miles to the South of Glasgow's City Centre and is conveniently situated for commuter access to nearby M77/M8 & Glasgow Southern Orbital. Clarkston is considered one of the primary residential suburbs on the south side of Glasgow.

Hillview Drive is conveniently located for access to Clarkston Toll shops and amenities, The Avenue shopping centre and Waitrose at Greenlaw Village Retail Park in Newton Mearns. In addition, this property sits within the catchment area for the highly reputable Primary and Secondary schools, including Williamwood and St Ninian's High Schools.









Nicol Estate Agents

Property Description

Seldom available Extended three bedroom semi detached villa located within this sought after pocket of Clarkston, close to local amenities and excellent public transport links. Presented to the market for the First time in 60 years this property offers wonderful opportunity to redesign and upgrade a much loved family home.

The extended property provides flexible accommodation comprising:

Ground Floor: Reception hallway with staircase to side. Bay window sitting room which overlooks the front of the property with real flame gas fire at focal point, kitchen with a range of wall mounted and floor standing units and complementary worktop surfaces. Dining Area open plan to family room with patio doors to rear gardens, hall allowing access to downstairs shower room. There is excellent sub-floor/cellar providing additional storage

First Floor: Bay window double bedroom with open aspects to front. Bedroom two double with fitted wardrobes has wonderful views to rear towards the Kilpatrick hills Bedroom three to front House bathroom with three piece suite, stairwell to floored attic completes the accommodation.

The property is further complemented by gas central heating and double glazing. Gardens to front and rear of the property, A driveway to the side of the property provides off street parking.



www.nicolestateagents.co.uk



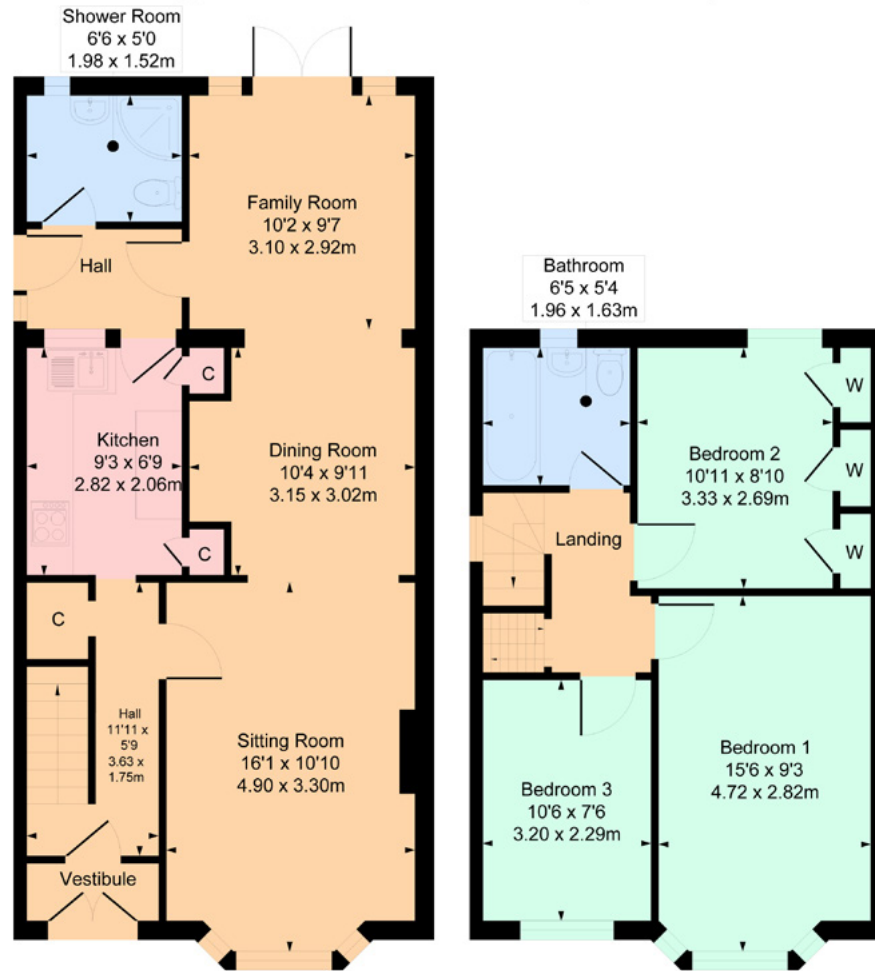






16 Hillview Drive, Clarkston

Approximate Gross Internal Area 1047 sq ft - 97.26 sq m



Ground Floor

First Floor

SKETCH PLAN FOR ILLUSTRATIVE PURPOSES ONLY All measurements, walls, doors, windows, fitting and appliances, their sizes and locations are approximate only. They cannot be regarded as being a representation by the seller, nor their agent. We believe these details to be accurate however it is not guaranteed and they do not form any part of a contract. Fixtures and fittings are not included unless specified in the enclosed. Photographs are for general information and it must not be inferred that any item is included for sale with the property.



Nicol Estate Agents

Viewing

By appointment through
Nicol Estate Agents
Newton Mearns

Outgoings

East Renfrewshire Council
Band E

Fixtures & Fittings

Only items specifically mentioned in the sale particulars are included in the sale price.

Energy Efficiency Rating

Band C

Services

The property will be supplied by mains water, gas and electricity. Gas central heating.

Local Authority

East Renfrewshire Council
Council headquarters
Eastwood Park
Rouken Glen Road
Giffnock G46 6UG
Tel: (0141) 577 3000

Property Reference

CLA 581