



SURREY PARK HOMES

... Selling a Lifestyle

111 WILLOW WALK

SURREY HILLS

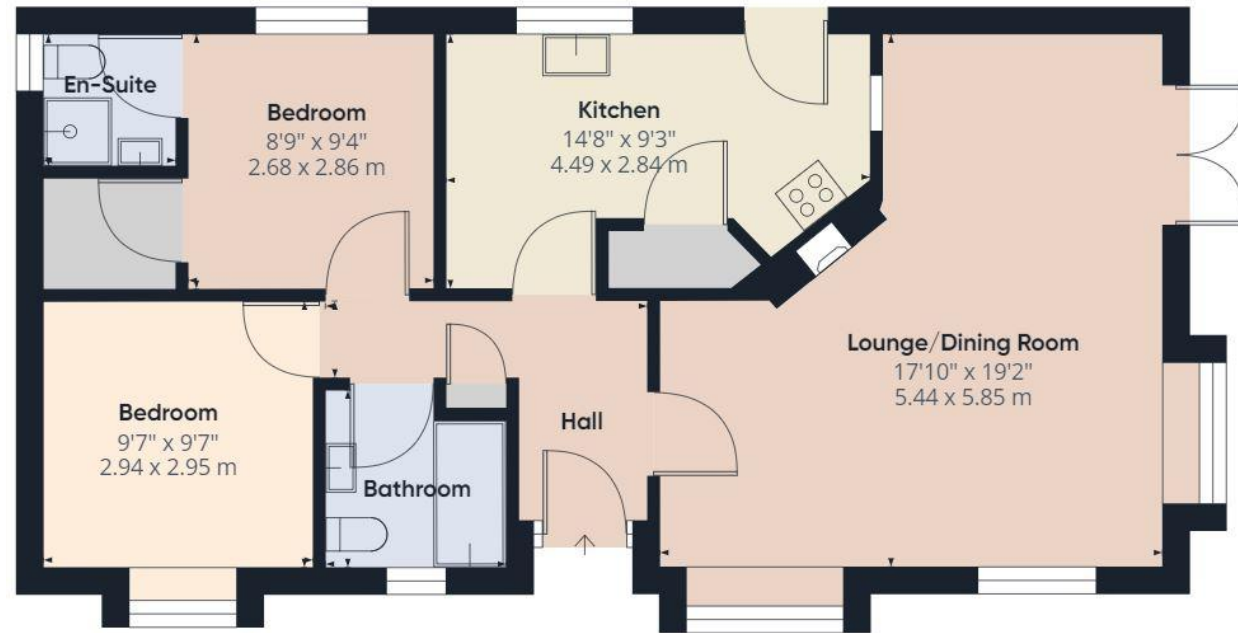
BOXHILL, KT20 7LZ

A double park home occupying a fabulous plot with a rear garden with a tranquil wooded backdrop and in a quiet setting within the popular Surrey Hills Park which welcomes families and pets.

The property which is presented in a vibrant colourful bohemian style includes an entrance hall with storage, lounge/dining room with access to a raised deck which overlooks the well-stocked secluded gardens, country kitchen, two double bedrooms, bathroom and en-suite shower room. The property has gas central heating and double glazing and has been recently externally insulated and re-clad.

Outside the property has its own driveway and front garden, and the pretty and secluded rear gardens include a summer house, two private decked area's and a pathway meandering to woodlands.

ASKING PRICE £335,000



Surrey Park Homes Regency House 61 Walton Street Walton On The Hill Surrey KT20 7RZ

Tel: 01737 338880

Email: sales@surreyparkhomes.com

Disclaimer: This plan is an illustration and is therefore for layout guidance only. Not drawn to scale, unless stated. Whilst every care is taken in the preparation of this plan, please check all dimensions and shapes before making any decisions reliant upon them.