



SURREY PARK HOMES

....*Selling a Lifestyle*

6, 11th Avenue

HOLLY LODGE, LOWER KINGSWOOD, KT20 6ST

Set in this attractive exceptionally well presented and very popular park a stunning brand new 'ready to move in' home built by Stately-Albion to their Mayfair design.

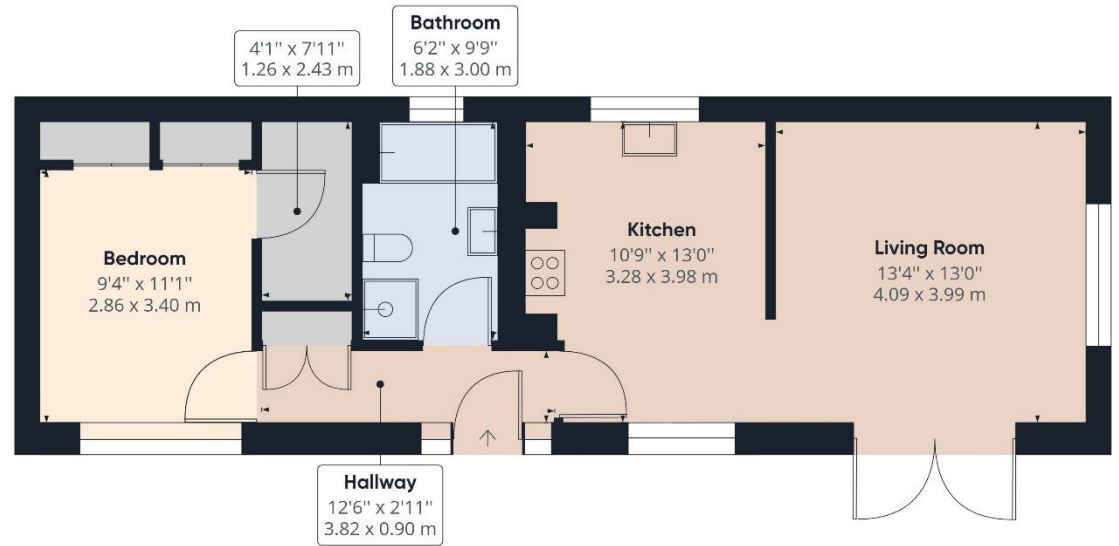
This spacious home is finished to a very high specification and features a large double aspect living room with full height window framed into a vaulted ceiling, a beautiful kitchen breakfast room complete with quartz worktops and quality appliances including a 'Rangemaster' cooker, a good size bedroom with fitted wardrobes and a walk in closet, and a luxurious bathroom with the added indulgence of a television set into the tiled walls.

The property comes furnished with the inclusion of two sofas and fireplace in the living room, a double bed, bathroom cabinet and storage unit and quality carpets, curtains and floor tiling throughout.

Outside, the surrounding gardens have been newly landscaped with parking for two cars available.

Holly Lodge is conveniently located midway between the local towns of Reigate and Banstead, with bus services directly adjacent to the entrance of the park and the open spaces of Walton Heath on the doorstep.

ASKING PRICE £285,000



Surrey Park Homes Regency House 61 Walton Street Walton on the Hill Surrey KT20 7RZ

Tel: 01737 338880 Email: sales@surreyparkhomes.com

Disclaimer: This plan is an illustration and is therefore for layout guidance only. Not drawn to scale, unless stated. Whilst every care is taken in the preparation of this plan, please check all dimensions and shapes before making any decisions reliant upon them.